

S19

Scenarios 19

Sassuolo, Italy

Il Futuro della Ceramica

The Ceramics Future

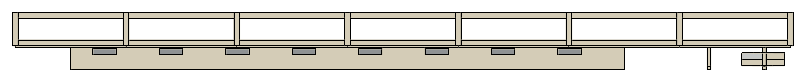
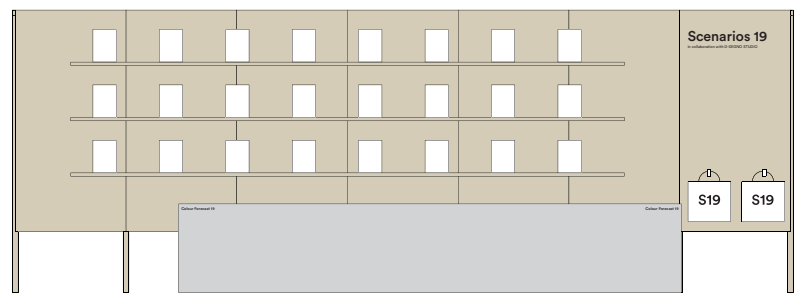
Tendenze
& Colori nell' Interior

Interior Trends
& Colours

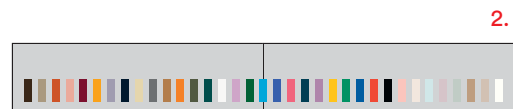
 GAMMA DUE

March-June
2019

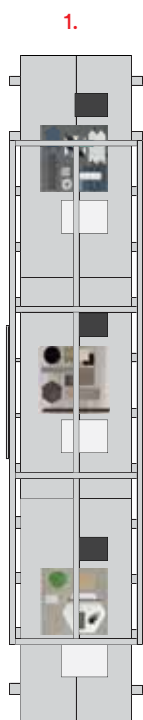
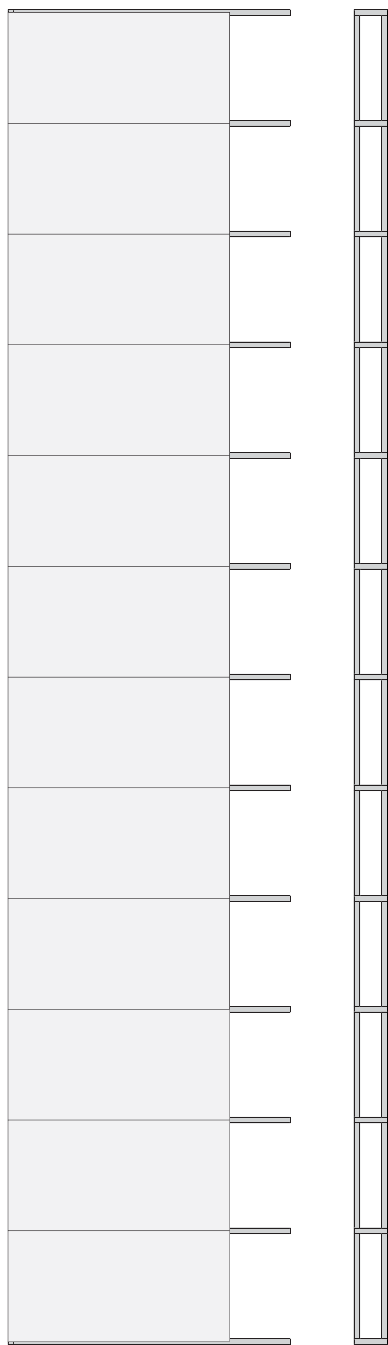
1. Moodboard
2. Colour Trends 2019
3. Volumes
4. Bespoke Slabs
5. Handcrafted Mosaics
6. Handcrafted Shapes



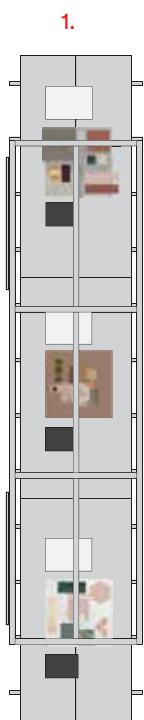
6.



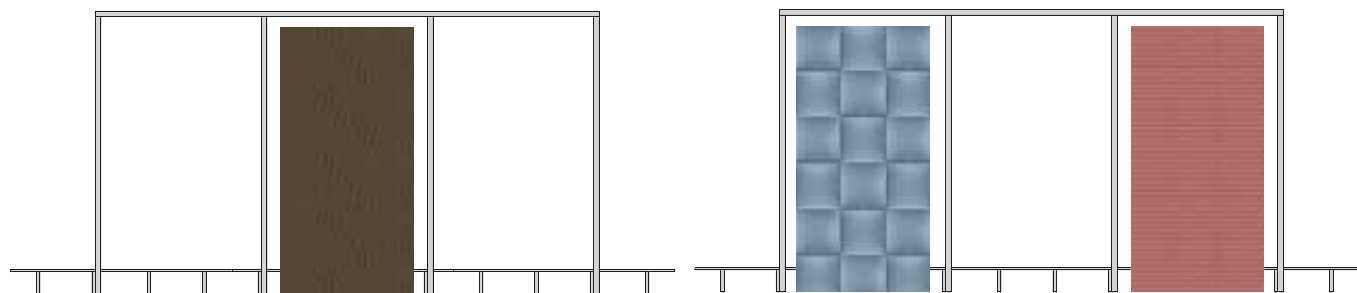
2.



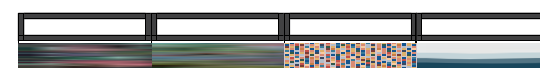
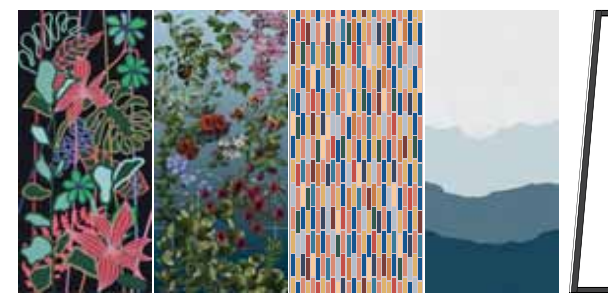
1.



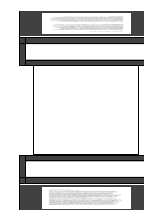
1.



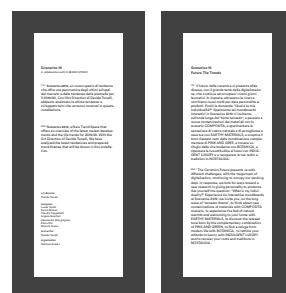
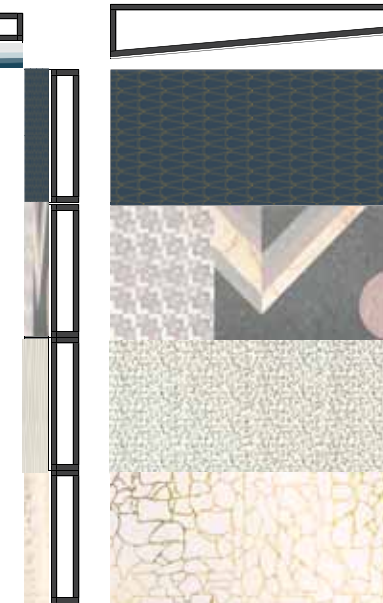
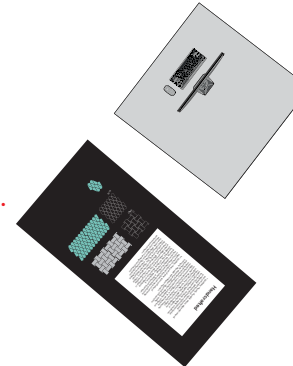
3.



4.



5.



LANDSCAPE	TEXTURE MATERIALS	PINK AND GREEN	SCENARIOS	WELLBEING LUXURY	WORLDWIDE
<p>Landscapes are a key element in interior design, providing a sense of connection to the outdoors. This section explores various landscape-inspired designs, from minimalist to lush and vibrant.</p>	<p>Texture materials are essential for creating depth and interest in a space. This section highlights a variety of textures, from natural fibers to synthetic materials, and how they can be used to create a rich, layered look.</p>	<p>Pink and green are two colors that have become increasingly popular in interior design. This section explores how these colors can be used together to create a fresh, vibrant, and sophisticated atmosphere.</p>	<p>Scenarios are a key element in interior design, providing a sense of connection to the outdoors. This section explores various scenario-inspired designs, from minimalist to lush and vibrant.</p>	<p>Wellbeing luxury is a new concept in interior design, focusing on creating spaces that promote health, happiness, and overall well-being. This section explores various ways to incorporate wellbeing into your interior design.</p>	<p>Worldwide is a collection of designs and materials inspired by different cultures and regions around the world. This section explores how these global influences can be used to create a unique and eclectic interior design.</p>

Indice

Introduzione / Introduction Storytelling Evento	8 9
Colour Trends 2019	10 11
COMPOSITA	12 17
EARTHY MATERIALS	18 23
PINK AND GREEN	24 29
BOTANICA	30 35
INDULGENT LUXURY	36 41
NOSTALGIA	42 47
Volumes	48 51
Bespoke Slabs	52 87
Handcrafted	88 90
Credits	91

Introduzione / Introduction

IT SCENARIOS 2019, un nuovo spazio di tendenza che offre una panoramica degli ultimi sviluppi del mercato e delle tendenze delle piastrelle per il 2019/20. Con l'Art Direction di Davide Tonelli, abbiamo analizzato le ultime tendenze e sviluppato temi che verranno mostrati in questa installazione.

ENG SCENARIOS 2019, a New Trend Space that offers an overview of the latest market developments and the tile trends for 2019/20. With the Art Direction of Davide Tonelli, We have analysed the latest tendencies and prepared trend themes that will be shown in this installation.

Storytelling Evento

IT Il Futuro della Ceramica ci presenta sfide diverse, con il grande tema della digitalizzazione, che continua ad occupare i nostri giorni lavorativi. In risposta, attraverso la ricerca cerchiamo nuovi modi per dare personalità ai prodotti. Poniti la domanda: "Qual è la mia individualità?" Sperimenta sei moodboards interattivi in Scenarios 2019: ti invitiamo, sull'onda lunga del "tema terrazzo", a pensare a nuove contaminazioni dei materiali con lo scenario COMPOSITA, a sperimentare la sensazione di calore naturale e di accoglienza a casa tua con EARTHY MATERIALS, a scoprire il tono rilassato nato dalla combinazione complementare di PINK AND GREEN, a trovare un rifugio dalla vita moderna con BOTANICA, a ripensare la tua attitudine al lusso con INDULGENT LUXURY e a recuperare le tue radici e tradizioni in NOSTALGIA.

ENG The Future of Ceramics presents us with different challenges, with the mega topic of *digitalisation*, continuing to occupy our working days. In response, we look for ways toward a new research in giving personality to products. Ask yourself the question: "What is my individuality?" Experience six interactive moodboards at Scenarios 2019: we invite you, on the long wave of "terrazzo theme", to think about new contaminations of materials with COMPOSITA scenario, to experience the feel of natural warmth and welcoming to your home with EARTHY MATERIALS, to discover the relaxed tone born by the complementary combination of PINK AND GREEN, to find a refuge from modern life with BOTANICA, to rethink your attitude to luxury with INDULGENT LUXURY and to recover your roots and traditions in NOSTALGIA.

Colour Trends 2019



The colour trends for the coming seasons are a reaction to the trend drivers of today. They are inspired by our striving to contribute and to build better societies and a better world, along with our pursuit of personal development.

We will therefore see powerful feminine purples, spiritual oranges and muted, seasonless pale colours.



COMPOSITA

IT

Il Trend Terrazzo è iniziato lo scorso anno, per esplodere quest'anno sia nel design, che nella grafica e nell'architettura, ed è destinato a durare. Ma Terrazzo non è solo il tipico pavimento in marmo delle case veneziane del '500, è molto di più. Possiamo infatti trovare materiali ingegnerizzati composti da diversi tipi di materiali in risposta alla crescente consapevolezza sul tema del "ripensare i materiali" per un futuro sostenibile. Il cosiddetto "approccio upcycling" in cui i progettisti raccolgono materie prime alternative da rifiuti industriali e domestici trasformandoli in nuovi prodotti più sostenibili per una varietà di scopi.

ENG

The terrazzo trend started last year, to explode this year both in design, graphics and architecture, and it's going to last. But Terrazzo now is not only the typical marble flooring of Venetian houses of the '500, it's much more. We can indeed find engineered materials composed of different kinds of matters in response to the increasing awareness about the theme of "re-thinking materials" for a sustainable future. The so-called "upcycling approach" where designers harvest alternative raw good from industrial and domestic waste turning them into new more sustainable products for a variety of purposes.



1. Intonaco fine | *Fine plaster*
2. Paper / Cardboard
3. Legno acero | *Wood maple*
4. Terrazzo
5. Grandinetti graniglia | *Grandinetti pastina*
6. Confetti terrazzo board
7. Stone italiana
8. Silestone
9. Mosaico ceramico | *Ceramic mosaic*
10. Listello pasta bianca smaltato lucido | *White body listello glossy*
11. Grandinetti stripes



Formati / Sizes

Index

WALL



7,5x30 SCLB730
3"x12"

10. Listello smaltato lucido | *White body listello glossy*

FLOOR



60x60
24"x24"

6. Confetti terrazzo board



Formati / Sizes

Index

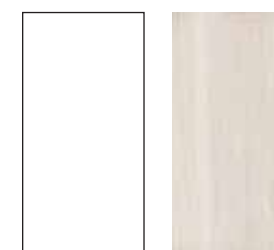
WALL



30x30
12"x12"

5. Grandinetti graniglia | *Grandinetti pasta*

FLOOR



30x120
12"x48"

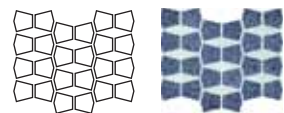
3. Legno acero | *Wood maple*



Formati / Sizes

Index

WALL

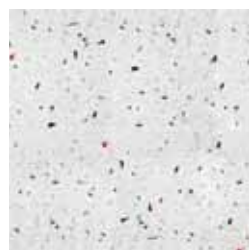
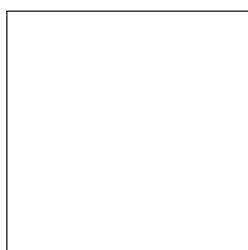


30x30
12"x12"

SCMB3030

9. Mosaico ceramico | *Ceramic mosaic*

FLOOR



60x60
24"x24"

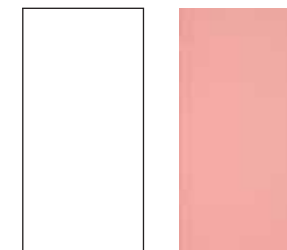
6. Confetti terrazzo board



Formati / Sizes

Index

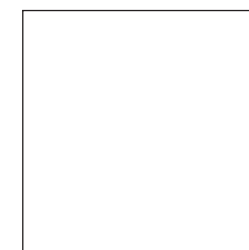
WALL



60x120
24"x48"

1. Intonaco fine | *Fine plaster*

FLOOR



120x120
48"x48"

4. Terrazzo

EARTHY MATERIALS

IT

I materiali terrosi e non "definiti" hanno il loro fascino particolare, e i designer lo hanno iniziato a notare. Sulla scena moderna dell'arredamento e dell'illuminazione, negli schemi di interior design e sulle passerelle della moda, c'è stata una tendenza back-to-basics, un movimento in cui materiali impeccabili fatti dall'uomo sono stati scavalcati in favore di elementi ricomposti e presenti in natura - ognuno scelto appositamente per la propria imperfezione e bellezza senza artifici. Le palette colori vanno dall'argilla e sabbia marrone ai verdi foresta e muschio fino ai toni rossi e dorati che ricordano il sole.

ENG

Earthy, unrefined materials have their own particular allure, and designers have begun to notice. On the modern furniture and lighting scene, in interior design schemes, and on fashion runways, here's been a noticeable back-to-basics trend, a movement in which flawless man-made materials have been passed over in favor of repurposed and naturally occurring elements - each chosen precisely for its imperfection and unvarnished beauty. Color palettes range from dirt, clay, and sand browns; forest, moss and grass-like greens; red and golden tones reminiscent of the sun.



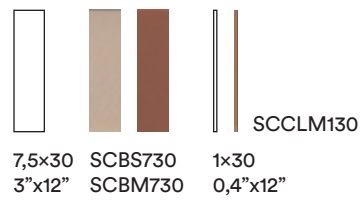
1. Cotto Brioni | *Cotto Brioni*
2. Terre crude Brioni | *Raw lands Brioni*
3. Listelli Matt | *Matt borders*
4. Cotto naturale | *Natural cooked*
5. Sughero | *Cork*
6. Losanga Vintage | *Vintage lozenge*
7. Grandinetti Terrazzo Venezia | *Terrazzo Venice*
8. Brick matt | *Matt brick*
9. Struttura lucida | *Glossy structured*
10. Ottagono smaltato | *Octagon glaze*



Formati / Sizes

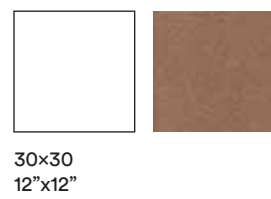
Index

WALL



3. Listelli Matt | *Matt borders*
 9. Struttura lucida | *Glossy structured*

FLOOR



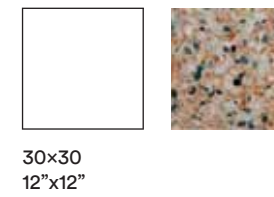
5. Sughero | *Cork*



Formati / Sizes

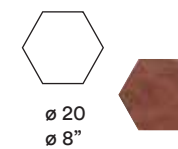
Index

WALL



7. Grandinetti Terrazzo Venezia | *Terrazzo Venice*

FLOOR



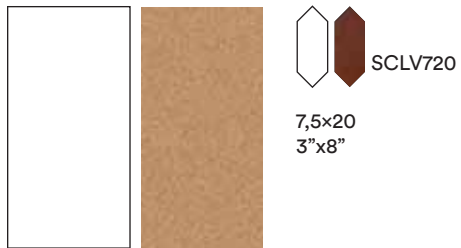
1. Cotto Brioni | *Cotto Brioni*



Formati / Sizes

Index

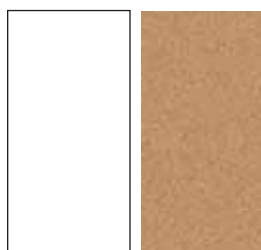
WALL



- 5. Sughero | Cork
- 6. Losanga Vintage | Vintage lozenge

30x60
12"x24"

FLOOR



5. Sughero | Cork

30x60
12"x24"



Formati / Sizes

Index

FLOOR



1. Cotto Brioni | Cotto Brioni

S19

120x120
48"x48"

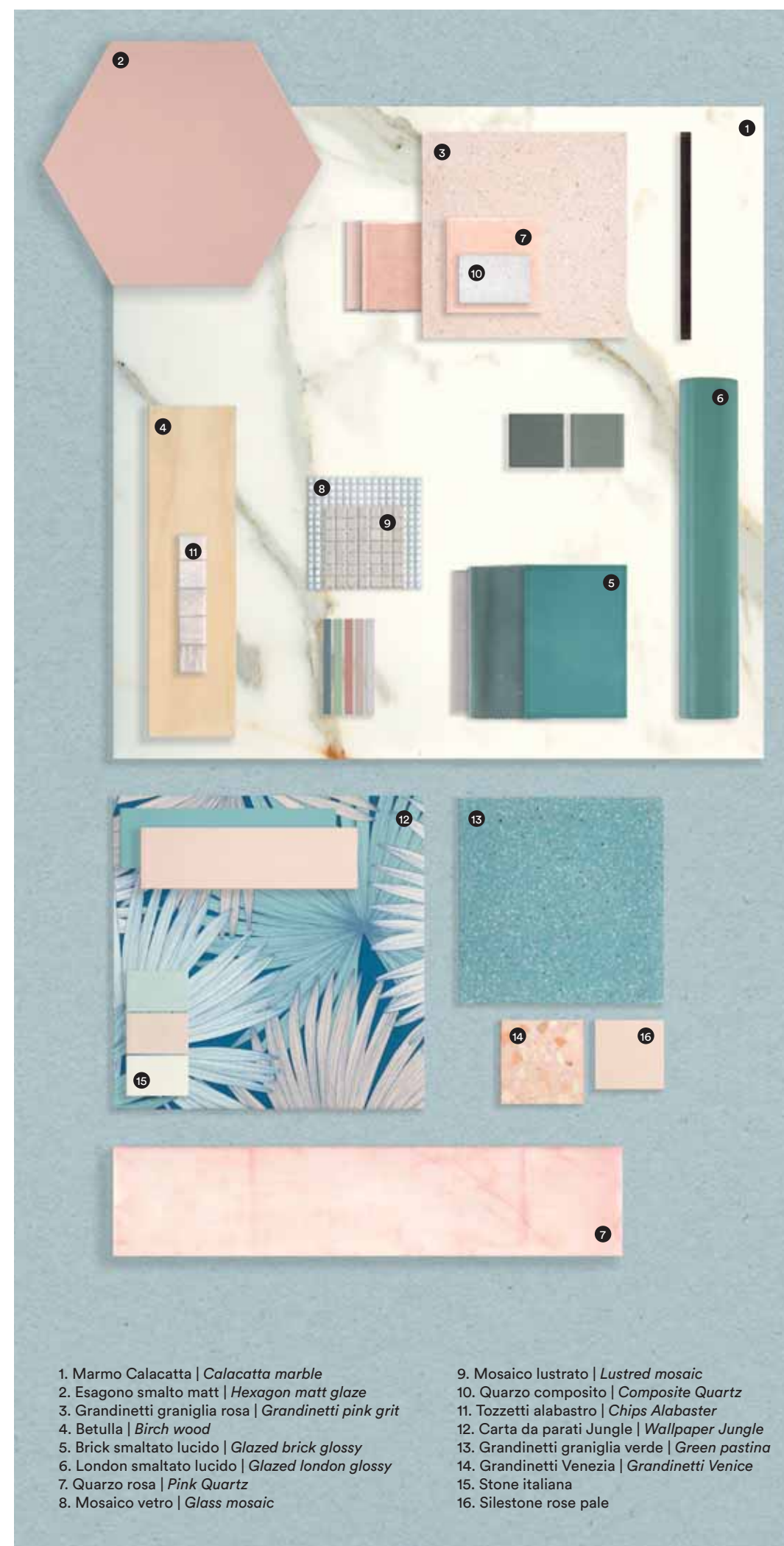
PINK AND GREEN

IT

Se ci sono due colori che hanno dominato l'interior design nell'ultimo anno, questi sono il rosa e il verde. Il Millennial Pink è stato il protagonista del 2018 e la proliferazione di piante nelle nostre case ha portato a una combinazione di colori che oggi è tendenza. La combinazione verde e rosa sarà una grande tendenza per gli interni e l'arredamento della casa per il 2019. Insieme questi due colori si completano perfettamente e funzionano per qualsiasi spazio della casa, dal soggiorno alla camera da letto e persino la cucina e il bagno. Pensa alle vibrazioni tropicali abbinata alle tonalità pastello Art Deco di Miami South Beach. I toni delle piante tropicali come foglie di palma e cactus risultano chic su uno sfondo rosa blush. Accenti dorati e in ottone sono utilizzati per aggiungere un sofisticato tocco di lusso allo spazio, che esalta le vibrazioni retrò tipiche dell' Art Deco.

ENG

If there are two colours which have dominated interior design over the last year, it's pink and green. Millennial Pink has been the protagonist of 2018 and the botanical craze with the proliferation of plants in our homes have led to a colour combination that's bang on trend. Green and Pink colour palette and combination will be a massive trend within interiors and home décor for 2019. Paired together these two colours complement each other perfectly and work for any room in the house, from the living to the bedroom and even the kitchen and bathroom. Think tropical vibes paired with the Art Deco pastel shades of Miami's South Beach. The leafy tones of tropical plants such as palm leaves and cacti look chic against a blush pink background. Use gold and brass accents to add a sophisticated luxe feel to the space, whilst enhancing the pink and green Art Deco retro vibes.



- | | |
|--|--|
| 1. Marmo Calacatta <i>Calacatta marble</i> | 9. Mosaico lustrato <i>Lusted mosaic</i> |
| 2. Esagono smalto matt <i>Hexagon matt glaze</i> | 10. Quarzo composito <i>Composite Quartz</i> |
| 3. Grandinetti graniglia rosa <i>Grandinetti pink grit</i> | 11. Tozzetti alabastro <i>Chips Alabaster</i> |
| 4. Betulla <i>Birch wood</i> | 12. Carta da parati Jungle <i>Wallpaper Jungle</i> |
| 5. Brick smaltato lucido <i>Glazed brick glossy</i> | 13. Grandinetti graniglia verde <i>Green pastina</i> |
| 6. London smaltato lucido <i>Glazed london glossy</i> | 14. Grandinetti Venezia <i>Grandinetti Venice</i> |
| 7. Quarzo rosa <i>Pink Quartz</i> | 15. Stone italiana |
| 8. Mosaico vetro <i>Glass mosaic</i> | 16. Silestone rose pale |



Formati / Sizes

Index

WALL



10x15 SCBG1015
4"x6"

5. Brick smaltato lucido | *Glazed brick glossy*

FLOOR



120x120
48"x48"

1. Marmo Calacatta | *Calacatta marble*



Formati / Sizes

Index

WALL



120x240
48"x96"



SCLG530
5x30
2"x12"

1. Marmo Calacatta | *Calacatta marble*
6. London smaltato lucido | *Glazed london glossy*

FLOOR



20x120
8"x48"

1. Marmo Calacatta | *Calacatta marble*



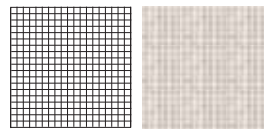
Formati / Sizes

Index

WALL



ø 20
ø 8" SCHP20



30x30
12"x12"

2. Esagono smalto matt | *Hexagon matt glaze*
9. Mosaico lustrato | *Lustred mosaic*



Formati / Sizes

Index

WALL



60x60
24"x24"

13. Grandinetti graniglia verde | *Green pastina*

FLOOR

4. Betulla | *Birch wood*



S19

20x180
8"x70"

BOTANICA

IT

Che ne dite di portare la vita all'aria aperta nella propria casa? Offrendo un modo semplice per riconnettersi con la natura e soddisfare il nostro crescente desiderio di diventare "green", il *botanical trend* ci consente di utilizzare le tonalità e i materiali rinfrescanti e rivitalizzanti del mondo naturale per creare un senso di serenità all'interno della casa. I disegni floreali sono stati inventati da quando è stata inventata la piastrella decorativa, ma il botanical è un nuovo trend che riflette l'influenza del modernismo tropicale negli interni e nel design del prodotto. Ecco quindi l'abbondanza di sfondi ispirati alla flora combinati con prodotti di ispirazione naturale quali pietre e materiali lignei.

ENG

How about bringing the outdoors in? Offering an easy way to reconnect with nature while satisfying our ever-growing desire to go green, the botanical trend allows you to use the refreshing and revitalising shades and materials of the natural world to create a sense of serenity in your home. Floral designs have been around since decorative tile was invented, but botanical is a new trend that reflects the influence of tropical modernism into interiors and product design. Here therefore the abundance of of flora-inspired wallpapers combined with products of natural inspiration such as stones and wood materials.

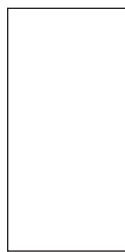




Formati / Sizes

Index

WALL

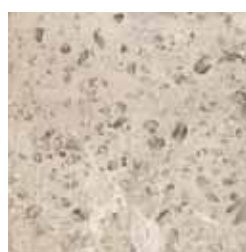
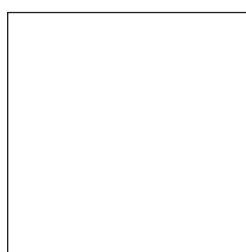


SCCLW260
SCCLT260

30x60
12"x24"

1. Pietra Lumachella | *Lumachella Stone*
13. Bacchetta ceramica | *Ceramic Wand*

FLOOR



60x60
24"x24"

1. Pietra Lumachella | *Lumachella Stone*



Formati / Sizes

Index

WALL



30x30
12"x12"

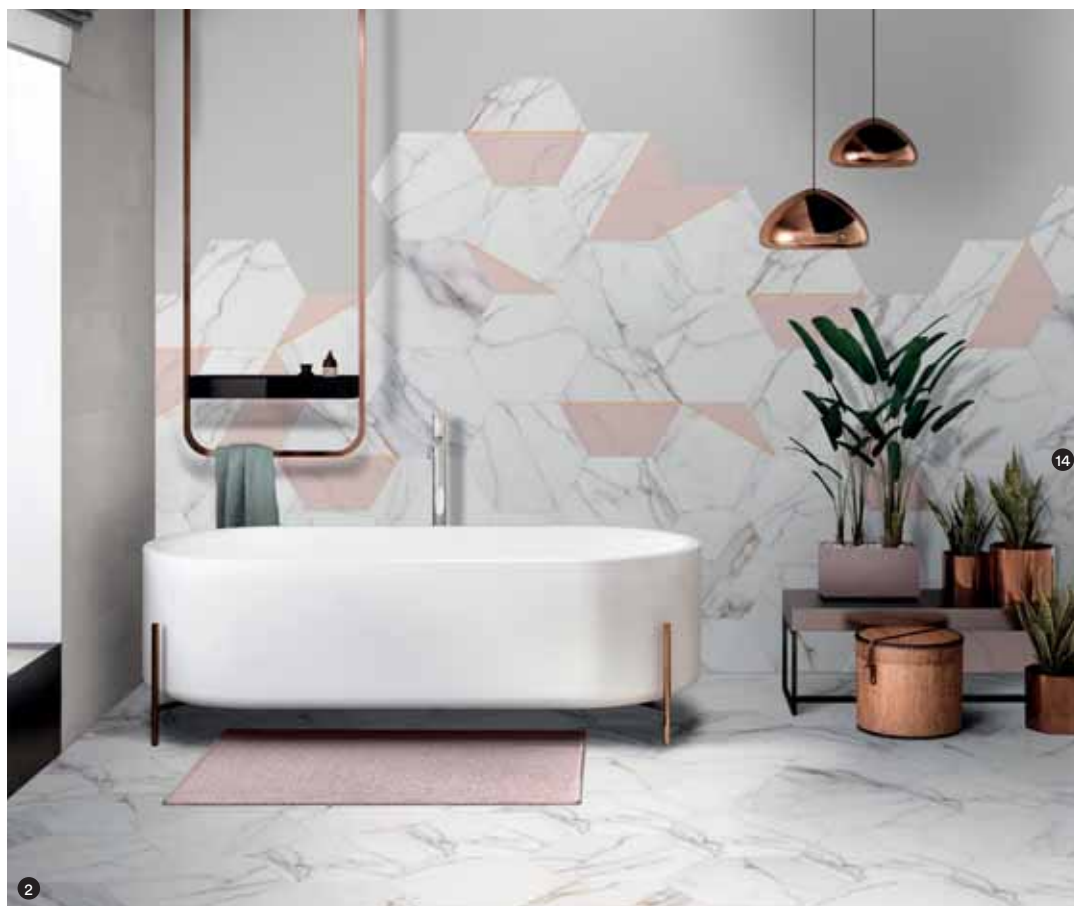
3. Mosaico legno massello | *Wood mosaic massello*

FLOOR



60x120
24"x48"

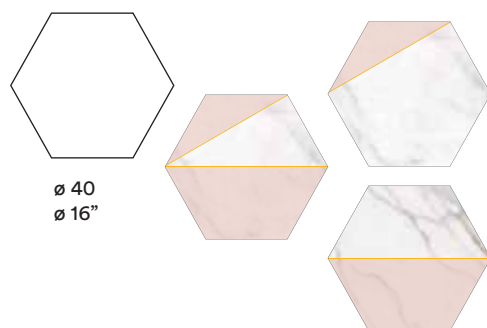
1. Pietra Lumachella | *Lumachella Stone*



Formati / Sizes

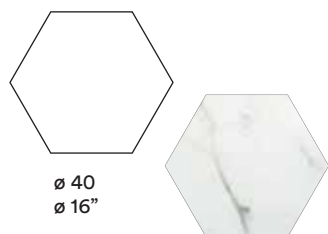
Index

WALL



14. Esagono Decoro Calacatta | *Decor Calacatta*

FLOOR



2. Esagono Marmo Calacatta | *Hexagon Calacatta*



Formati / Sizes

Index

WALL



8. Esagoni ceramici | *Ceramic hexagons*

INDULGENT LUXURY

IT

La tendenza di lusso negli interni persisterà nel 2019. Allo stesso modo, il mondo continuerà ad essere affascinato dai materiali naturali, in particolare, dal modo in cui le loro diverse trame danno profondità e calore a uno spazio. I produttori di mobili infondono così elementi organici con finiture stravaganti, ma anche con una praticità che rende la nozione di opulenza meno intimidatoria. Materiali di alta qualità, stile Art-Deco e artigianato di qualità si fondono in una visione utopica. I materiali sapientemente combinati, i materiali onesti, le idee create creativamente e l'opulenza senza fronzoli creano nuovi tipi di comfort, insieme a un senso di intimità e sontuose impressioni sensoriali.

ENG

The luxury trend in interiors will persist in 2019. Likewise, the world will continue to be captivated by natural materials - specifically, how their diverse textures lend depth and warmth to a space. Furniture makers are thus infusing organic elements with extravagant finishes, but also with a practicality that makes the notion of opulence less intimidating. High-end materials, Art-Deco styling and good-quality craftsmanship come together in a Utopian vision. Cleverly combined, honest materials, creatively implemented ideas and an unfussy opulence create new kinds of comfort, together with a sense of intimacy and sumptuous sensory impressions.



- | | |
|---|---|
| 1. Travertino silk georgette <i>Travertine silk georgette</i> | 10. Grigio fumo <i>Smoke grey</i> |
| 2. Emperador brown | 11. Diamantato smalto oro <i>Diamond Gold</i> |
| 3. Nero marquinia <i>Black marquinia</i> | 12. Listello oro <i>Gold listello</i> |
| 4. Losanga ottone punzolato <i>Lazenge punched brass</i> | 13. Vetro <i>Glass</i> |
| 5. Pietra di grey <i>Graystone</i> | 14. Alluminio <i>Aluminum</i> |
| 6. Listello legno <i>Border wood</i> | 15. Ottone <i>Brass</i> |
| 7. Cornerline matt | 16. Esagono smalto reagente <i>Hexagon reagent</i> |
| 8. Mosaico rovere <i>Oak mosaic</i> | 17. Forme smaltato oro craquèle <i>Gold craquèle shapes</i> |
| 9. Composizione su rete <i>Stone mosaic</i> | 18. Carbonato di Lacco <i>Carbonate di Lacco</i> |



Formati / Sizes

Index

WALL



60x120
24"x48"

5. Pietra di grey | *Graystone*
13. Vetro | *Glass*

FLOOR



60x120
24"x48"

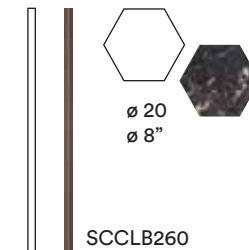
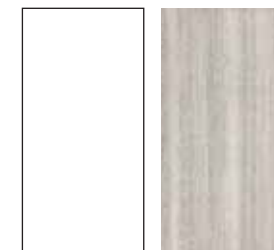
5. Pietra di grey | *Graystone*



Formati / Sizes

Index

WALL



30x60
12"x24"

2x60
0,8"x24"

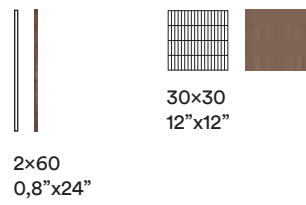
1. Travertino silk georgette | *Travertine silk georgette*
7. Smalto matt | *Cornerline matt*
2. Emperador brown



Formati / Sizes

Index

WALL



- 6. Listello legno | *Border wood*
- 8. Mosaico rovere | *Oak mosaic*

FLOOR



- 18. Carbonato di Lacco | *Carbonate di Lacco*



Formati / Sizes

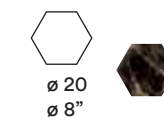
Index

WALL



- 4. Losanga ottone punzolato | *Lozenge punched brass*
- 10. Grigio fumo | *Smoke grey*

FLOOR



- 2. Emperador brown

NOSTALGIA

IT

La gente spesso cerca di progettare una via di fuga e, in questo clima politico attuale, non sorprende che le aziende si stiano rivolgendo al passato per portare alle persone un impulso positivo. Formati quadrati, colori caramellati e motivi retrò che ricordano gli anni '50 e "Ceramica" nel vero senso della parola, ricca di effetti materici e con motivi fatti a mano e colori pastello. La nostalgia è definita come; "un desiderio sentimentale o affetto malinconico per un periodo del passato". L'obiettivo è evocare ricordi e associazioni piacevoli al fine di creare un ambiente familiare e conforme.

ENG

People often look to design for an escape and, in this current political climate, it's unsurprising that companies are turning to the past to bring people a euphoric boost. Square formats, candy colors and retro patterns reminiscent of the 1950s and of "ceramics" in the true sense of the word, rich in material effects and featuring hand made patterns and pastel colours. Nostalgia is defined as; 'a sentimental longing or wistful affection for a period of the past'. The goal is to evoke pleasant memories and associations in order to create a familiar and comfortable environment.





Formati / Sizes

Index

WALL



7,5x15
3"x6"



SCBB715



SCBG715



SCBT715

2. Brick lucidi | Glossy bricks



Formati / Sizes

Index

WALL



7,5x15
3"x6"



SCBS715

2. Brick lucidi | Glossy bricks



Formati / Sizes

Index

WALL



30x30
12"x12"



SCMM3030

7. Mosaico metallizzato | *Metallic Mosaic*

FLOOR



20x20
8"x8"



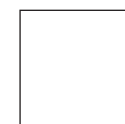
5. Pietra Basalto | *Basalt Stone*



Formati / Sizes

Index

WALL



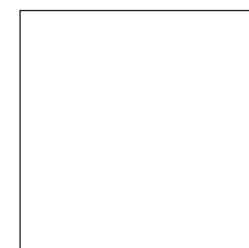
30x30
12"x12"



SCMB3030

8. Mosaico graniglia bronzo | *Bronze grit Mosaic*

FLOOR



120x120
48"x48"

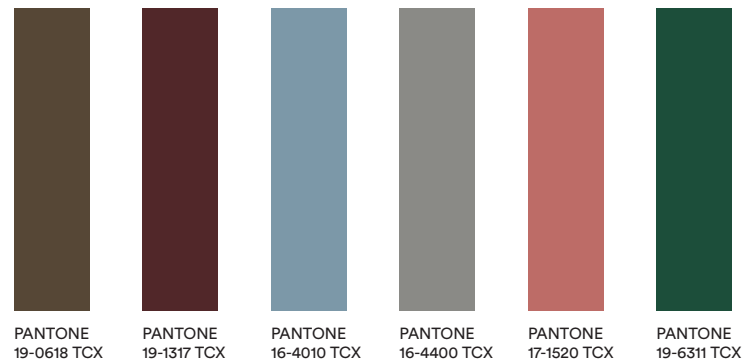


1. Pietra Lavica | *Lava Stone*

VOLUMES

IT Superfici voluminose da rivestimento declinate in una palette di sei colori pastello. Il risultato sono delle pareti caratterizzate da un eccezionale bilanciamento tra forma e colore. Un movimento che appare a distanza come un soft melange.

ENG Voluminous wall surfaces declined in a six colours palette. The result are a rich wall textile with an exceptional balance between shape and colour. A dynamic play appearing from a distance as a smooth melange.



TACTILE



SCTA3060B

SCTA3060O

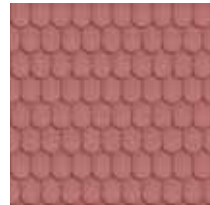
30x60
12"x24"

IT Celebrare le forme aggiungendo volumi e dettagli ci immerge totalmente in una esperienza che coinvolge il senso del tatto quanto quello della vista.

ENG Celebrating forms by adding volumes and details totally immerse ourselves in an experience that indulges the sense of touch as well as the sense of sight.



SAVOIARDO



SCSA3030C

30x30
12"x12"



SCSA3030GB

IT Una forma arrotondata irresistibilmente tattile che ci spinge a toccare e sentire oltre che guardare. Un design che richiama la forma dei biscotti dei bambini trasformato in pezzi che cattureranno anche gli adulti.

ENG A rounded form irresistibly tactile urging us to touch and feel as well as look. A design that suggests the shape of biscuits for young children, transformed into pieces that will captivate adults too.



CRAFTED



SCCR2020DB

20x20
8"x8"



SCCR2020T

IT Una superficie soft il cui ordine è interrotto da righe disegnate artigianalmente sulla superficie in modi inaspettati. Un look minimalista che conferisce appeal al monocromatismo.

ENG A calm, soothing look surface whose sense of order is interrupted by crafted stripes draw on texture in unexpected ways. A minimalistic look that gives appeal to monochrome.



S19

Bespoke Slabs

IT

GAMMADUE è in grado di gestire richieste individuali utilizzando i processi di stampa digitali applicati a grandi formati. Se vuoi qualcosa di specifico o un disegno a complemento per il tuo spazio, possiamo aiutarti riproducendo la tua idea personale o creando un disegno personalizzato in esclusiva. Le nostre personalizzazioni sono quotate individualmente. Per ricevere una quotazione personalizzata per cortesia scrivere una mail a ufficio.stile@gammadue.com. Le lastre sono prodotte con una doppia tecnologia: *a caldo* mediante stampa digitale in quadricromia di inchiostri ceramici sottoposti ad un processo di cottura che ne consente un utilizzo del prodotto più ampio come campi di impiego, e a freddo in cui si privilegia invece la resa cromatica in quanto la stampa digitale avviene ad una risoluzione maggiore ma con accortezze da rispettare che riguardano le condizioni ambientali, la pulizia e la manutenzione.

ENG

GAMMADUE undertakes individual commissions using digital printing techniques slabs. If you want something specific or need a complementary design for a wall, we can help reproducing your own idea or creating a customized design. All our special commissions are individually priced. Please contact ufficio.stile@gammadue.com for a quote. The slabs are produced with a dual technology: fired by digital four-color printing of ceramic inks subjected to a firing process that allows a wider range of product applications, and cold where the emphasis is instead on the color output in which digital printing takes place at a higher resolution, but with careful precautions regarding the environmental conditions, cleaning and maintenance.

Double Technology

COLD



Nature
120x260 | 48"x104"



Urbanscape
120x260 | 48"x104"



Multiple
120x260 | 48"x104"



Watermark
120x260 | 48"x104"

FIRED



Florilege
120x260 | 48"x104"



Florentine
120x260 | 48"x104"



Marquetry
120x260 | 48"x104"



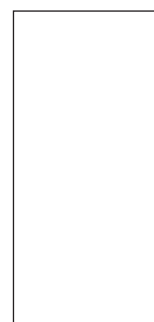
Beauty
120x260 | 48"x104"

NATURE



IT/ La celebrazione della natura e del suo potere. Le trame della natura sono caratterizzate da elementi di sperimentazione nella forma e nei colori. Il collage di textures crea disegni accattivanti. I colori chiave sono il rosa e il verde su sfondo nero per enfatizzare l'utilizzo dei colori saturi.

ENG/ The celebration of nature and of its power. The textures of nature are merged with elements of experimentation in shape and colours. Collaged textural combination create catchy designs. The key colours are pink and green with black in background to enhance. The confident use of saturated colour.



120x260
48"x104"



SCNA120260BA



NATURE / Colour Variants

BLACK



SCNA120260BA



SCNA120260BB



SCNA120260BC

PINK



SCNA120260PA



SCNA120260PB



SCNA120260PC

WHITE



SCNA120260WA

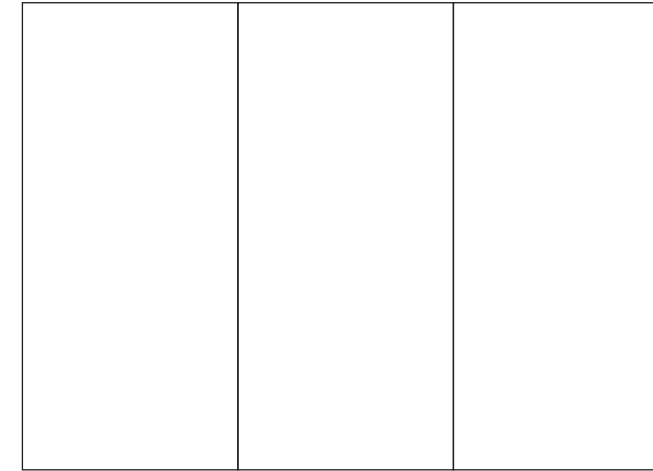


SCNA120260WB



SCNA120260WC

Schemi di posa / Laying systems



120x260 | 48"x104"



A B C

CARATTERISTICHE TECNICHE

technical features caractéristiques techniques	NORMA STANDARD	PRODOTTO DECORATO CON TECNOLOGIA A FREDDO PRODUCTS DECORATED WITH COLD DECORATING TECHNOLOGY
Resistenza alla rottura Breaking strenght	ISO 10545.4	50 N/mm ²
Resistenza all'abrasione profonda Deep resistance	ISO 10545.6	La decorazione di questi prodotti non ha una buona resistenza ai graffi di oggetti acuminati molto duri come ad esempio metallo, pietra, vetro e gres. Prestare la massima attenzione alla movimentazione durante le operazioni di posa evitando di urtare o strisciare utensili ed oggetti duri acuminati sulla superficie. This product's decoration is not scratch resistant to hard, sharp objects such as metal, stone, glass, and stoneware. Be extremely careful when handling the product during installation, making sure not to bump or slide tools or other sharp objects against the surface.
Resistenza alle macchie Stains Resistance	ISO 10545.14 ASTM CC1378	Resiste alle macchie di alimenti e bevande conforme alla classe 5. Non resiste alla tintura di iodio, blu di metilene, pennarello indelebile. Class-5 resistance to food and beverage stains. Not resistant to iodine dye, methylene blue, or permanent marker.
Resistenza dei colori alla luce Resistance of colours to light	DIN 51094	Superficie inalterata Surface unaltered
Resistenza agli attacchi chimici Chemical resistance	ISO 10545.13 ASTM C650	GLA-GHB
Assorbimento d'acqua Water absorption	ISO 10545.3 ASTM C373	0,1%
Resistenza al gelo Frost resistant	ISO 10545.12 ASTM C1026	Conforme Complies with the standards / Conforme aux normes / Anforderungenerf erfüllt / Conforme con las normas
Grado di variazione cromatica Colour shade variation		V1

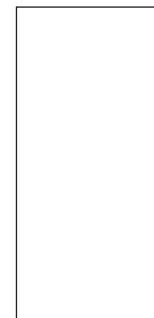
URBANSCAPE



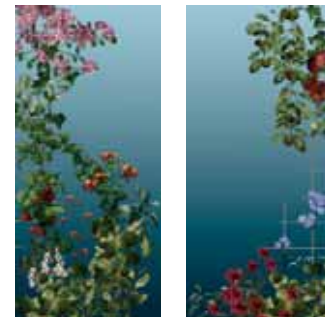
SCUR120260BB

IT/ Illustrazioni botaniche caratterizzate da creative palette colori. Un futuro ipernaturale in cui i colori appaiono illuminati da sfumature fluorescenti accese dal colore verde. La natura è incorniciata in affreschi di bellezza immobile. L'urgenza di riconnettersi con la natura rimane una necessità molto sentita. Questi grafismi con richiami diretti alla natura possono essere impiegati in ambito urbano apportando elementi naturali alla vita quotidiana.

ENG/ Botanical illustrations characterized by creative colour schemes. An hypernatural future in which colours appear illuminated with soft fluorescent tones accented by green colour. Nature is freeze-framed into frescoes of still beauty. The urg to reconnect with nature remains strong and biophilic designs. That draw directly on nature can be applied to urban environment bringing a natural element to day-to day life.



120x260
48"x104"



URBANSCAPE / Colour Variants

BLUE



SCUR120260BA



SCUR120260BB



SCUR120260BC

YELLOW



SCUR120260YA



SCUR120260YB



SCUR120260YC

RED



SCUR120260RA

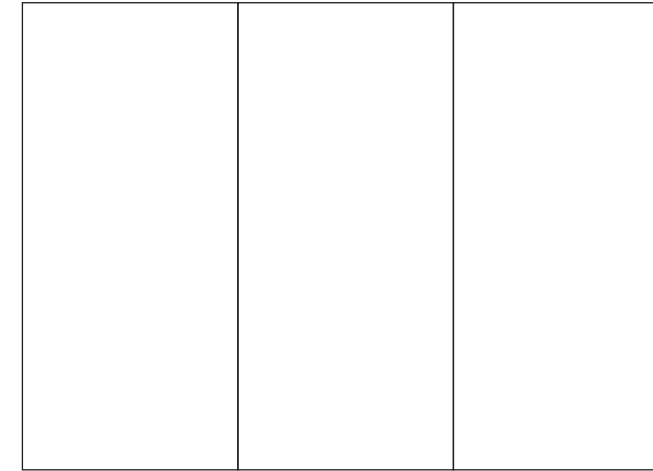


SCUR120260RB



SCUR120260RC

Schemi di posa / Laying systems



120x260 | 48"x104"

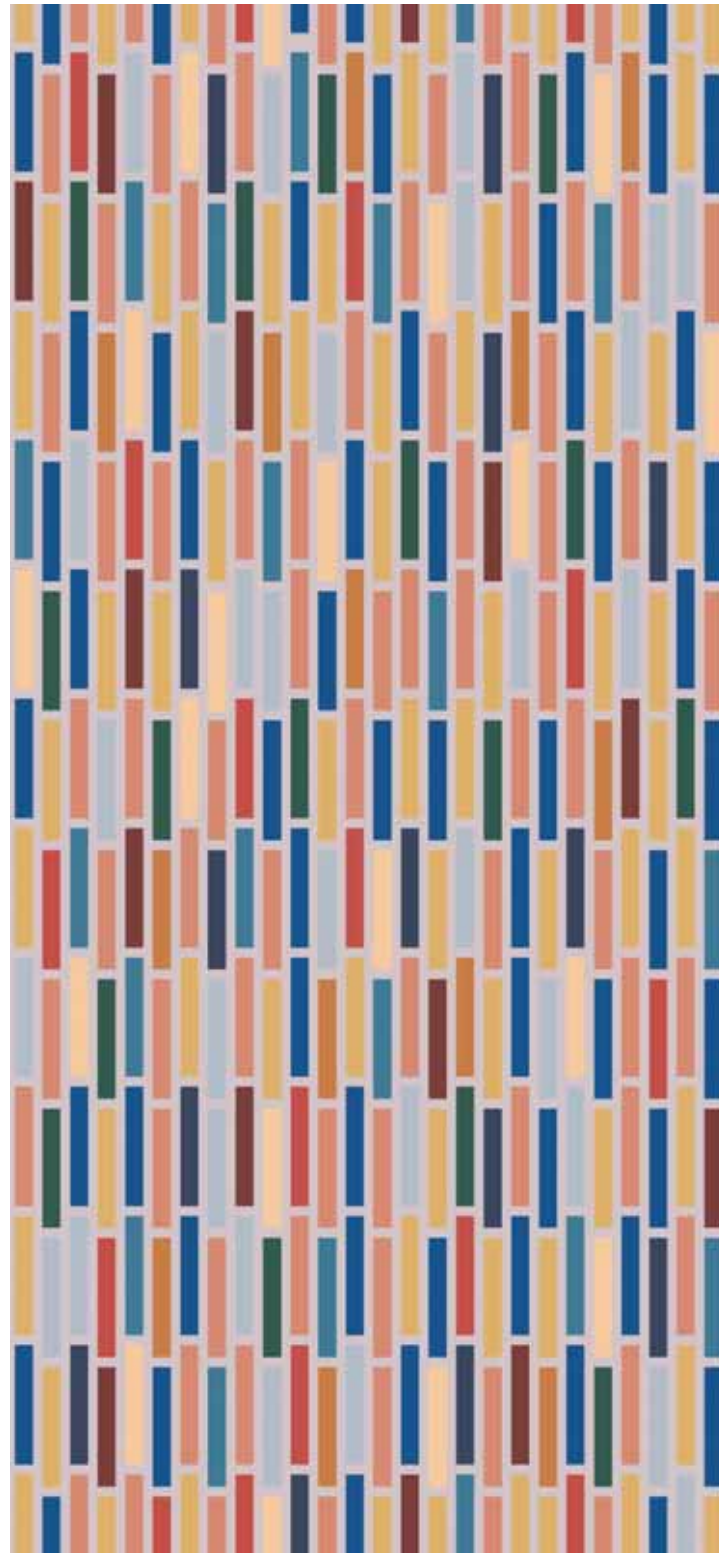


A B C



B B C A

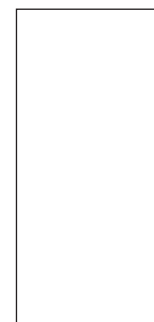
MULTIPLE



SCMU120260M

IT/ È il momento di sostituire i colori "piatti" con quelli che creano emozione e empatia. Textures originali che giocano con un mix di colori. Queste combinazioni di motivi audaci sono ispirate al postmodernismo. Le interazioni giocose ci sfidano a inventare e immaginare, perché "il gioco" è un modo di essere umani.

ENG/ It's time to exchange flat colours with ones having a deep emotion and richness. Original textiles that play with a melded, layered mix of colours. These bold pattern combinations are post-modernist inspired. Playful interactions challenge us to invent and imagine, cause "play" is a mode of being humans.

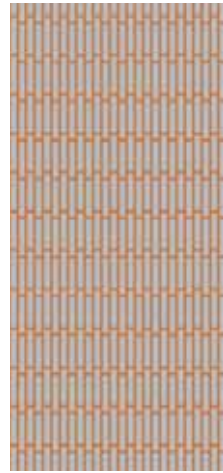


120x260
48"x104"

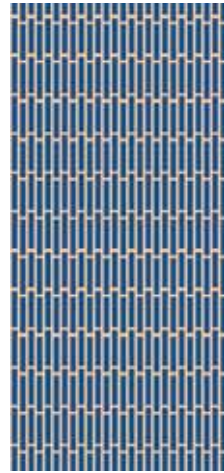


MULTIPLE / Colour Variants

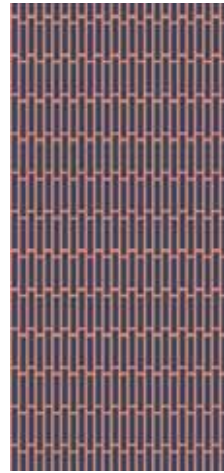
BICOLORED



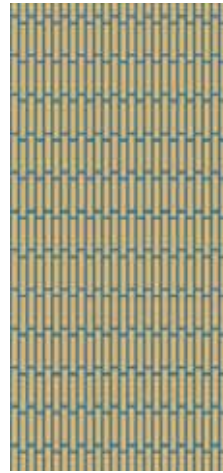
SCMU120260G



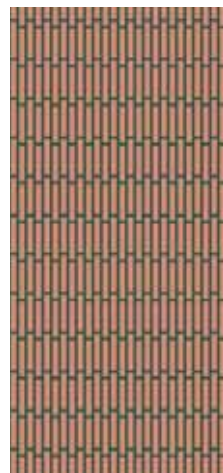
SCMU120260B



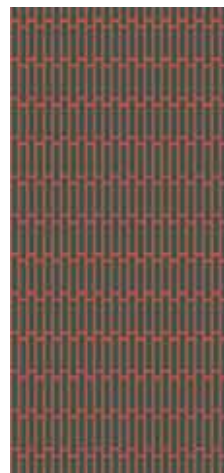
SCMU120260P



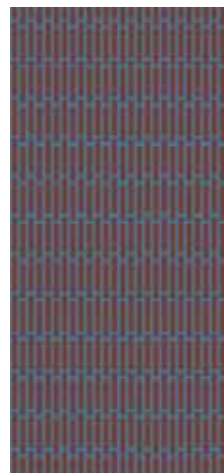
SCMU120260Y



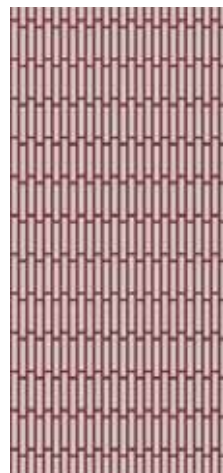
SCMU120260O



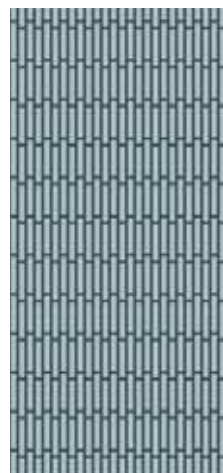
SCMU120260GR



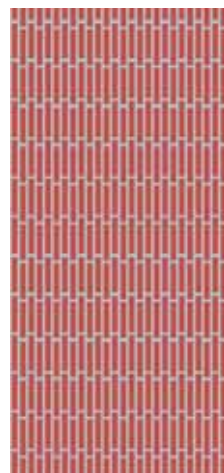
SCMU120260RB



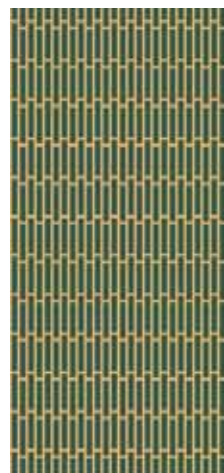
SCMU120260GRE



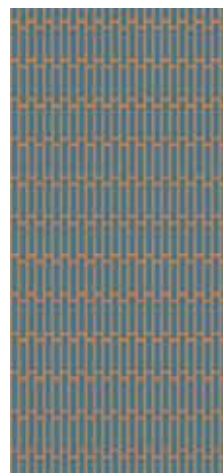
SCMU120260GGR



SCMU120260R

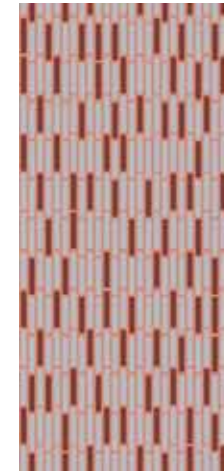


SCMU120260GY

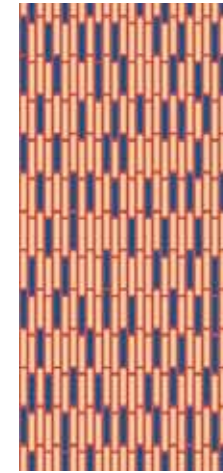


SCMU120260BO

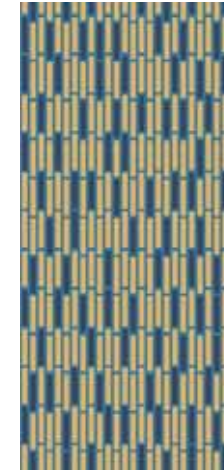
TRICOLOR



SCMU120260GR



SCMU120260YB



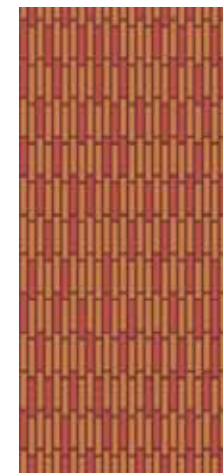
SCMU120260YP



SCMU120260YO



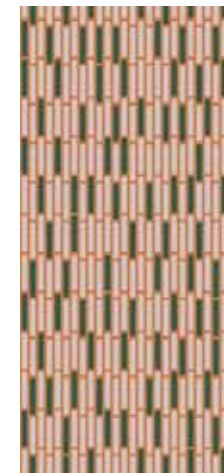
SCMU120260GP



SCMU120260OR

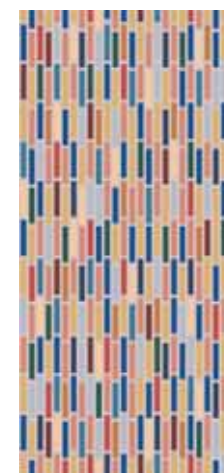


SCMU120260GB



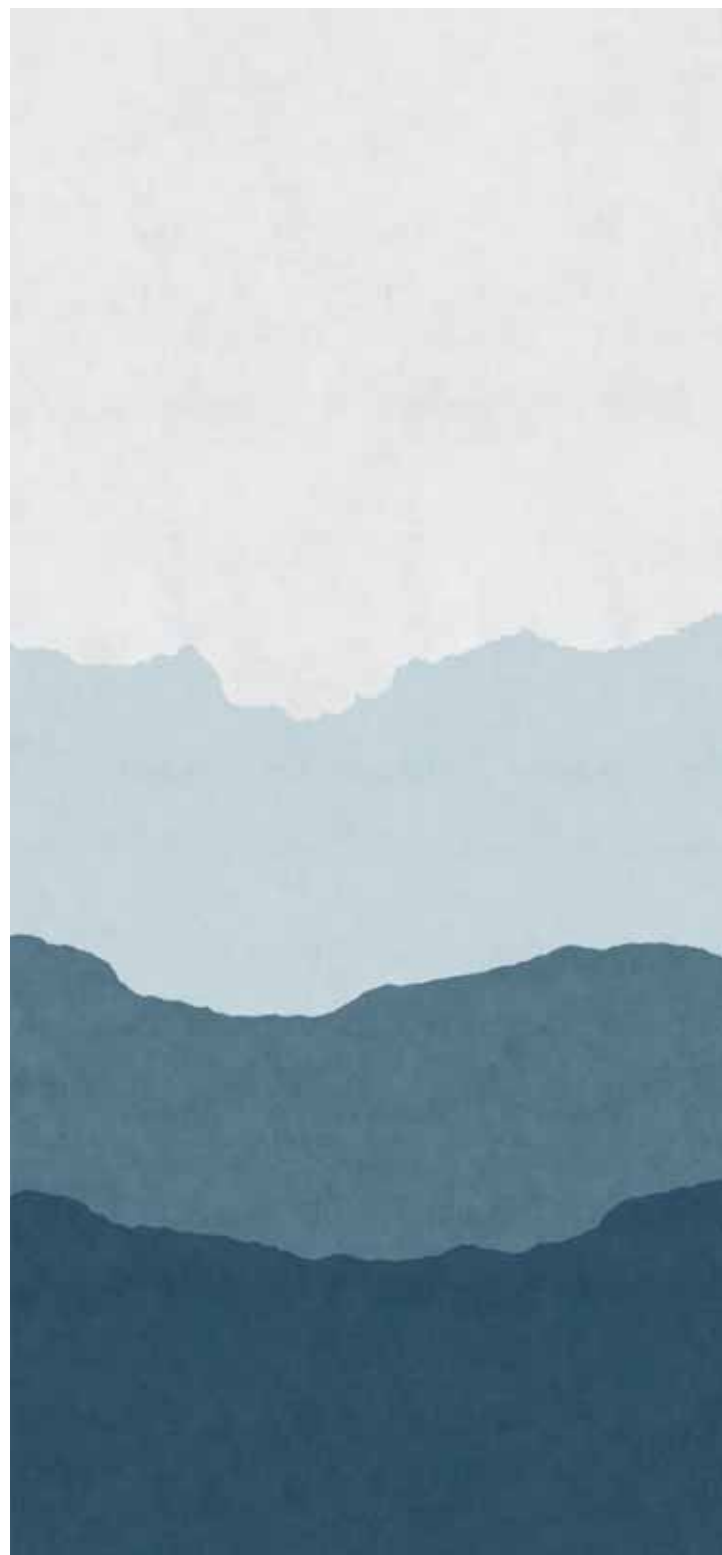
SCMU120260BGG

MIX



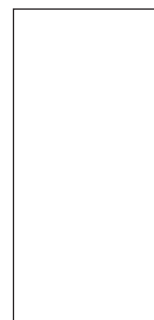
SCMU120260M

WATERMARK



IT/ In questo tema di ispirazione minerale, reminiscenze di paesaggi e formazioni rocciose, costruite con sfumature di blu-grigi rispecchiano la bellezza austera della natura. Una nuova estetica in grado di rappresentare al tempo stesso le sfaccettature calme e dinamiche del mondo naturale. La natura come vera innovatrice, come fonte di ispirazione per il design creativo.

ENG/ In this mineral-inspired theme, reminiscences of innovations landscapes and rock formations on built with blue-greys hues mirrors nature's austere beauty. A new aesthetic is talking hold blending the natural represents both the calming and dynamic facets of the natural world. Nature as the true innovator, as a source of inspiration for creative design.



120x260
48"x104"



SCWA120260BA



WATERMARK / Colour Variants

BLUE



SCWA120260BA



SCWA120260BB



SCWA120260BC

GREEN



SCWA120260GA



SCWA120260GB

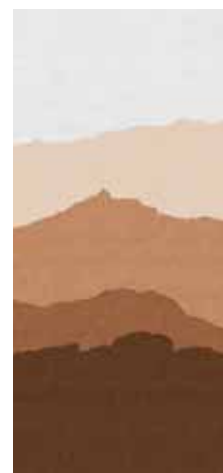


SCWA120260GC

RED



SCWA120260RA

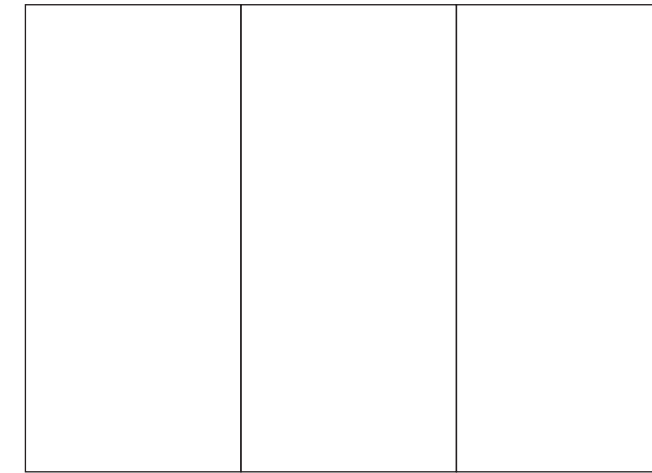


SCWA120260RB

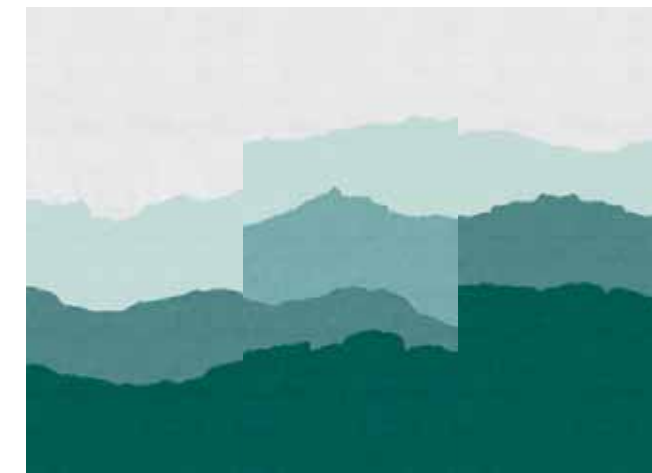


SCWA120260RC

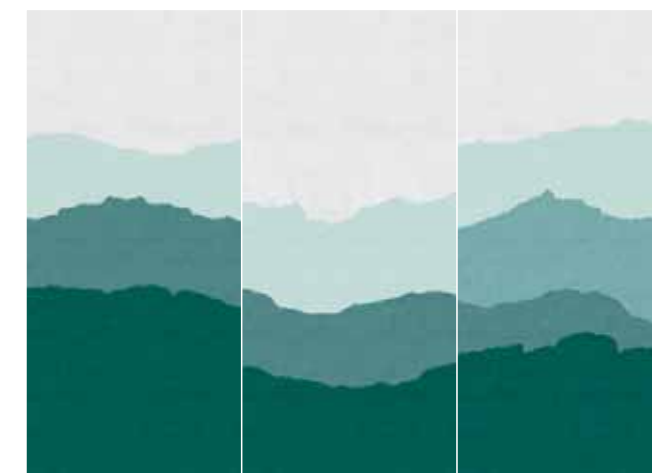
Schemi di posa / Laying systems



120x260 | 48"x104"



A B C



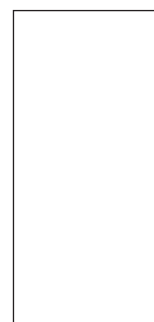
C A B

FLORILEGE



IT/ La creatività italiana e la versatilità attraverso l'attualizzazione di progetti barocchi tradizionali. Disponibile in più varianti di colore. La stampa floreale è impreziosita da intricati dettagli in filigrana dorata. Uno stile sontuoso che dona eleganza e ricchezza al muro come fossero gioielli per un incanto urbano.

ENG/ The Italian creativity and versatility through the actualization of traditional baroque designs. That comes in multiple colour variants. Floral print is embellished with intricate golden filigree detailing. A sumptuous style that gives elegance and richness to wall as they were jewels for a urban enchantment.



120x260
48"x104"

SCFL120260B



FLORILEGE / Colour Variants

BLUE



SCFL120260B

ACQUAMARINE



SCFL120260A

YELLOW



SCFL120260Y

LAVANDER



SCFL120260L

RED



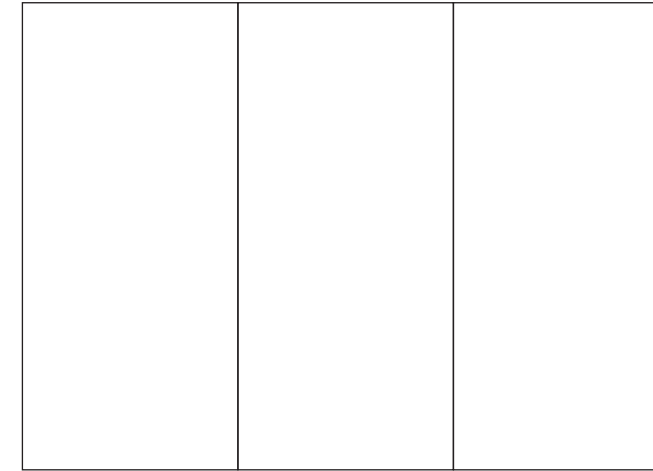
SCFL120260R

GREEN



SCFL120260G

Schemi di posa / Laying systems



120x260 | 48"x104"



A B C

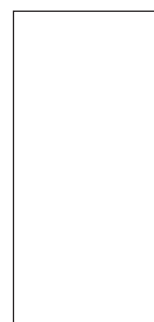
FLORENTINE



SCFLO120260W

IT/ La tecnica della carta marmorizzata si riferisce a una varietà di aspetti decorativi che assomigliano alla consistenza venosa del marmo. Il fatto che i graphic designers stiano riprendendo il marmo è piuttosto affascinante. Con i suoi colori contrastanti e la mancanza di simmetria, la tradizionale stampa marmorizzata oscilla sul filo del rasoio tra il sembrare super classico e l'ultra trendy. I designers di carte da parati e stoffe stanno dando nuova linfa alle grafiche tradizionali trasformando la marmorizzazione del pattern in un nuovo lusso attingendo a colori ricchi, aggiungendo metalli, riducendo al minimo le tavolozze dei colori e sperimentando con le proporzioni.

ENG/ The technique of Marbled paper refers to a variety of decorative appearances that resemble the vein-like texture of marble. The fact that modern graphic designers are bringing marble back is, however, quite fascinating. With its clashing colours and lack of symmetry, traditional paper marbling print wobbles on the knife edge of looking both super fussy and ultra trendy. Modern wallpaper and fabric designers are breathing new life into its very traditional techniques. They are transforming paper marbling into the new luxury by drawing on rich hues, adding metallics, minimizing colour palettes and tinkering with scale.



120x260
48"x104"



FLORENTINE / Colour Variants

WHITE



SCFLO120260W

PISTACHIO



SCFLO120260P

AQUAMARINE



SCFLO120260A

GREEN



SCFLO120260G

CURCUMA



SCFLO120260C

TERRACOTTA



SCFLO120260T

SALMON



SCFLO120260S

OLIVE



SCFLO120260O

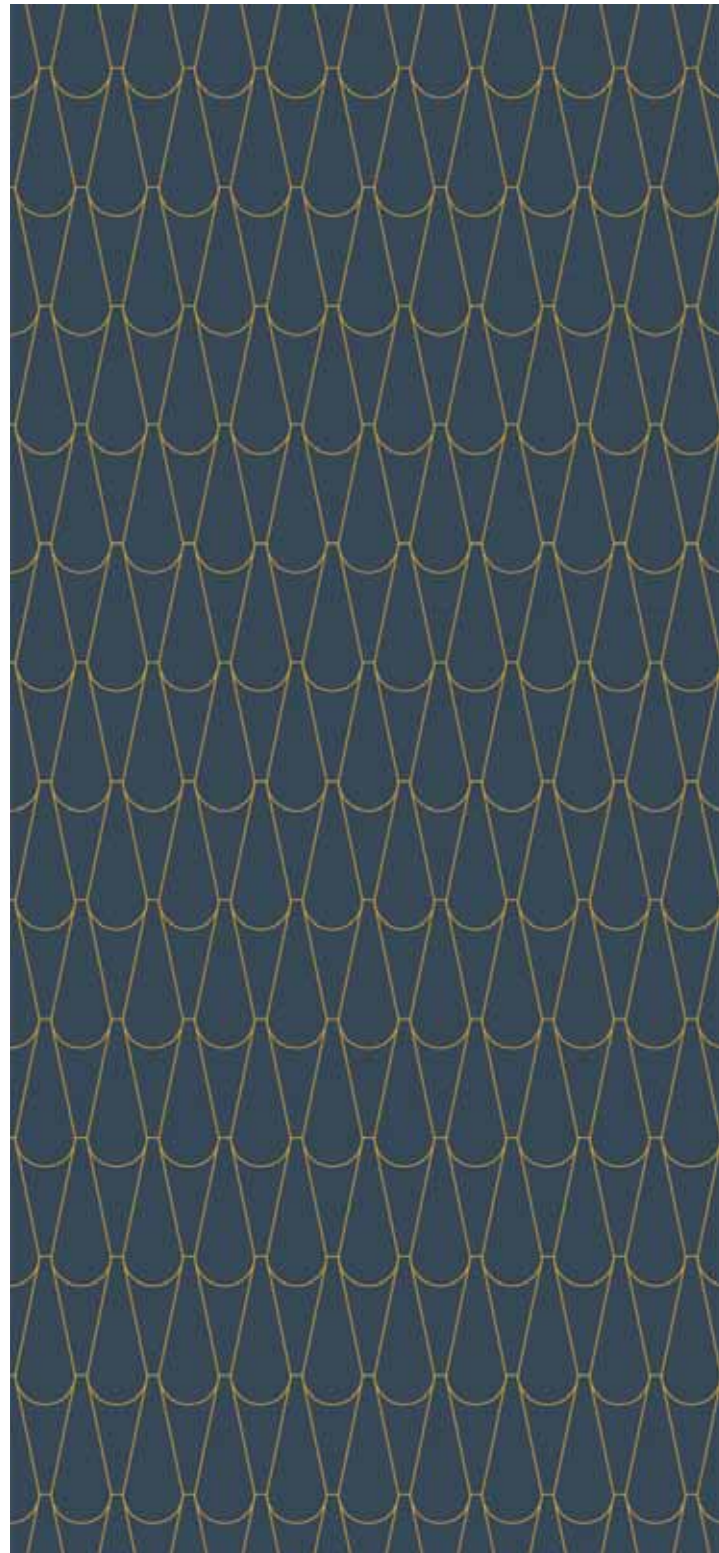
INKED



SCFLO120260I



MARQUETRY

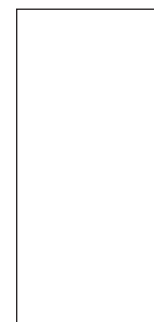


SCMA120260B

IT/ Materiali e colori ricchi. Le curve e gli archi sensuali tipici dell'Art Deco sono i punti chiave di lettura. Una ricca palette enfatizza il ritorno a un approccio tradizionale al lusso. Combinazioni opulente tra colori solidi e il color creano interni che deliziano l'occhio.

ENG/ Rich materials and colours. Sensuous curves and arches typical of Art Deco are key points of lecture.

A rich palette references the return to a traditional approach to indulgent luxury. Opulent combinations between solid colours and deep ochre create interiors that delight the eye.



120x260
48"x104"



MARQUETRY / Colour Variants

WHITE



SCMA120260W

BLUE



SCMA120260B

GREY



SCMA120260G

RED



SCMA120260R

GREEN



SCMA120260GR

ORANGE



SCMA120260O

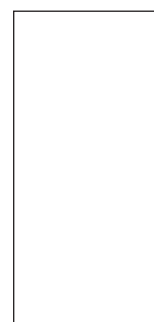


BEAUTY



IT/ Beauty è un "programma" di intarsi marmorei, in cui sfumature morbide e setose sono l'aspetto esteriore di spazi senza compromessi in cui "la bellezza" è il cuore del progetto, per donare alle pareti una propria identità individuale.

ENG/ Beauty is a "program" of marble's marquetry in which soft, silky and creamy signature hues are the outward face of uncompromising spaces that puts "the beauty" at the hearth of the project and help walls to achieve an individual identity.



120x260
48"x104"

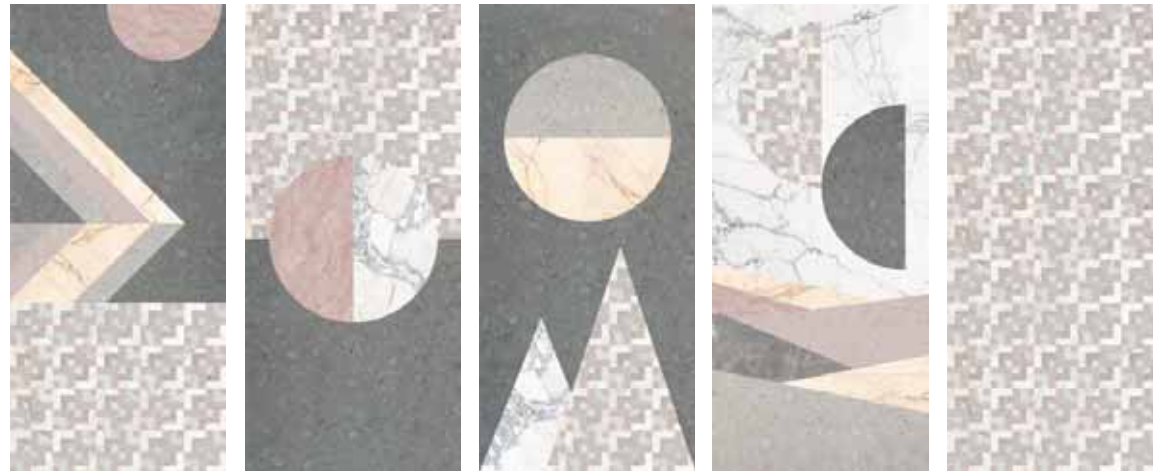
SCBE120260PA





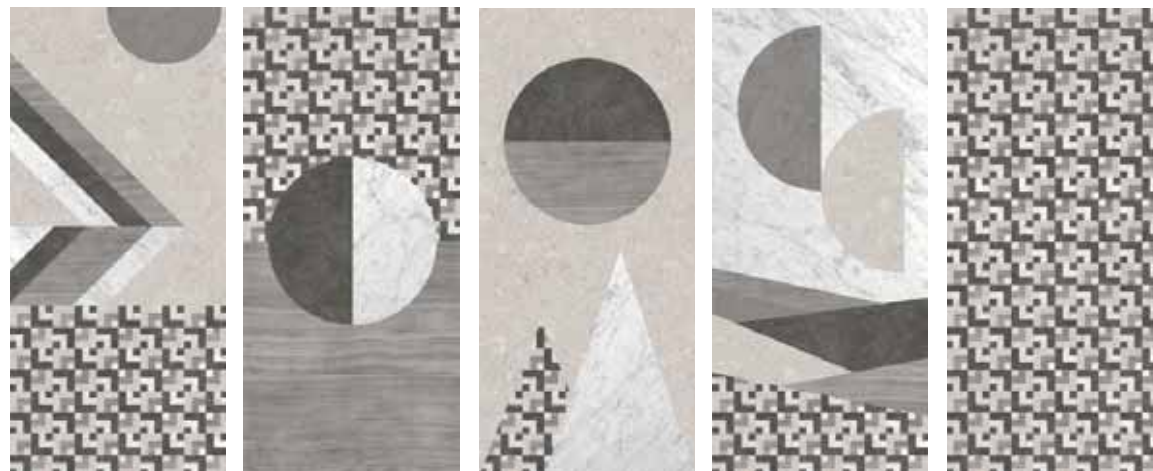
BEAUTY collection

PINK



SCBE120260PA SCBE120260PB SCBE120260PC SCBE120260PD SCBE120260PE

GREY



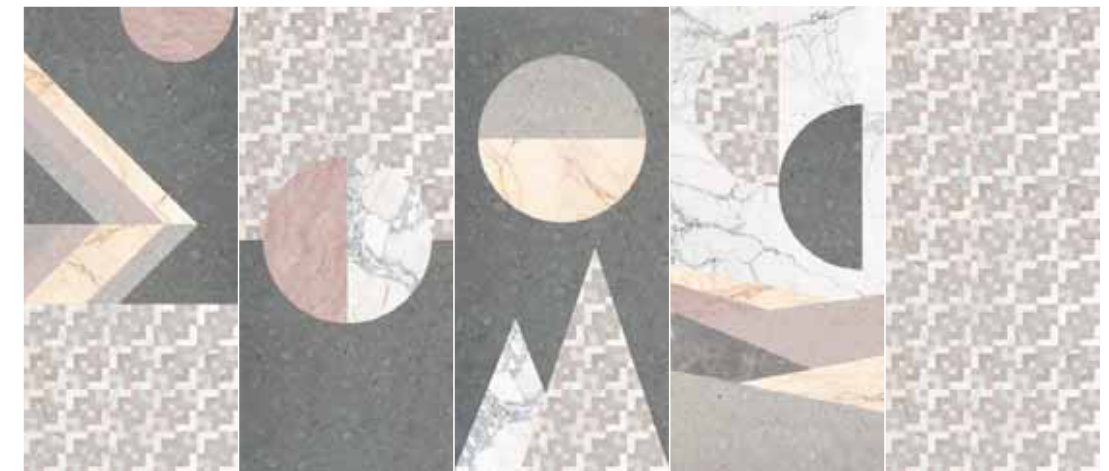
SCBE120260GA SCBE120260GB SCBE120260GC SCBE120260GD SCBE120260GE

ITALIAN
MARBLES

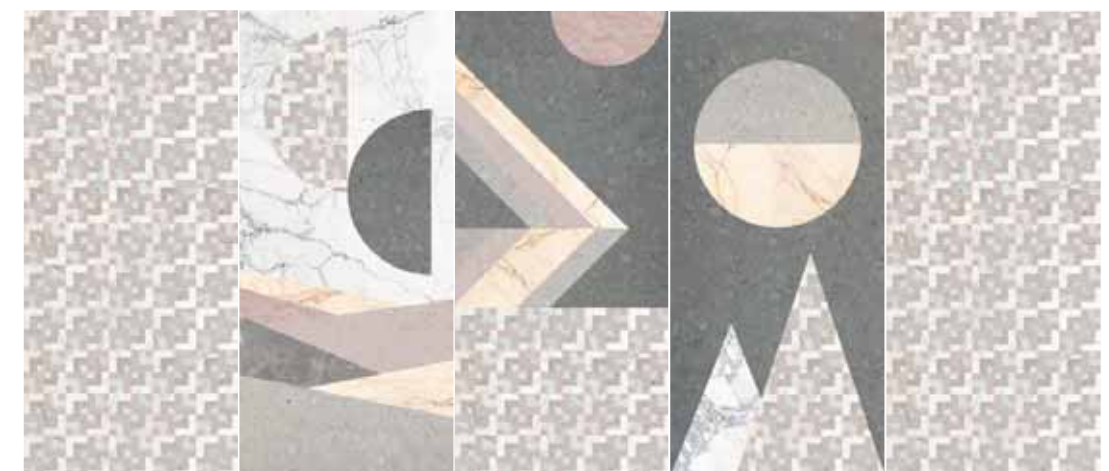


SCBE120260MIA SCBE120260MIB SCBE120260MIC SCBE120260MID SCBE120260MIE

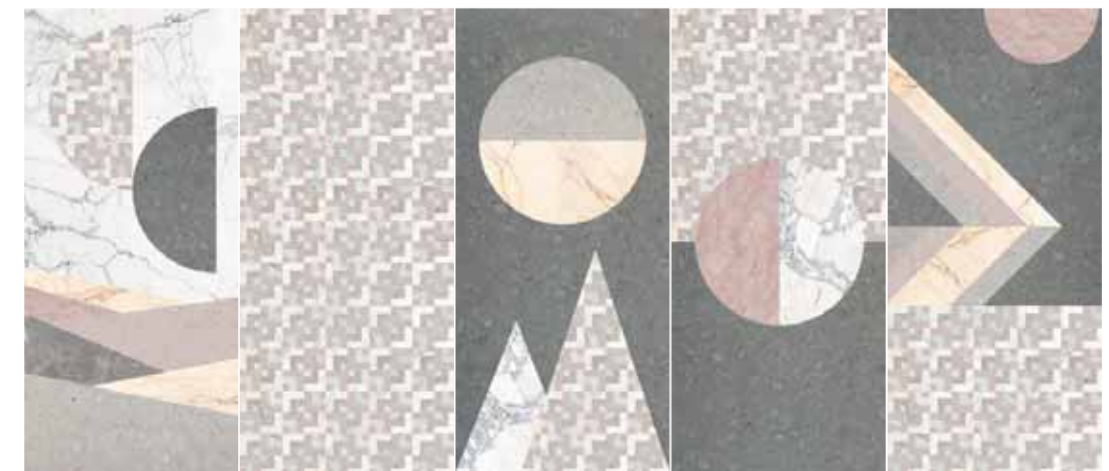
Schemi di posa / Laying systems



A B C D E



E D A C E



D E C B A

S19

IT/ Schemi di posa validi anche per le altre versioni colore del programma "Beauty".
ENG/ Laying patterns also valid for the other color versions of the "Beauty" program.

HANDCRAFTED

IT

Moderne miscele di argille pure e pigmenti naturali per una materia che non vuole rinunciare all'artigianalità dell'estrusione per trafilatura e alle esclusive lavorazioni superficiali. Un flusso di argille umide che, spinto dalle sapienti regolazioni dell'artigiano, si compatta in un infinito piano plastico modellato e sagomato da rulli e fustelle.

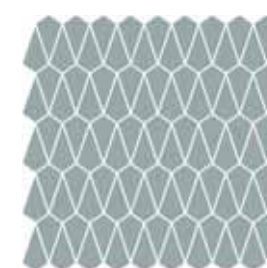
Il risultato è un pezzo sempre diverso l'uno dall'altro, caratterizzato da piccole differenze estetiche che si fondono in un pavimento e rivestimento unico. La produzione artigianale conferisce caratteristiche estetiche particolari diverse da quelle ottenibili da processi produttivi industriali che ne fanno una scelta di pregio per ambienti esclusivi.

ENG

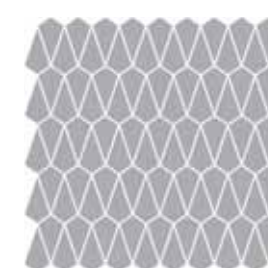
Modern mixtures of pure clays and natural pigments for a material that does not want to renounce to the craftsmanship of extruder by extruder and to the exclusive superficial workings. A flow of wet clays that, driven by the skilled craftsman regulations, is compacted into an infinite plastic floor molded and shaped by rollers and dies.

The result is a piece that is always different from one another, characterized by small aesthetic differences that merge into a unique floor and wall covering. The handicraft production confers particular aesthetic characteristics different from those obtainable from industrial production processes that make it a prestigious choice for exclusive environments.

KITE



SCKI3030C



SCKI3030I

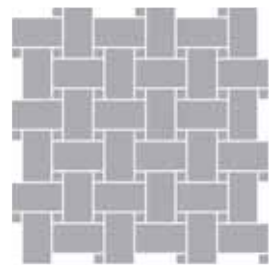
30x30
12"x12"



TWIST



SCTW3030C



SCTW3030I

30x30
12"x12"



Gamma Due
Scenarios 2019
© Gamma Due S.p.A.

Headquarter:
Via Mosca, 1
41049 Sassuolo, MO - Italy
T. +39 0536.86.74.11
E. info@gammadue.com
gammadue.com
PI/CF 00831670369

Project by: D-SEGHOSTUDIO
di Davide Tonelli
Art Direction: Davide Tonelli
E. : d.tonelli@d-segno.com
T. : +39 348 8744890

IT/ Come si possono affrontare le nuove sfide che ci aspettano sul mercato senza uniformarci passivamente a progetti fotocopia privi d'identità? La risposta è nella ricerca.

Una ampia raccolta di materiali e il loro ri-uso in nuove e inaspettate letture aiuta ad aggirare i clichè più diffusi.

Scenarios 19 si rivela come uno strumento con cui creare delle opportunità, una piattaforma per il dialogo tra creatività e società.

ENG/ How can we face the new challenges that await us on the market without passively conforming to photocopy projects without identity? The answer is in the research.

A large collect of matters and their “re-use” in new and unexpected readings helps to get around the most common clichès. Scenarios 19 reveals itself as a tool with which to create opportunities, a platform for dialogue between creativity and society.

Davide Tonelli