



**CERSAIE**

Bologna - Italy

# ORNAMENTA®

**News 2019**

## New releases

PIGMENTS / PL(A)YWOOD  
CITYSCAPE / MANUFATTO  
DÉCOR / I'M. / PTTRN / HUES

## News 2019



Pad. 26  
Stand B-123  
Bologna  
23-27/09.2019

Un progetto a cura di  
A project by  
D-SEGNO STUDIO

D-Segno Studio fondato  
da Davide Tonelli a Fiorano  
Modenese nel 2016 si  
occupa di Product Design,  
Art Direction, progettazio-  
ne di interni e allestimenti.

D-Segno Studio founded  
by Davide Tonelli in Fiorano  
Modenese in 2016, delivers  
projects for products & in-  
terior design, Art Direction  
and design installations.

ORNAMENTA®  
News 2019

Via Mosca, 1  
41049 Sassuolo  
(MO) - Italy

+39 0536.86.74.11  
info@ornamenta.com  
ornamenta.com  
PI/CF 00831670369



**News 2019**  
INDEX

**Benvenuto!**  
Per scoprire i contenuti delle nuove collezioni ORNAMENTA®, usa o scarica l'app. Pinterest e scansiona il Pincode.

**Welcome!**  
To discover the contents of the new ORNAMENTA® collections, use or download the app. Pinterest and scan the Pincode.

1. Apri Pinterest sul tuo smartphone, clicca sull'icona della fotocamera che trovi nella parte superiore della barra di ricerca e consenti l'accesso all'app alla tua fotocamera.
2. Avvicina il tuo telefono al Pincode assicurandoti di inquadrare i punti colorati.
3. I punti colorati sono in movimento.
4. Sei pronto a scoprire i contenuti esclusivi delle nuove collezioni Fio. che potrai salvare nelle tue bacheche.

1. Open Pinterest on your smartphone, click on the camera icon at the top of the search bar and allow access to the app to your camera.
2. Bring your phone close to the Pincode making sure you frame the colored dots.
3. The colored dots are moving.
4. You are ready to discover the exclusive contents of the new Fio collections. that you can save on your message boards.

|   | PAGES |
|---|-------|
| <b>PIGMENTS</b> <small>60x60</small> 6 COLORS - 2 DESIGNS           | 6     |
| <b>PL(A)YWOOD</b> <small>60x60</small> 6 COLORS - 3 DESIGNS         | 12    |
| <b>CITYSCAPE</b> <small>60x60</small> 4 COLORS - 3 SIZES            | 18    |
| <b>I'M.</b> <small>60x60</small> A MARBLE PROGRAM OF 3 SURFACES     | 24    |
| <b>MANUFATTO</b> <small>7,5x30</small> 6 NEW COLOURS - 2 SHAPES     | 30    |
| <b>DÉCOR</b> <small>Ø 23</small> 6 DESIGNS - 6 PLAIN COLOURS        | 36    |
| <b>PTTRN</b> <small>12x60</small> 4 COLOURS - 5 DECORS - 2 VARIANTS | 42    |
| <b>HUES</b> <small>Ø 11 - 7,5x15</small> 4 COLOURS - 2 SHAPES       | 48    |
| <b>CREDITS</b>  | 54    |



PG6060CI CINAMMON 60x60 | 24"x24" FLOOR

## PIGMENTS

MOUNTAIN LAKE  
60x60 | 24"x24"



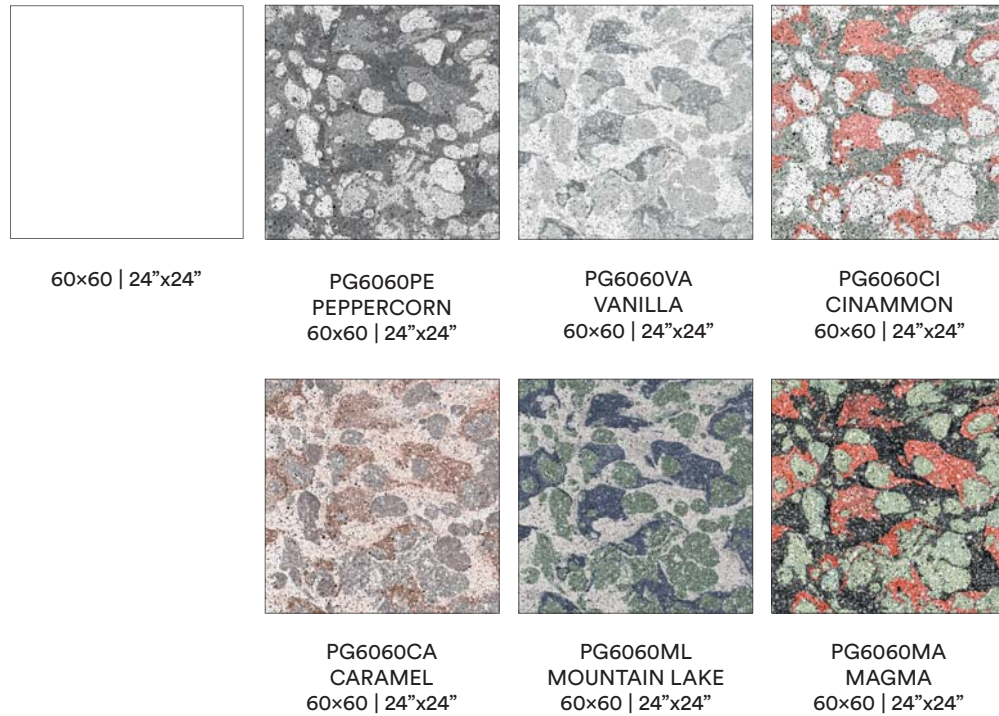
PG6060ML MOUNTAIN LAKE 60x60 | 24"x24" FLOOR  
MAN7530BND BLUE NIGHT DIAMANTATO 7,5x30 | 3"x12" WALL

Una superficie composta da varie miscele di graniti e marmi a grana fine e micro, colorata con pigmenti digitali di alta qualità e realizzata con caratteristiche forme sferoidali. Un materiale ad alto potenziale estetico che continua l'onda lunga del successo del trend "Terrazzo".

A surface composed of various mixtures of granites and marbles in fine grains and micro grains, colored with top quality digital pigments and made with characteristic spheroidal shapes. A material with high aesthetic potential which continues the long wave of the success of the "Terrazzo" trend.

# PIGMENTS

60x60 | 24"x24"

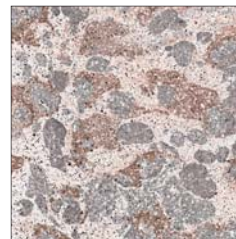


60x60 | 24"x24"

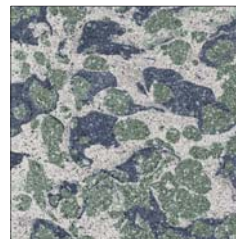
PG6060PE  
PEPPERCORN  
60x60 | 24"x24"

PG6060VA  
VANILLA  
60x60 | 24"x24"

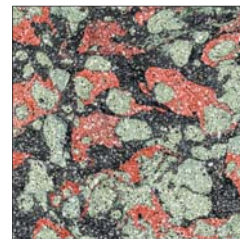
PG6060CI  
CINAMMON  
60x60 | 24"x24"



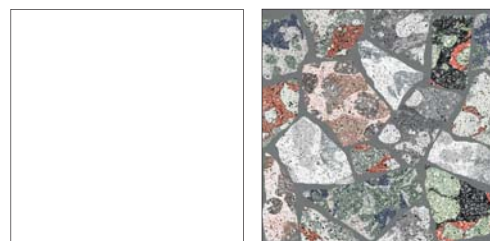
PG6060CA  
CARAMEL  
60x60 | 24"x24"



PG6060ML  
MOUNTAIN LAKE  
60x60 | 24"x24"



PG6060MA  
MAGMA  
60x60 | 24"x24"



60x60 | 24"x24"

PG6060F  
FRACTURED  
60x60 | 24"x24"

Puoi scegliere tra una gamma di colori diversi, alcuni in tono, altri deliberatamente in contrasto per ottenere superfici con diverse tonalità e un grande impatto visivo. Contaminazione come parola chiave: contaminazione di colori, materia, cultura e storia. Questo è Pigments, un nuovo step Trend Terrazzo. Disponibile in un formato e sei colori.

You can choose between a range of different colours, some in tone, others deliberately in contrast to obtain surfaces with different shades and great visual impact. Contamination as a keyword: contamination of colours, matter, culture and history. This is Pigments, a new step in the Terrazzo Floor Trend. Available in one size and six colours.

# INFO TECH

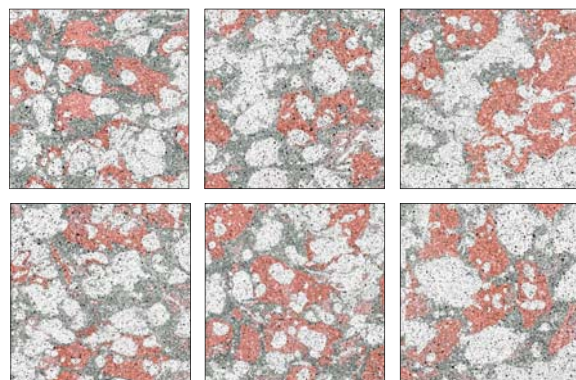
DECORS & TECH.FEATURES

## UNI EN14411:2016 App. GL. (Bla Group)

| NORMA STANDARD              | CARATTERISTICHE FEATURES                                       | VALORI LIMITI PREVISTI ESTABLISHED LIMITS   | VALORI RILEVATI MEASURED VALUES         |
|-----------------------------|--|---|---|
| ISO 10545.3<br>ASTM C373    | <b>Assorbimento d'acqua</b><br>Water absorption                | < 0,5%  | < 0,5%                                  |
| ISO 10545.9<br>ASTM C484    | <b>Resistenza agli sbalzi termici</b><br>Thermal shock         | Resistente<br>Resistant   | Resistente<br>Resistant                 |
| ISO 10545.13<br>ASTM C650   | <b>Resistenza agli attacchi chimici</b><br>Chemical resistance | Conforme<br>Complies with the standards   | Conforme<br>Complies with the standards |
| ISO 10545.7<br>ASTM 1027    | <b>Resistenza all'abrasione</b><br>Deep resistance             | 100 PEI 0 / 150 PEI I<br>600 PEI II / 750 - 1500 PEI III<br>2100 - 6000 - 12000 PEI IV<br>> 12000 PEI V | 750 - 1500 PEI III                      |
| ISO 10545.14<br>ASTM CC1378 | <b>Resistenza alle macchie</b><br>Stains Resistance            | ≥ Classe 3<br>≥ Class 3   | ≥ Classe 3<br>≥ Class 3                 |
| DIN 51130                   | <b>Resistenza allo scivolamento</b><br>Antislip value          |   | R10                                     |
| D-COF                       |  | > 0,42  | > 0,42                                  |
| ISO 10545.12<br>ASTM C1026  | <b>Resistenza al gelo</b><br>Frost resistant                   | Conforme<br>Complies with the standards   | Conforme<br>Complies with the standards |
| ISO 10545.4                 | <b>Resistenza alla rottura</b><br>Breaking strenght            | ≥ 28 N/mm <sup>2</sup>  | ≥ 28 N/mm <sup>2</sup>                  |

| FORMATO SIZE    | PZ-MQ PCS-SQM | PZ-SCAT. PCS-BOX | MQ-SCAT. SQM-BOX | SCAT.-PAL. BOX-PAL. | KG-SCAT. KG-BOX | KG-PAL. KG-PAL. | MQ-PAL. SQMS-PAL. |
|-----------------|---------------|------------------|------------------|---------------------|-----------------|-----------------|-------------------|
| 60x60 - 24"x24" | 0,36          | 3                | 1,08             | 32                  | 22,20           | 731             | 34,56             |

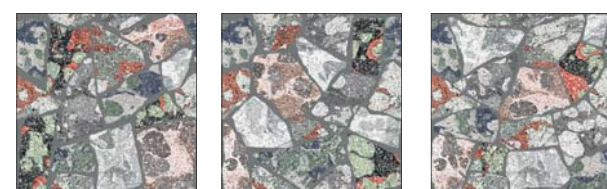
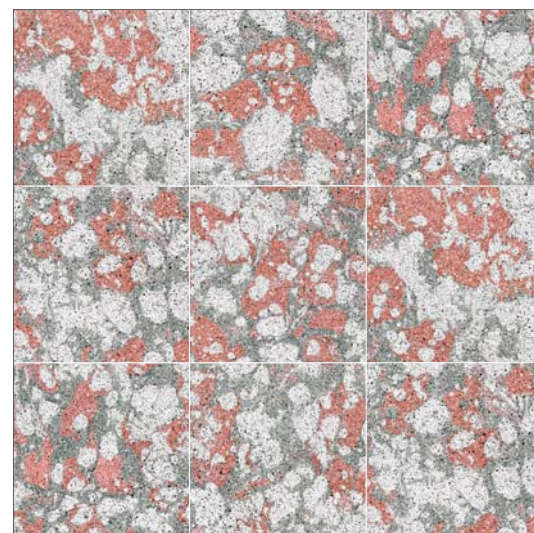
GRAPHIC MOVEMENT



6 GRAFICHE DIFFERENTI / 6 DIFFERENT DESIGNS

| Formato / Size  | Numero di grafiche / Number of designs |
|-----------------|--|
| 60x60   24"x24" | 6                                      |

LAYOUTS



3 GRAFICHE DIFFERENTI / 3 DIFFERENT DESIGNS

| Formato / Size                 | Numero di grafiche / Number of designs |
|--------------------------------|--|
| 60x60   24"x24"                | 6                                      |
| 60x60   24"x24"<br>(fractured) | 3                                      |



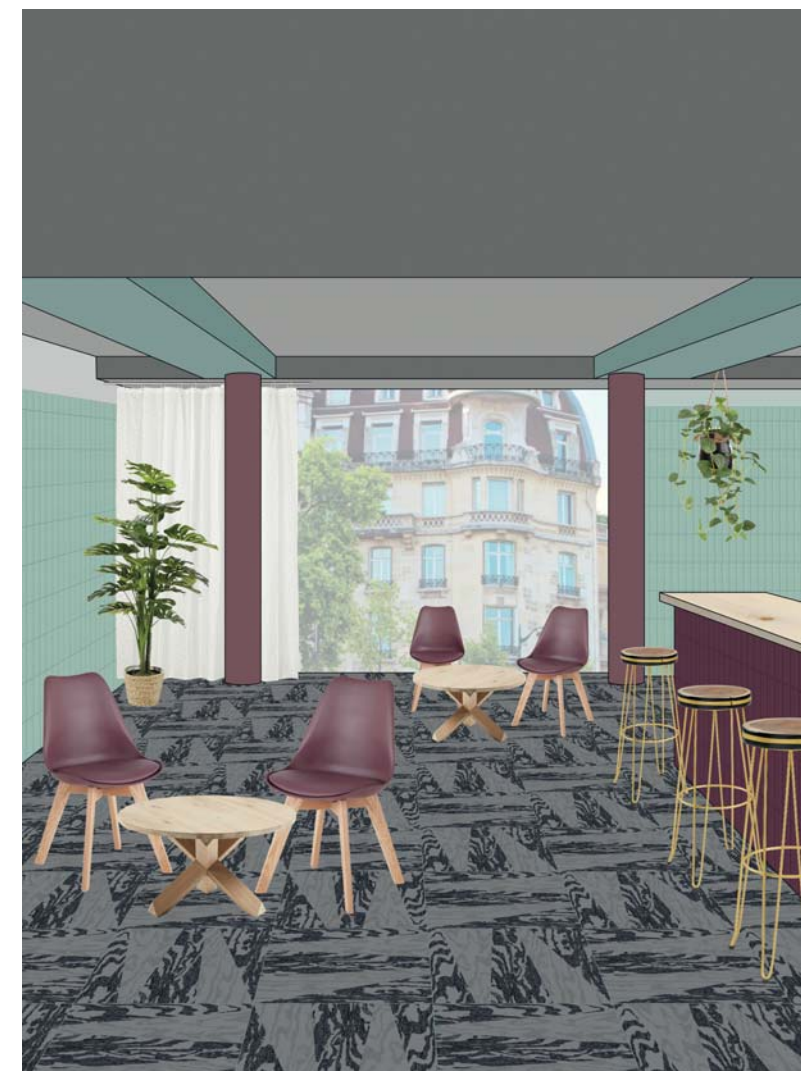
PG6060CA CAMEL 60x60 | 24"x24" FLOOR



PW6060C CREAM 60x60 | 24"x24" FLOOR  
PW6060GNF GREEN FRAGMENTS 60x60 | 24"x24" WALL

## PL(A)YWOOD

THUNDER GRAY DIAGONAL  
60x60 | 24"x24"



PW6060TGD THUNDER GRAY DIAGONAL 60x60 | 24"x24" FLOOR  
MAN7530BUL BURGUNDY LISCIO 7,5x30 | 3"x12" WALL

Un legno artistico, in grado di coniugare tradizione e contemporaneità creando quinte grafiche e tappeti inaspettati mediante la componibilità dei moduli della collezione. Uno stile giovane e contemporaneo caratterizzato da materie e colori coordinati in una palette equilibrata.

An artistic wood, able to combine tradition and modernity, creating graphic backdrops and unexpected rugs through the modularity of the modules of the collection. A young and contemporary style characterized by coordinated materials and colors in a balanced palette.

# PL(A)YWOOD

60x60 | 24"x24"



60x60 | 24"x24"

Un' interazione tra lo strato superiore e il legno sottostante sovrapponendo le venature del legno con campiture di colore per permettere al prodotto di raggiungere una nuova apparenza andando a colmare la mancanza di colore che percepiamo, creando nuove modalità d'uso. Disponibile in 3 moduli: plain, diagonal e fragments.

An interaction between the top layer and the underlying wood by overlapping the wood grain with colored backgrounds to allow the product to reach a new appearance by filling the lack of color that we feel and creating new ways of use. Available in 3 modules: plain, diagonal and fragments.



PW6060A  
ASH  
60x60 | 24"x24"



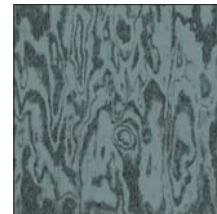
PW6060C  
CREAM  
60x60 | 24"x24"



PW6060H  
HONEY  
60x60 | 24"x24"



PW6060TG  
THUNDER GRAY  
60x60 | 24"x24"



PW6060S  
SAGE GREEN  
60x60 | 24"x24"



PW6060CC  
CAVERN CLAY  
60x60 | 24"x24"



PW6060AD  
ASH DIAGONAL  
60x60 | 24"x24"



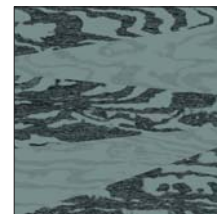
PW6060CD  
CREAM DIAGONAL  
60x60 | 24"x24"



PW6060HD  
HONEY DIAGONAL  
60x60 | 24"x24"



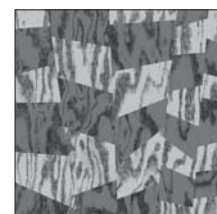
PW6060TGD  
THUNDER GRAY DIAGONAL  
60x60 | 24"x24"



PW6060SD  
SAGE GREEN DIAGONAL  
60x60 | 24"x24"



PW6060CCD  
CAVERN CLAY DIAGONAL  
60x60 | 24"x24"



PW6060GF  
GRAY FRAGMENTS  
60x60 | 24"x24"



PW6060GNF  
GREEN FRAGMENTS  
60x60 | 24"x24"



PW6060EF  
EARTH FRAGMENTS  
60x60 | 24"x24"

# INFO TECH

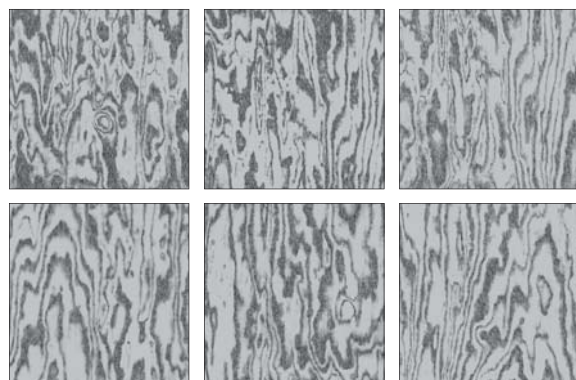
DECORS & TECH.FEATURES

UNI EN14411:2016 App. GL. (Bla Group)

| NORMA STANDARD              | CARATTERISTICHE FEATURES                                       | VALORI LIMITI PREVISTI ESTABLISHED LIMITS   | VALORI RILEVATI MEASURED VALUES         |                            |                        |                        |                          |
|-----------------------------|--|---|---|----------------------------|------------------------|------------------------|--------------------------|
| ISO 10545.3<br>ASTM C373    | <b>Assorbimento d'acqua</b><br>Water absorption                | < 0,5%  | < 0,5%                                  |                            |                        |                        |                          |
| ISO 10545.9<br>ASTM C484    | <b>Resistenza agli sbalzi termici</b><br>Thermal shock         | Resistente<br>Resistant   | Resistente<br>Resistant                 |                            |                        |                        |                          |
| ISO 10545.13<br>ASTM C650   | <b>Resistenza agli attacchi chimici</b><br>Chemical resistance | Conforme<br>Complies with the standards   | Conforme<br>Complies with the standards |                            |                        |                        |                          |
| ISO 10545.7<br>ASTM 1027    | <b>Resistenza all'abrasione</b><br>Deep resistance             | 100 PEI 0 / 150 PEI I<br>600 PEI II / 750 - 1500 PEI III<br>2100 - 6000 - 12000 PEI IV<br>> 12000 PEI V | 750 - 1500 PEI III                      |                            |                        |                        |                          |
| ISO 10545.14<br>ASTM CC1378 | <b>Resistenza alle macchie</b><br>Stains Resistance            | ≥ Classe 3<br>≥ Class 3   | ≥ Classe 3<br>≥ Class 3                 |                            |                        |                        |                          |
| DIN 51130                   | <b>Resistenza allo scivolamento</b><br>Antislip value          |   | R10                                     |                            |                        |                        |                          |
| D-COF                       |  | > 0,42  | > 0,42                                  |                            |                        |                        |                          |
| ISO 10545.12<br>ASTM C1026  | <b>Resistenza al gelo</b><br>Frost resistant                   | Conforme<br>Complies with the standards   | Conforme<br>Complies with the standards |                            |                        |                        |                          |
| ISO 10545.4                 | <b>Resistenza alla rottura</b><br>Breaking strenght            | ≥ 28 N/mm <sup>2</sup>  | ≥ 28 N/mm <sup>2</sup>                  |                            |                        |                        |                          |
| <b>FORMATO SIZE</b>         | <b>PZ-MQ PCS-SQM</b>   | <b>PZ-SCAT. PCS-BOX</b>   | <b>MQ-SCAT. SQM-BOX</b>                 | <b>SCAT.-PAL. BOX-PAL.</b> | <b>KG-SCAT. KG-BOX</b> | <b>KG-PAL. KG-PAL.</b> | <b>MQ-PAL. SQMS-PAL.</b> |
| 60x60 - 24"x24"             | 0,36   | 3   | 1,08                                    | 32                         | 22,20                  | 731                    | 34,56                    |



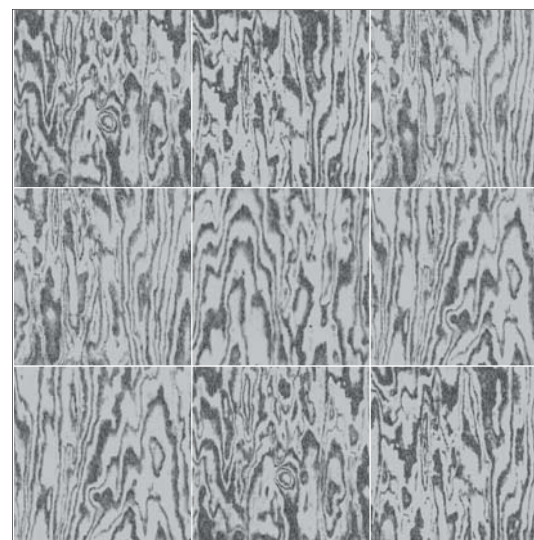
GRAPHIC MOVEMENT



6 GRAFICHE DIFFERENTI / 6 DIFFERENT DESIGNS

| Formato / Size  | Numero di grafiche / Number of designs |
|-----------------|--|
| 60x60   24"x24" | 6                                      |

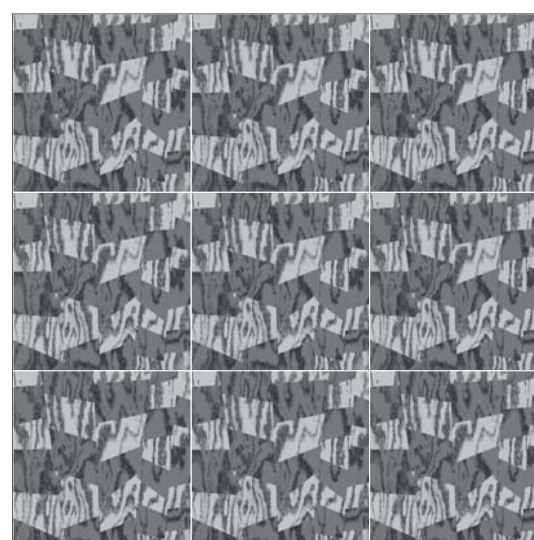
LAYOUTS



1 GRAFICA / 1 DESIGN



1 GRAFICA / 1 DESIGN



PW6060H HONEY 60x60 | 24"x24" FLOOR  
PW6060EF EARTH FRAGMENTS 60x60 | 24"x24" WALL



CS60120G GRIS 60x120 | 24"x48" FLOOR

CITYSCAPE

NOIR  
60x120 | 24"x48"



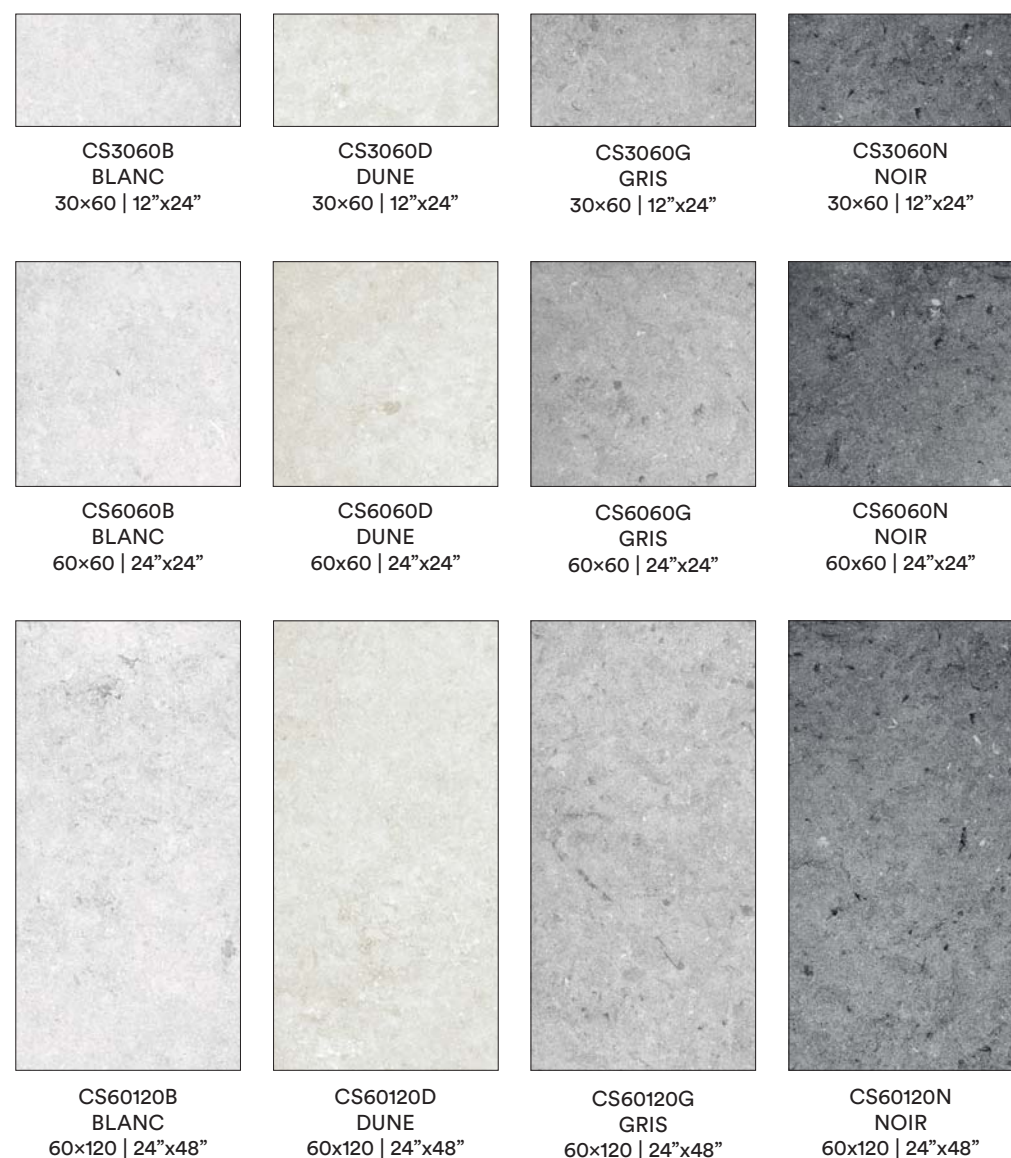
CS60120N NOIR 60x120 | 24"x48" FLOOR - WALL

Le persone cercano connessioni con la natura per contrastare gli effetti della loro vita sedentaria, trascorrendo molto tempo incollati agli schermi di cellulari sui social media poiché il nostro appetito per loro sembra insaziabile. Nella ricerca di una nuova vicinanza alla natura, nasce Cityscape, una collezione il cui obiettivo è quello di far dialogare la bellezza della pietra naturale riprodotta fedelmente in digitale ibridandola nel contesto sociale contemporaneo per renderla più fruibile.

People seek connections with nature to counteract the effects of their sedentary life, spending a great deal of time glued to the screens of their cell phones on social media as our appetite for them seems insatiable. In the search for a new closeness to nature, Cityscape was born, a collection whose goal is to bring together the beauty of natural stone faithfully reproduced in digital by hybridizing it into the contemporary social context to make it more accessible.

# CITYSCAPE

30x60 | 12"x24" - 60x60 | 24"x24" - 60x120 | 24"x48"



Cityscape è ispirata alla famosa pietra naturale Blu del Belgio, la cui superficie mostra i segni di una lavorazione di microsabbatura che va ad enfatizzarne l'essenza. Disponibile in 3 formati e 4 colorazioni in singola finitura.

Cityscape is inspired by the famous Blue Belgian natural stone, whose surface shows the signs of a micro-sandblasting process that emphasizes its essence. Available in 3 sizes and 4 colors in single finish.

## TERRAZZO



## INFO TECH

DECORS & TECH.FEATURES

UNI EN14411:2016 App. GL. (Bla Group)

| NORMA STANDARD              | CARATTERISTICHE FEATURES                                       | VALORI LIMITI PREVISTI ESTABLISHED LIMITS   | VALORI RILEVATI MEASURED VALUES         |
|-----------------------------|--|---|---|
| ISO 10545.3<br>ASTM C373    | <b>Assorbimento d'acqua</b><br>Water absorption                | < 0,5%  | ≤ 0,5%                                  |
| ISO 10545.9<br>ASTM C484    | <b>Resistenza agli sbalzi termici</b><br>Thermal shock         | Resistente<br>Resistant   | Resistente<br>Resistant                 |
| ISO 10545.13<br>ASTM C650   | <b>Resistenza agli attacchi chimici</b><br>Chemical resistance | Conforme<br>Complies with the standards   | Conforme<br>Complies with the standards |
| ISO 10545.7<br>ASTM 1027    | <b>Resistenza all'abrasione</b><br>Deep resistance             | 100 PEI 0 / 150 PEI I<br>600 PEI II / 750 - 1500 PEI III<br>2100 - 6000 - 12000 PEI IV<br>> 12000 PEI V | Noir PEI III<br>Altri colori PEI IV     |
| ISO 10545.14<br>ASTM CC1378 | <b>Resistenza alle macchie</b><br>Stains Resistance            | ≥ Classe 3<br>≥ Class 3   | ≥ Classe 5<br>≥ Class 5                 |
| DIN 51130<br>D-COF          | <b>Resistenza allo scivolamento</b><br>Antislip value          | > 0,42  | R10<br>≥ 0,42                           |
| ISO 10545.12<br>ASTM C1026  | <b>Resistenza al gelo</b><br>Frost resistant                   | Conforme<br>Complies with the standards   | Conforme<br>Complies with the standards |
| ISO 10545.4                 | <b>Resistenza alla rottura</b><br>Breaking strenght            | ≥ 28 N/mm <sup>2</sup>  | ≥ 35 N/mm <sup>2</sup>                  |

| FORMATO SIZE     | PZ-MQ PCS-SQM | PZ-SCAT. PCS-BOX | MQ-SCAT. SQM-BOX | SCAT.-PAL. BOX-PAL. | KG-SCAT. KG-BOX | KG-PAL. KG-PAL. | MQ-PAL. SQMS-PAL. |
|------------------|---------------|------------------|------------------|---------------------|-----------------|-----------------|-------------------|
| 30x60 - 12"x24"  | 0,18          | 6                | 1,08             | 60                  | 22,20           | 1352            | 64,80             |
| 60x60 - 24"x24"  | 0,36          | 3                | 1,08             | 40                  | 24,00           | 960             | 43,20             |
| 60x120 - 24"x48" | 0,76          | 2                | 1,44             | 30                  | 32,00           | 960             | 43,20             |

LAYOUTS

GRIS 30x60 | 12"x24"



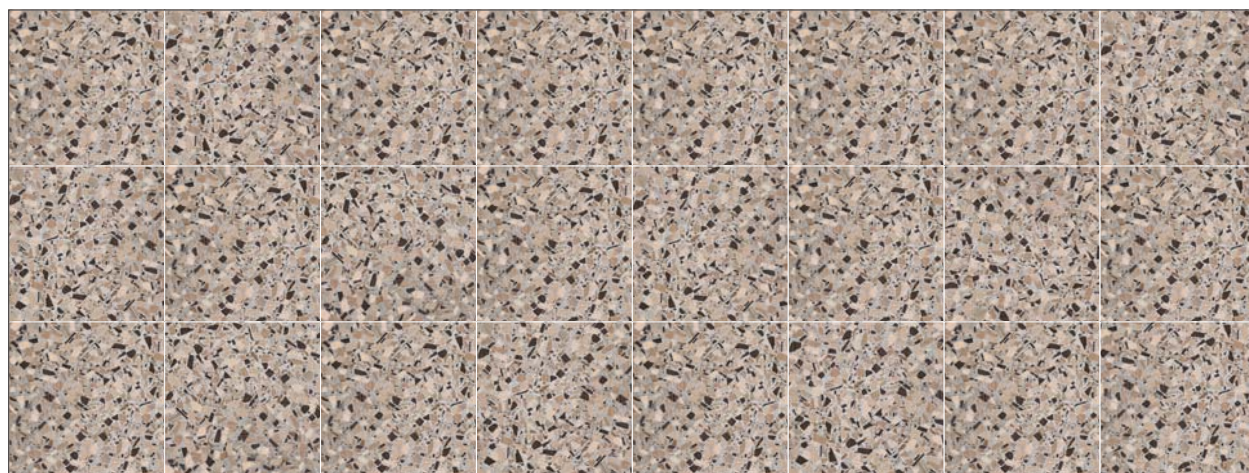
GRIS 60x60 | 24"x24"



GRIS 60x120 | 24"x48"



TERRAZZO GRIS MULTICOLOR 60x60 | 24"x24"



GRAPHIC MOVEMENT

| Formato / Size   | Numero di grafiche / Number of designs |
|------------------|--|
| 30x60   12"x24"  | 20                                     |
| 60x60   24"x24"  | 20                                     |
| 60x120   24"x48" | 10                                     |



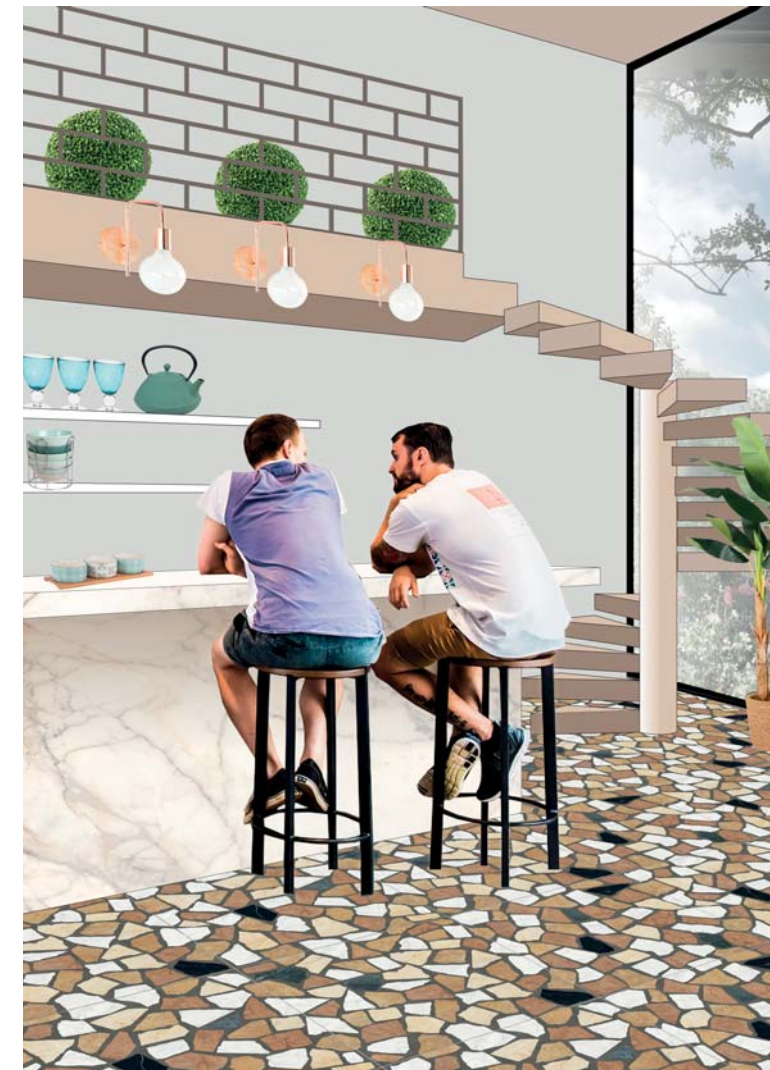
CS6060TGM TERRAZZO GRIS MULTICOLOR 60x60 | 24"x24" FLOOR  
 CS60120G GRIS 60x120 | 24"x48" WALL

IM6060M MISMATCHED 60x60 | 24"x24" FLOOR  
 MAN7530PGL PARK GREEN LISCIO 7,5x30 | 3"x12" WALL



I'M.

MULTICOLOUR  
 60x60 | 24"x24"



PA6060MC MULTICOLOUR 60x60 | 24"x24" FLOOR  
 MF120120P METAFISICO POLISHED 120x120 | 48"x48" WALL

Una collezione di tendenza che gioca con i colori dei famosi marmi italiani per ottenere un'estetica fresca e moderna con gli interni. Un gioco intenzionale di trame e forme triangolari per creare una superficie colorata che non passa inosservata.

A trendy collection that plays with the colours of famous Italian Marbles to achieve a cool and modern aesthetics with the interiors. An intentional game of textures and triangular shapes to make a colored surface that does not go unnoticed.

© 2019 - ORNAMENTA® All Rights Reserved

# I'M.

60x60 | 24"x24"

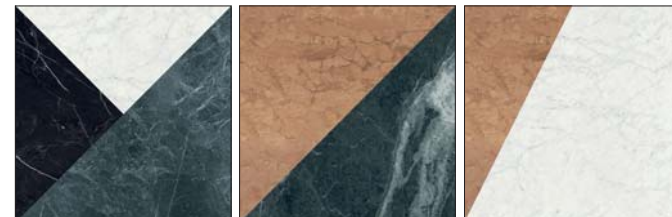
12 DESIGNS



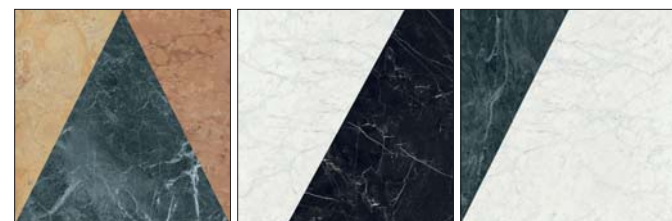
60x60 | 24"x24"  
MISMATCHED

1 SOLO CODICE, SINGOLI SOGGETTI NON ORDINABILI, INSCATOLAMENTO RANDOM MISTO.

1 CODE, SINGLE SUBJECTS CANNOT BE ORDERED SEPARATELY, MIXED RANDOM BOXING.



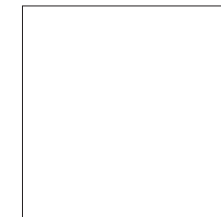
IM6060M  
MISMATCHED  
60x60 | 24"x24"



I'm. Marmi italiani. Piastrelle in marmo multicolore assemblate in modo disordinato per garantire che il tuo spazio si distingua dagli altri. L'uso di eleganti marmi italiani come Verde Alpi, Rosso Verona, Bianco Carrara, Giallo Reale, Nero di Porto Venere "assemblati" in diverse forme manda un messaggio molto potente: artigianato e creatività hanno ancora un ruolo chiave negli interni.

I'm. Italian Marbles. Randomly multi-colour marble tiles to ensure your space stands out from the others. The use of elegant Italian marbles Verde Alpi, Rosso Verona, Bianco Carrara, Giallo Reale, Nero di Porto Venere "puzzled" into different shapes sends a very powerful message: craftsmanship and creativity have still a key role in interior.

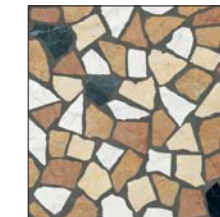
## PALLADIANA & TERRAZZO



60x60 | 24"x24"  
PALLADIANA



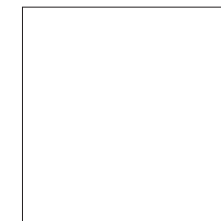
PA6060MC  
MULTICOLOUR  
60x60 | 24"x24"



TE6060SM  
MINT  
60x60 | 24"x24"



TE6060B  
BLUSH  
60x60 | 24"x24"



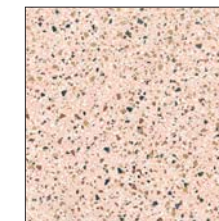
60x60 | 24"x24"  
TERRAZZO



TE6060G  
GREY  
60x60 | 24"x24"



TE6060SM  
MINT  
60x60 | 24"x24"



TE6060B  
BLUSH  
60x60 | 24"x24"

## INFO TECH

DECORS & TECH.FEATURES

### UNI EN14411:2016 App. GL. (Bla Group)

| NORMA STANDARD              | CARATTERISTICHE FEATURES                                       | VALORI LIMITI PREVISTI ESTABLISHED LIMITS   | VALORI RILEVATI MEASURED VALUES         |
|-----------------------------|--|---|---|
| ISO 10545.3<br>ASTM C373    | <b>Assorbimento d'acqua</b><br>Water absorption                | < 0,5%  | < 0,5%                                  |
| ISO 10545.9<br>ASTM C484    | <b>Resistenza agli sbalzi termici</b><br>Thermal shock         | Resistente<br>Resistant   | Resistente<br>Resistant                 |
| ISO 10545.13<br>ASTM C650   | <b>Resistenza agli attacchi chimici</b><br>Chemical resistance | Conforme<br>Complies with the standards   | Conforme<br>Complies with the standards |
| ISO 10545.7<br>ASTM 1027    | <b>Resistenza all'abrasione</b><br>Deep resistance             | 100 PEI 0 / 150 PEI I<br>600 PEI II / 750 - 1500 PEI III<br>2100 - 6000 - 12000 PEI IV<br>> 12000 PEI V | 750 - 1500 PEI III                      |
| ISO 10545.14<br>ASTM CC1378 | <b>Resistenza alle macchie</b><br>Stains Resistance            | ≥ Classe 3<br>≥ Class 3   | ≥ Classe 3<br>≥ Class 3                 |
| DIN 51130<br>D-COF          | <b>Resistenza allo scivolamento</b><br>Antislip value          | > 0,42  | R10<br>> 0,42                           |
| ISO 10545.12<br>ASTM C1026  | <b>Resistenza al gelo</b><br>Frost resistant                   | Conforme<br>Complies with the standards   | Conforme<br>Complies with the standards |
| ISO 10545.4                 | <b>Resistenza alla rottura</b><br>Breaking strenght            | ≥ 28 N/mm <sup>2</sup>  | ≥ 28 N/mm <sup>2</sup>                  |

| FORMATO SIZE    | PZ-MQ PCS-SQM | PZ-SCAT. PCS-BOX | MQ-SCAT. SQM-BOX | SCAT.-PAL. BOX-PAL. | KG-SCAT. KG-BOX | KG-PAL. KG-PAL. | MQ-PAL. SQMS-PAL. |
|-----------------|---------------|------------------|------------------|---------------------|-----------------|-----------------|-------------------|
| 60x60 - 24"x24" | 0,36          | 3                | 1,08             | 32                  | 22,20           | 731             | 34,56             |

GRAPHIC MOVEMENT



12 GRAFICHE DIFFERENTI / 12 DIFFERENT DESIGNS

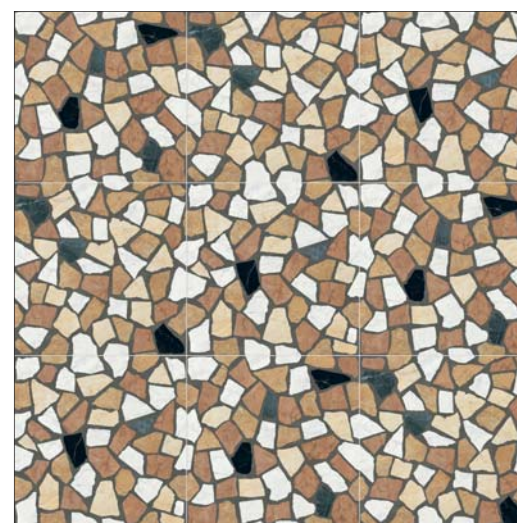
| Formato / Size  | Numero di grafiche / Number of designs |
|-----------------|--|
| 60x60   24"x24" | 12                                     |

LAYOUTS

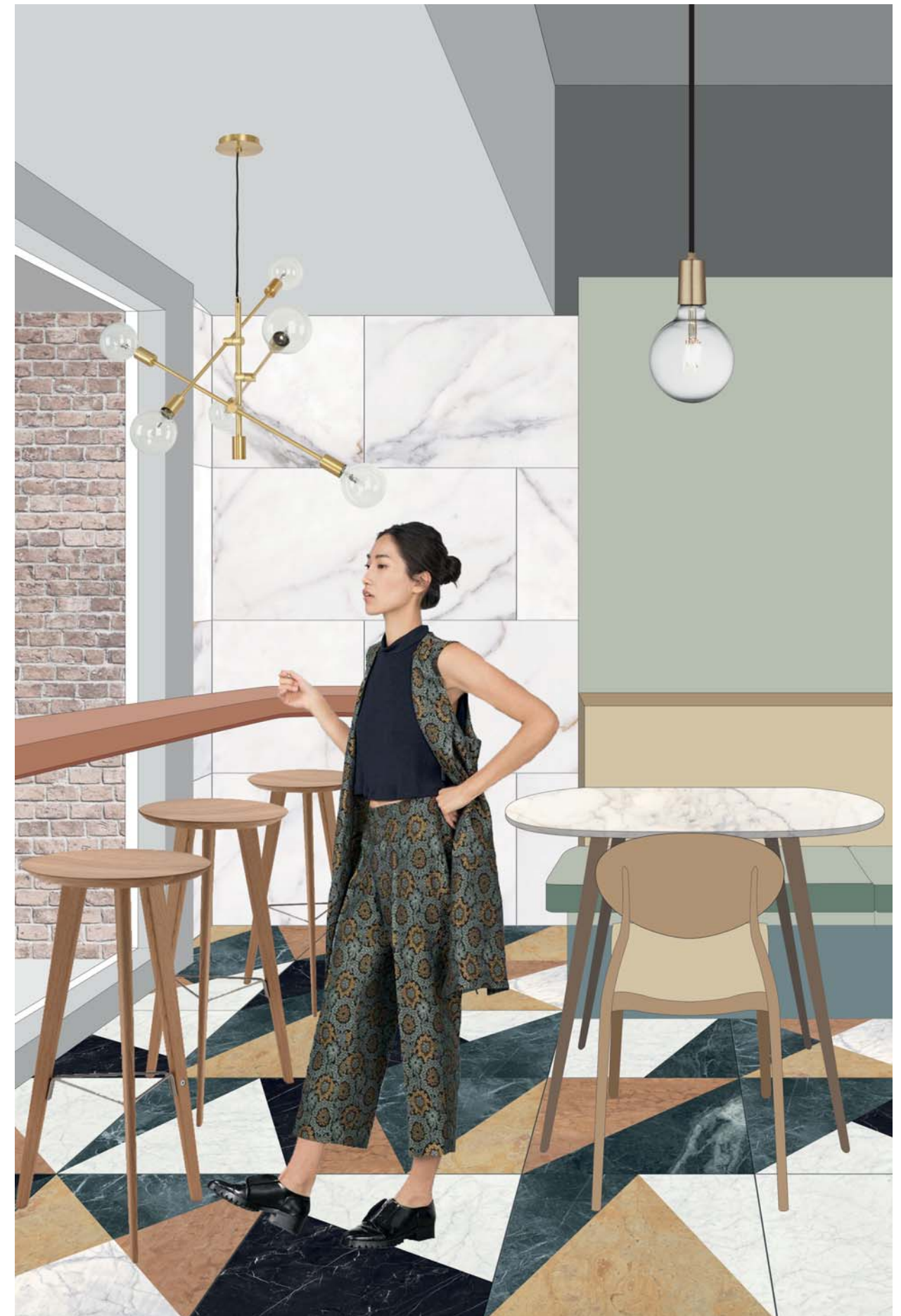


3 GRAFICHE DIFFERENTI / 3 DIFFERENT DESIGNS

| Formato / Size  | Numero di grafiche / Number of designs |
|-----------------|--|
| 60x60   24"x24" | 3                                      |



1 GRAFICA / 1 DESIGN

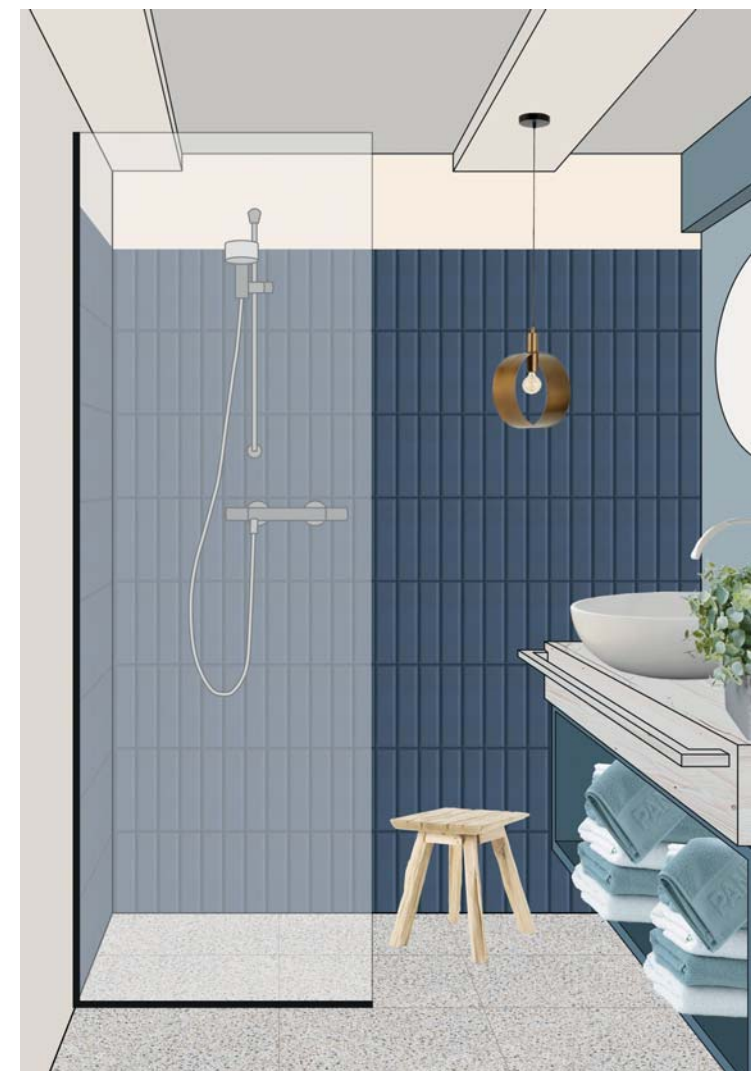


IM6060M MISMATCHED 60x60 | 24"x24" FLOOR  
MF60120P METAFISICO POLISHED 60x120 | 24"x48" WALL



### MANUFATTO

BLUE NIGHT DIAMANTATO  
7,5x30 | 3"x12"



TE6060G GREY 60x60 | 24"x24" FLOOR  
MAN7530BND BLUE NIGHT DIAMANTATO 7,5x30 | 3"x12" WALL



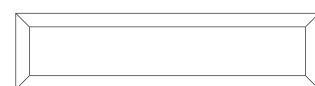
Il Mattoncino 7,5x30 cm - 3"x12" lucido presentato nel 2018 declinato qui in sei nuovi toni nella doppia forma liscia e diamantata.

The polished 7.5x30 cm - 3 "x12" brick launched in 2018 here presented in six new tones in the double smooth and diamond shape.



# MANUFATTO

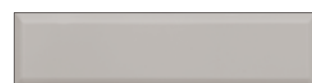
7,5x30 | 3"x12"



DIAMANTATO  
7,5x30 | 3"x12"



MAN7530CAD  
CANTALOUPE DIAMANTATO  
7,5x30 | 3"x12"



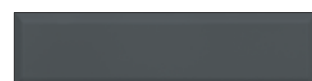
MAN7530CGD  
COTTON GREY DIAMANTATO  
7,5x30 | 3"x12"



MAN7530PGD  
PARK GREEN DIAMANTATO  
7,5x30 | 3"x12"



MAN7530BUD  
BURGUNDY DIAMANTATO  
7,5x30 | 3"x12"



MAN7530OSD  
OCEAN STORM DIAMANTATO  
7,5x30 | 3"x12"



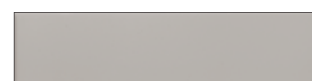
MAN7530BND  
BLUE NIGHT DIAMANTATO  
7,5x30 | 3"x12"



LISCIO  
7,5x30 | 3"x12"



MAN7530CAL  
CANTALOUPE LISCIO  
7,5x30 | 3"x12"



MAN7530CGL  
COTTON GREY LISCIO  
7,5x30 | 3"x12"



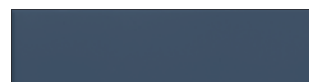
MAN7530PGL  
PARK GREEN LISCIO  
7,5x30 | 3"x12"



MAN7530BUL  
BURGUNDY LISCIO  
7,5x30 | 3"x12"



MAN7530OSL  
OCEAN STORM LISCIO  
7,5x30 | 3"x12"



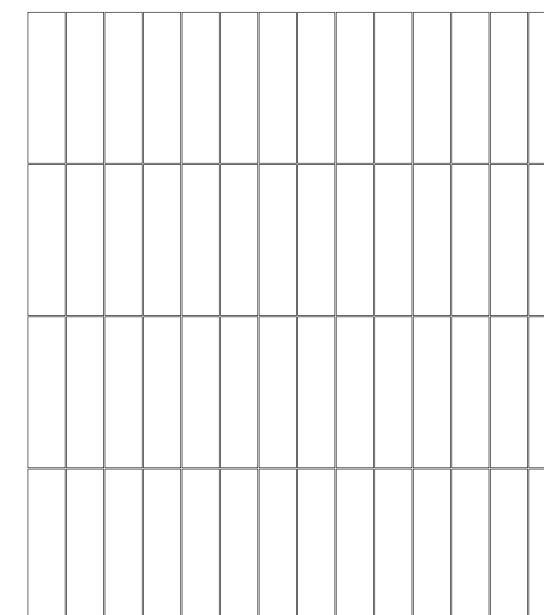
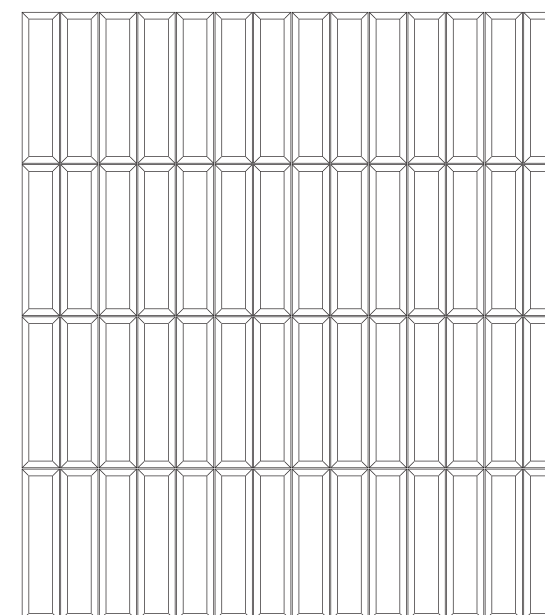
MAN7530BNL  
BLUE NIGHT LISCIO  
7,5x30 | 3"x12"

Questi sei toni sono destinati a produrre il maggiore impatto nel 2020 e incarnano uno stato d'animo lungimirante e un ottimismo quasi utopico per il futuro. C'è un'ispirazione esplicita dalla natura in tonalità sofisticate, colorate e ricche.

These six tones are set to make the biggest impact in 2020 and embody a forward-thinking mood and an almost utopian optimism for future. There is an explicit inspiration from nature in shades that are sophisticated, colourful, and rich.

# INFO TECH

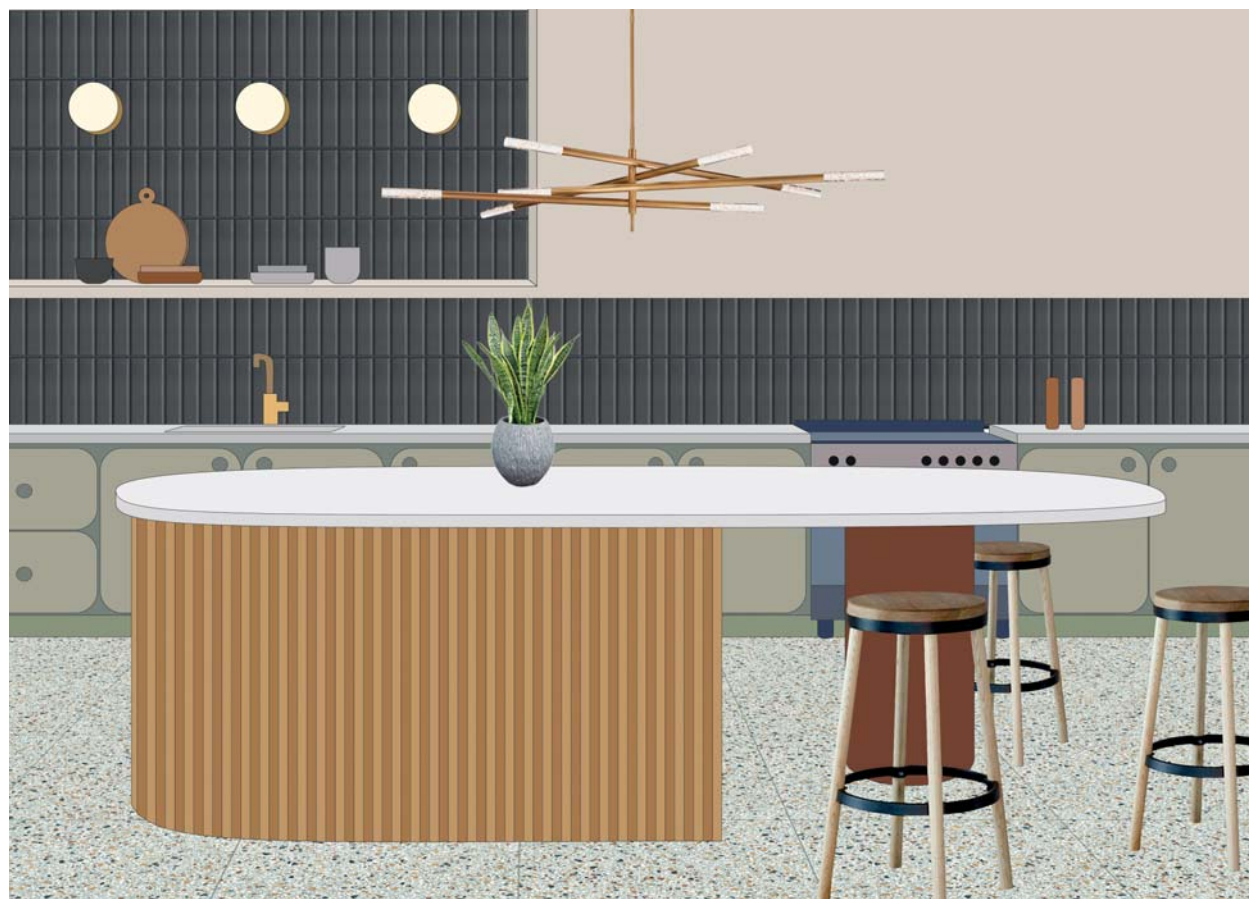
DECORS & TECH.FEATURES



## UNI EN14411:2016 App. L. (BIII Group)

| NORMA STANDARD              | CARATTERISTICHE FEATURES                                       | VALORI LIMITI PREVISTI ESTABLISHED LIMITS   | VALORI RILEVATI MEASURED VALUES         |
|-----------------------------|--|---|---|
| ISO 10545.3<br>ASTM C373    | <b>Assorbimento d'acqua</b><br>Water absorption                | > 10%   | 17,8%                                   |
| ISO 10545.9<br>ASTM C484    | <b>Resistenza agli sbalzi termici</b><br>Thermal shock         | Resistente<br>Resistant   | Resistente<br>Resistant                 |
| ISO 10545.13<br>ASTM C650   | <b>Resistenza agli attacchi chimici</b><br>Chemical resistance | Conforme<br>Complies with the standards   | Conforme<br>Complies with the standards |
| ISO 10545.7<br>ASTM 1027    | <b>Resistenza all'abrasione</b><br>Deep resistance             | 100 PEI 0 / 150 PEI I<br>600 PEI II / 750 - 1500 PEI III<br>2100 - 6000 - 12000 PEI IV<br>> 12000 PEI V | Conforme<br>Complies with the standards |
| ISO 10545.14<br>ASTM CC1378 | <b>Resistenza alle macchie</b><br>Stains Resistance            | ≥ Classe 3<br>≥ Class 3   | ≥ Classe 5<br>≥ Class 5                 |
| ISO 10545.12<br>ASTM C1026  | <b>Resistenza al gelo</b><br>Frost resistant                   | Conforme<br>Complies with the standards   | Conforme<br>Complies with the standards |
| ISO 10545.4                 | <b>Resistenza alla rottura</b><br>Breaking strenght            | ≥ 28 N/mm <sup>2</sup>  | ≥ 28 N/mm <sup>2</sup>                  |

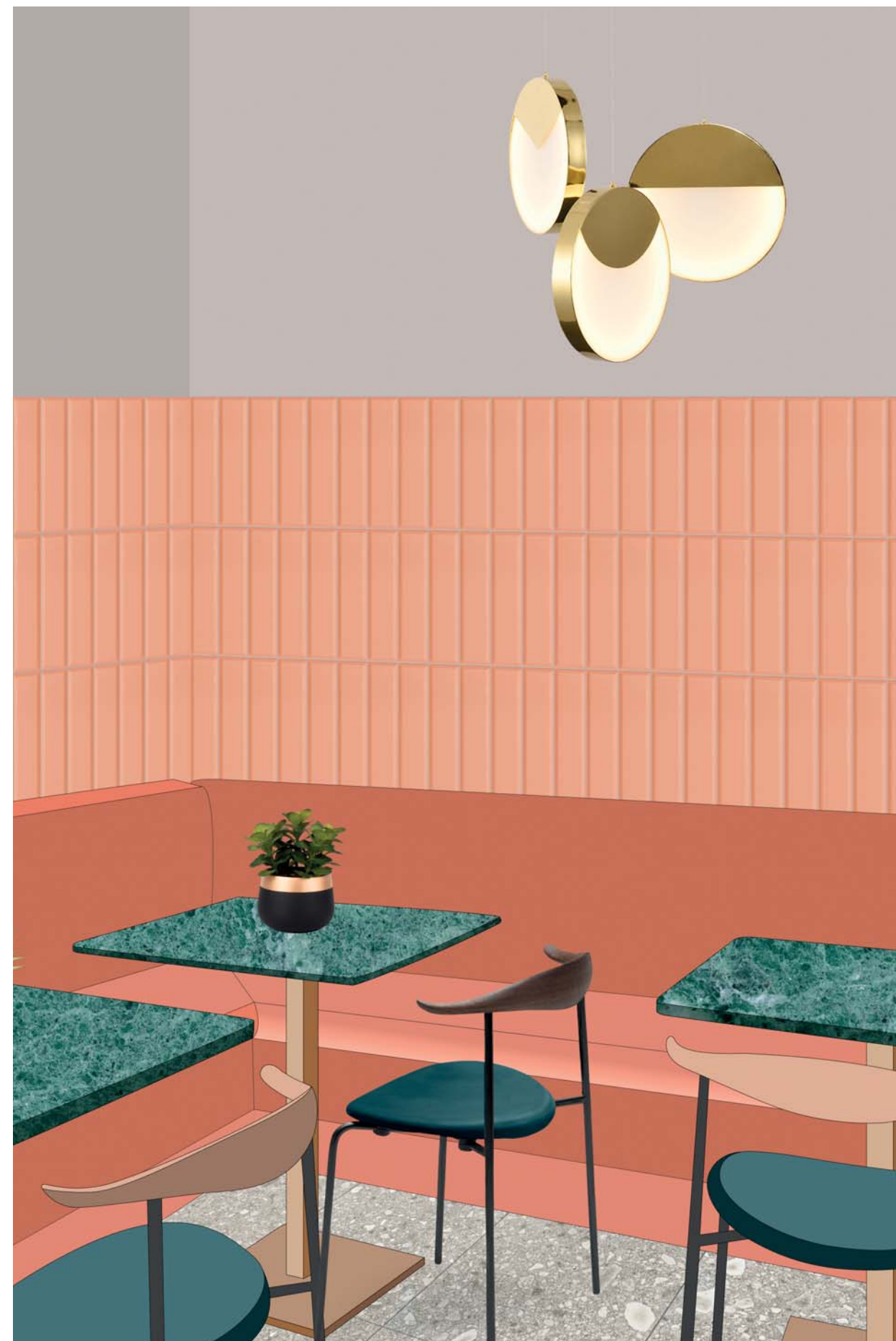
| FORMATO SIZE                 | PZ-MQ<br>PCS-SQM | PZ-SCAT.<br>PCS-BOX | MQ-SCAT.<br>SQM-BOX | SCAT.-PAL.<br>BOX-PAL. | KG-SCAT.<br>KG-BOX | KG-PAL.<br>KG-PAL. | MQ-PAL.<br>SQMS-PAL. |
|------------------------------|------------------|---------------------|---------------------|------------------------|--------------------|--------------------|----------------------|
| 7,5x30 - 3"x12" (liscio)     | 0,0225           | 22                  | 0,495               | 132                    | 7,137              | 962                | 65,34                |
| 7,5x30 - 3"x12" (diamantato) | 0,0225           | 18                  | 0,405               | 132                    | 6,847              | 923,8              | 53,46                |



TE6060SM MINT 60x60 | 24"x24" FLOOR  
MAN7530BND BLUE NIGHT DIAMANTATO 7,5x30 | 3"x12" WALL



TE6060B BLUSH 60x60 | 24"x24" FLOOR  
MAN7530CGL COTTON GREY LISCIO 7,5x30 | 3"x12" WALL



SL6060C STILE LIBERO CREAM 60x60 | 24"x24" FLOOR  
MAN7530CAD CANTALOUPE DIAMANTATO 7,5x30 | 3"x12" WALL

CS6060B BLANC 60x60 | 24"x24" FLOOR  
DE23PE PETAL Ø 23 | Ø 9" WALL



DÈCOR

MIX WHITE  
Ø 23 | Ø 9"



DE23W WHITE Ø 23 | Ø 9" FLOOR  
DE23W WHITE Ø 23 | Ø 9", DE23R ROSE Ø 23 | Ø 9", DE23PO POINTS Ø 23 | Ø 9", DE23PE PETAL Ø 23 | Ø 9" WALL

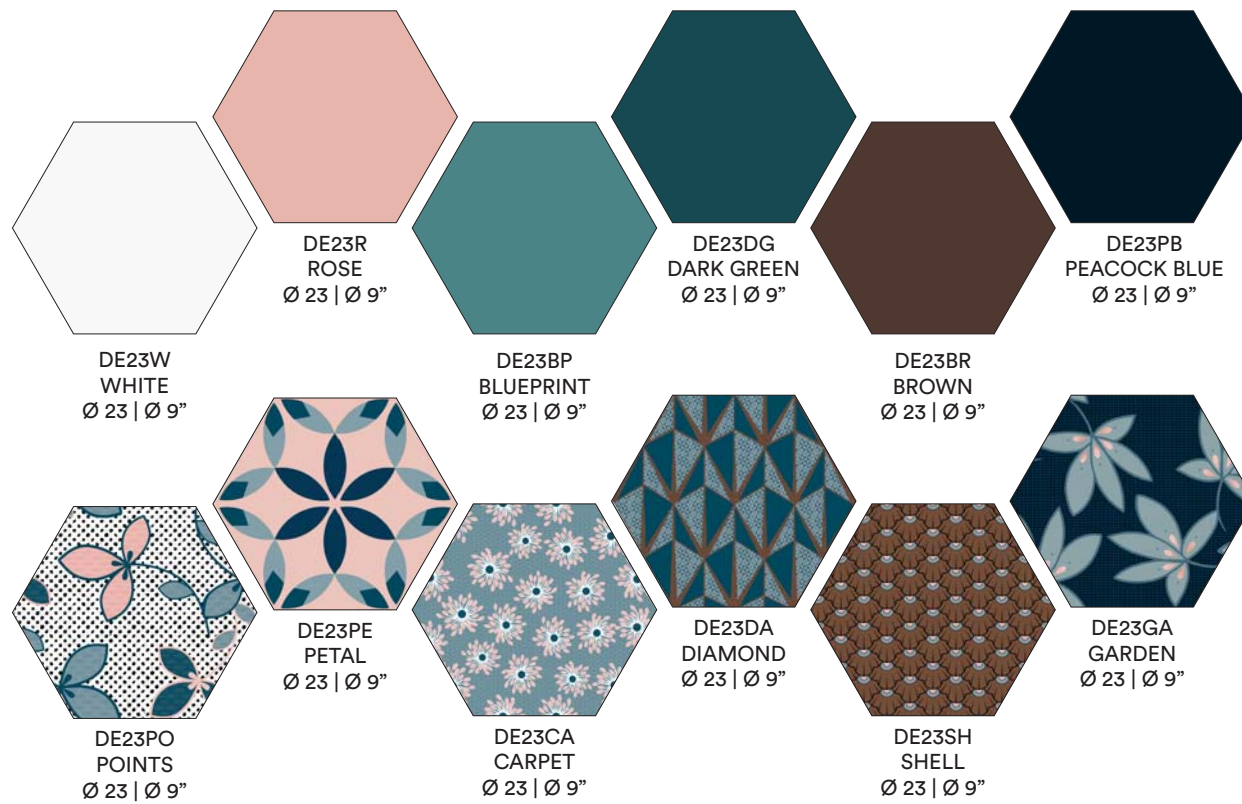
La gamma di colori del momento caratterizza la collezione Décor: dal millennial pink al verde foresta, la palette è formata da colori che si bilanciano perfettamente. Décor si distingue per la sua energia cromatica. Sei tinte unite e impreziosite da una gamma di sei texture declinate in pendent permettono di scegliere il tono che maggiormente si addice alla vostra cifra stilistica.

The range of colors of the moment characterizes the Décor collection: from the millennial pink to the forest green, the palette is formed by perfectly balanced colors. Décor is distinguished by its chromatic energy. Six solid colors embellished with a range of six textures declined in pendent allow you to choose the tone that best suits your style.

© 2019 - ORNAMENTA® All Rights Reserved

# DÉCOR

Ø 23 | Ø 9"

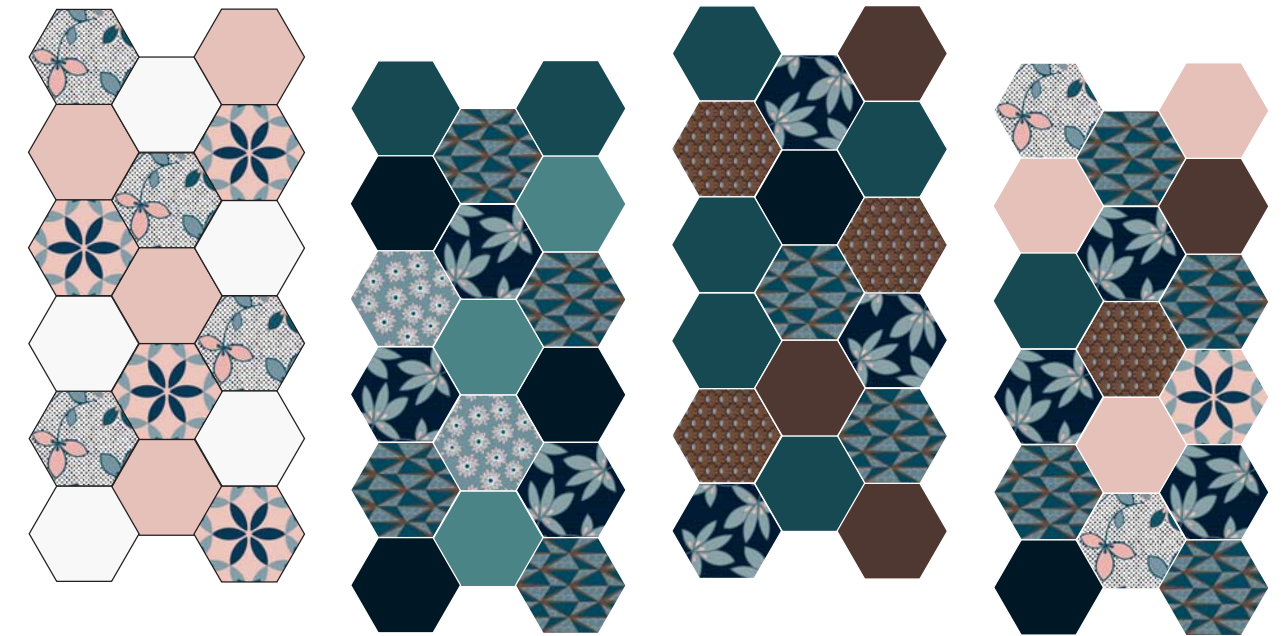


Collezione ceramica di rivestimenti nel formato esagonale di Ø 23 cm in cui il colore torna ad essere assoluto protagonista degli spazi. Molteplici combinazioni per rompere gli schemi.

Ceramic collection of coverings in hexagonal format of Ø 23 cm in which the color returns to be the absolute protagonist of the spaces. Multiple combinations to break the rules.

# LAYOUTS

MIX DÉCOR



MIX WHITE Ø 23 | Ø 9"

MIX GREEN Ø 23 | Ø 9"

MIX BROWN Ø 23 | Ø 9"

MIX MULTICOLOUR Ø 23 | Ø 9"

# INFO TECH

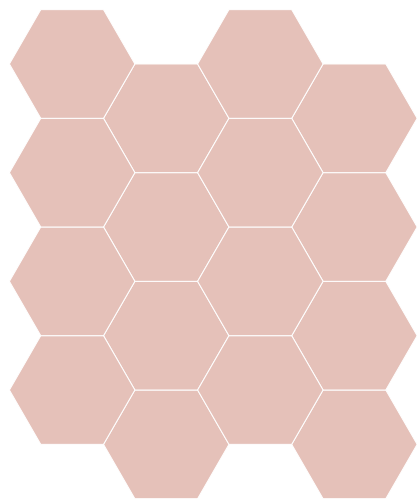
DECORS & TECH.FEATURES

UNI EN14411:2016 App. GL. (Bla Group)

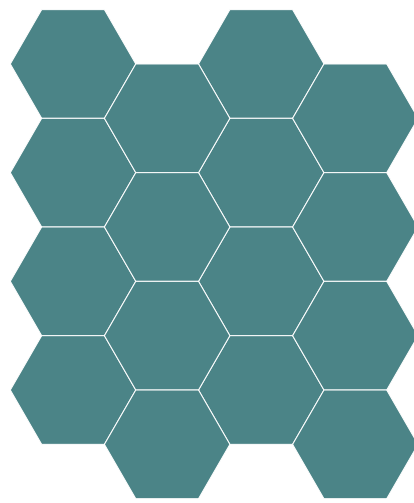
| NORMA STANDARD              | CARATTERISTICHE FEATURES                                       | VALORI LIMITI PREVISTI ESTABLISHED LIMITS   | VALORI RILEVATI MEASURED VALUES         |
|-----------------------------|--|---|---|
| ISO 10545.3<br>ASTM C373    | <b>Assorbimento d'acqua</b><br>Water absorption                | < 0,5%  | < 0,5%                                  |
| ISO 10545.9<br>ASTM C484    | <b>Resistenza agli sbalzi termici</b><br>Thermal shock         | Resistente<br>Resistant   | Resistente<br>Resistant                 |
| ISO 10545.13<br>ASTM C650   | <b>Resistenza agli attacchi chimici</b><br>Chemical resistance | Conforme<br>Complies with the standards   | Conforme<br>Complies with the standards |
| ISO 10545.7<br>ASTM 1027    | <b>Resistenza all'abrasione</b><br>Deep resistance             | 100 PEI 0 / 150 PEI I<br>600 PEI II / 750 - 1500 PEI III<br>2100 - 6000 - 12000 PEI IV<br>> 12000 PEI V | 750 - 1500 PEI III                      |
| ISO 10545.14<br>ASTM CC1378 | <b>Resistenza alle macchie</b><br>Stains Resistance            | ≥ Classe 3<br>≥ Class 3   | ≥ Classe 3<br>≥ Class 3                 |
| ISO 10545.12<br>ASTM C1026  | <b>Resistenza al gelo</b><br>Frost resistant                   | Conforme<br>Complies with the standards   | Conforme<br>Complies with the standards |
| ISO 10545.4                 | <b>Resistenza alla rottura</b><br>Breaking strenght            | ≥ 28 N/mm <sup>2</sup>  | ≥ 28 N/mm <sup>2</sup>                  |

| FORMATO SIZE | PZ-MQ<br>PCS-SQM | PZ-SCAT.<br>PCS-BOX | MQ-SCAT.<br>SQM-BOX | SCAT.-PAL.<br>BOX-PAL. | KG-SCAT.<br>KG-BOX | KG-PAL.<br>KG-PAL. | MQ-PAL.<br>SQMS-PAL. |
|--------------|------------------|---------------------|---------------------|------------------------|--------------------|--------------------|----------------------|
| Ø 23   Ø 9"  | 0,343            | 12                  | 4,116               | 70                     | 7,824              | 547,68             | 288,12               |

LAYOUTS



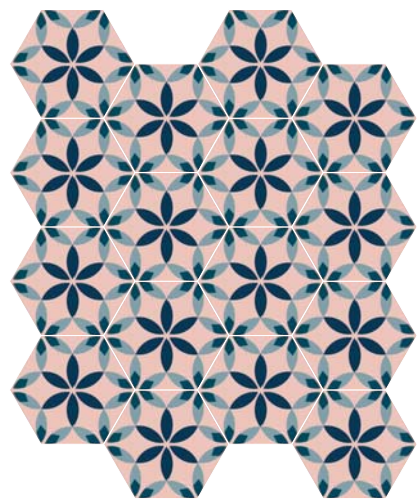
DE23R ROSE Ø 23 | Ø 9"



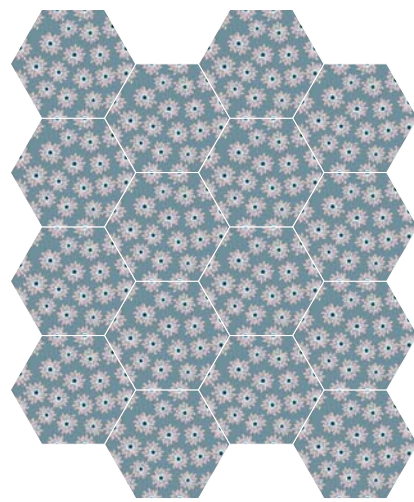
DE23BP BLUEPRINT Ø 23 | Ø 9"



DE23PB PEACOCK BLUE Ø 23 | Ø 9"



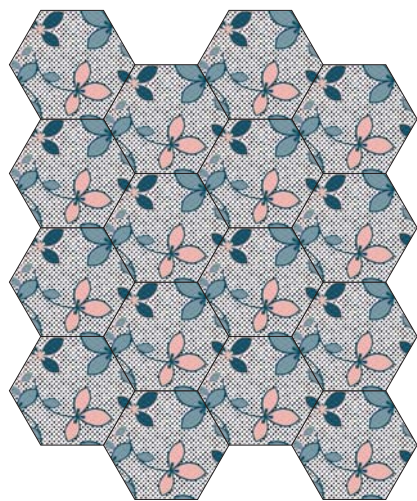
DE23PE PETAL Ø 23 | Ø 9"



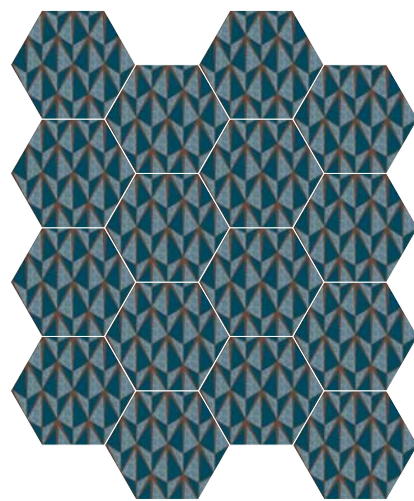
DE23CA CARPET Ø 23 | Ø 9"



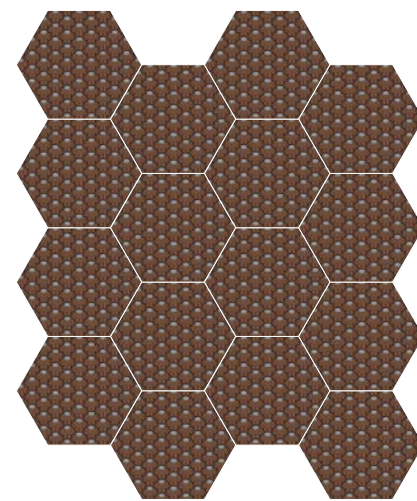
DE23GA GARDEN Ø 23 | Ø 9"



DE23PO POINTS Ø 23 | Ø 9"



DE23DA DIAMOND Ø 23 | Ø 9"



DE23SH SHELL Ø 23 | Ø 9"



SL6060C STILE LIBERO CREAM 60x60 | 24"x24" FLOOR  
DE23CA CARPET Ø 23 | Ø 9" WALL



PT1260T TAUPE, METAL MIX 12x60 | 5"x24" FLOOR

**PTRN**

WHITE MIX  
12x60 | 5"x24"



PT1260W WHITE, MIX WHITE 12x60 | 5"x24" FLOOR

Patterns stampati su legno che vengono poi installati come parquet. Disegni del pavimento basati su ritagli in una gamma di motivi e colori. Declinata in un'unica misura, la collezione è composta da quattro colori naturali e in aggiunta cinque colori decorativi e cinque trame disponibili anche nella realizzazione in bronzo metallico.

Printing patterns on wood that are then installed as parquet. Floor patterns based on offcuts in a range of patterns and colors. Declined in one single size, the collection is composed by four natural colours and in addition five deco colours and five textures too available also in metallic bronze realisation.

# PTTRN

12x60 | 5"x24"



Le combinazioni tra le texture sono molteplici, la scelta riguarda le cromie delle essenze, le trame, i toni, "l'ornamento" diviene superficie total look.

The combinations between the textures are multiple, the choice concerns the colors of the essences, the textures, the tones, the "ornament" becomes the surface total look.



\* 5 GRAFICHE DIFFERENTI / 5 DIFFERENT DESIGNS

## INFO TECH

DECORS & TECH.FEATURES

UNI EN14411:2016 App. GL. (Bla Group)

| NORMA STANDARD              | CARATTERISTICHE FEATURES                                       | VALORI LIMITI PREVISTI ESTABLISHED LIMITS   | VALORI RILEVATI MEASURED VALUES         |  |
|-----------------------------|--|---|---|--|
|                             |  |   | INDUSTRIAL                              | 3F                                     |
| ISO 10545.3<br>ASTM C373    | <b>Assorbimento d'acqua</b><br>Water absorption                | < 0,5%  | ≤ 0,5%                                  |  |
| ISO 10545.9<br>ASTM C484    | <b>Resistenza agli sbalzi termici</b><br>Thermal shock         | Resistente<br>Resistant   | Resistente<br>Resistant                 |  |
| ISO 10545.13<br>ASTM C650   | <b>Resistenza agli attacchi chimici</b><br>Chemical resistance | Conforme<br>Complies with the standards   | Conforme<br>Complies with the standards |  |
| ISO 10545.7<br>ASTM 1027    | <b>Resistenza all'abrasione</b><br>Deep resistance             | 100 PEI 0 / 150 PEI I<br>600 PEI II / 750 - 1500 PEI III<br>2100 - 6000 - 12000 PEI IV<br>> 12000 PEI V | Ebony PEI III<br>Altri colori PEI IV    | white e colour PEI III                 |
| ISO 10545.14<br>ASTM CC1378 | <b>Resistenza alle macchie</b><br>Stains Resistance            | ≥ Classe 3<br>≥ Class 3   | ≥ Classe 5<br>≥ Class 5                 | ≥ Classe 3<br>≥ Class 3                |
| DIN 51130<br>D-COF          | <b>Resistenza allo scivolamento</b><br>Antislip value          | > 0,42  | R10<br>≥ 0,42                           | Bronze R9 Altri R10<br>> 0,42 ( matt ) |
| ISO 10545.12<br>ASTM C1026  | <b>Resistenza al gelo</b><br>Frost resistant                   | Conforme<br>Complies with the standards   | Conforme<br>Complies with the standards |  |
| ISO 10545.4                 | <b>Resistenza alla rottura</b><br>Breaking strenght            | ≥ 28 N/mm <sup>2</sup>  | ≥ 35 N/mm <sup>2</sup>                  | ≥ 28 N/mm <sup>2</sup>                 |

| FORMATO SIZE   | PZ-MQ PCS-SQM | PZ-SCAT. PCS-BOX | MQ-SCAT. SQM-BOX | SCAT.-PAL. BOX-PAL. | KG-SCAT. KG-BOX | KG-PAL. KG-PAL. | MQ-PAL. SQMS-PAL. |
|----------------|---------------|------------------|------------------|---------------------|-----------------|-----------------|-------------------|
| 12x60   5"x24" | 0,864         | 12               | 10,368           | 40                  | 17,76           | 710,40          | 414,72            |

GRAPHIC MOVEMENT



15 GRAFICHE DIFFERENTI / 15 DIFFERENT DESIGNS

| Formato / Size | Numero di grafiche / Number of designs |
|----------------|--|
| 12x60   5"x24" | 30                                     |

LAYOUTS

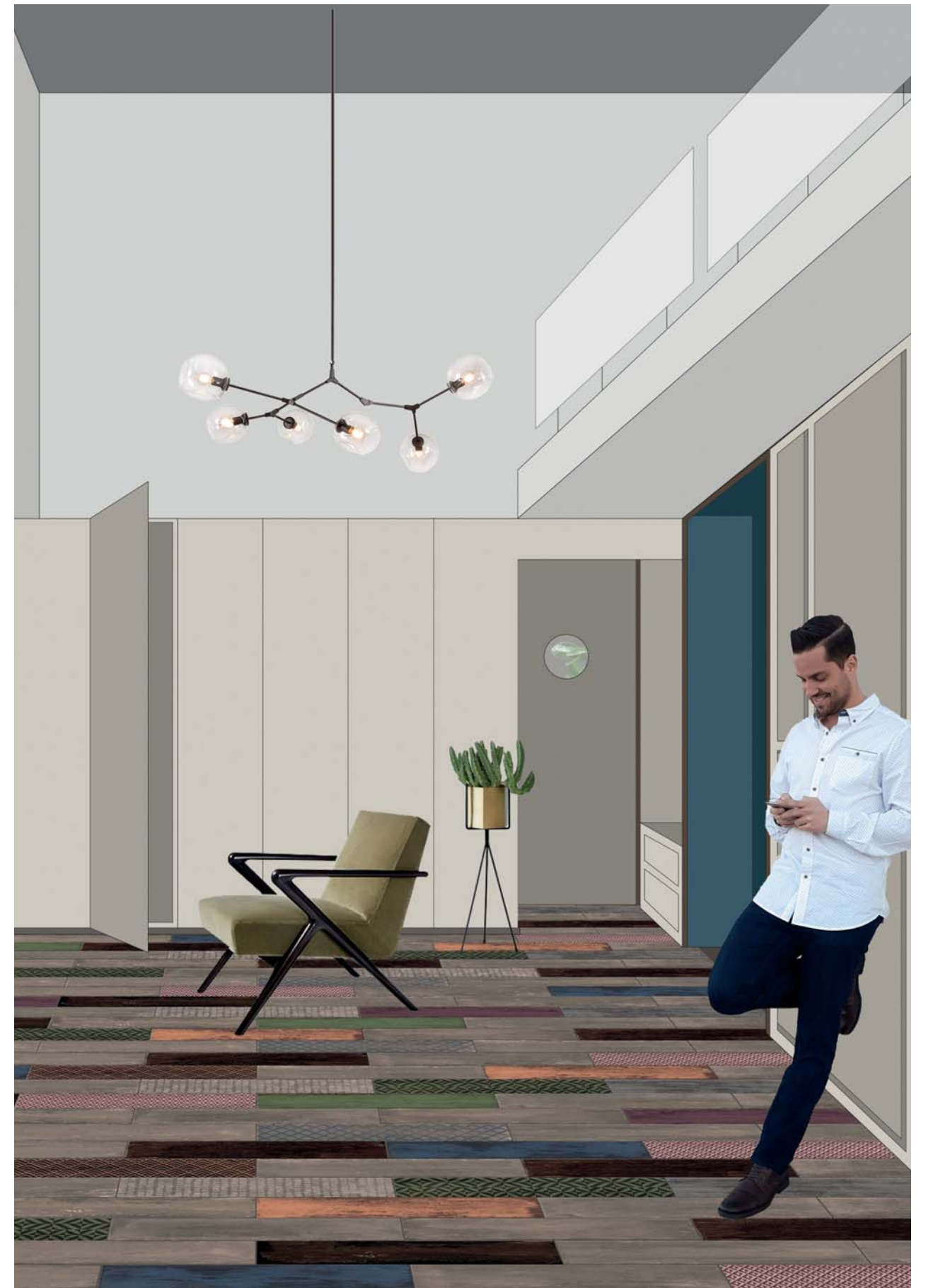
COLOUR MIX



WHITE MIX



METAL MIX



PT1260T TAUPE, COLOR MIX 12x60 | 5"x24" FLOOR

© 2019 - ORNAMENTA® All Rights Reserved





HU11S SAND 7,5x15 | 3"x6", MA N7530PGL PARK GREEN LISCIO 7,5x30 | 3"x12" WALL  
CS6060G GRIS 60x60 | 24"x24" FLOOR

## HUES

SAND  
Ø11 | Ø4"



PT1260T TAUPE 12x60 | 5"x24" FLOOR  
HU11S SAND Ø 11 | Ø 4" WALL

Splendide piastrelle in mattoni e esagonali caratterizzate da uno smalto reagente disponibile in cinque colori e una finitura. Se stai cercando di creare un rivestimento dalla grande personalità, Hues è la collezione che unisce l'essenza stessa della lavorazione artigianale alla moderna tecnologia industriale.

Stunning brick and hexagonal tiles characterized by distinctive glaze available in five colours and one finish. If you are looking to create a wall with personality, Hues is the collection that combines the very essence of craftsmanship with modern industrial technology.

# HUES

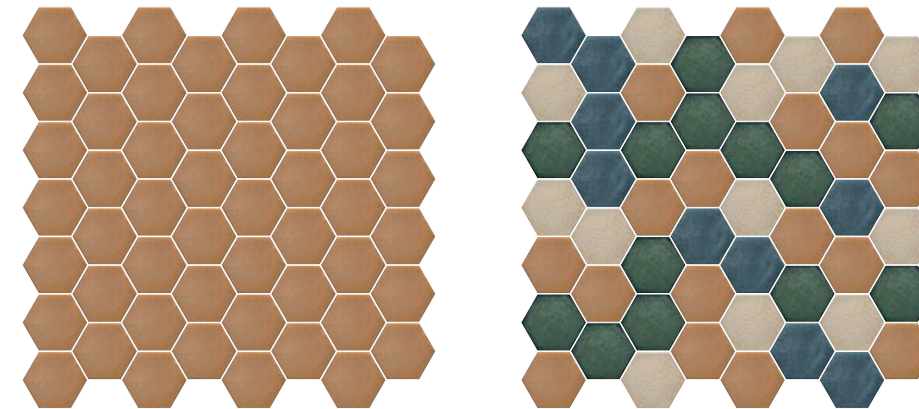
7,5x15 | 3"x6" - Ø 11 | Ø 4"



Le piastrelle presentano un elevato livello di variazione di colore all'interno di ciascun lotto di produzione. Ciò è dovuto agli smalti unici che reagiscono al calore all'interno del forno. Notevoli variazioni di colore e tonalità devono essere considerate come plus del prodotto. Per un utilizzo solo da rivestimento.

Tiles feature a high level of colour variation within each production batch. This is due to the unique glazes reacting to the heat inside the kiln. Notable colour and shade variation must be considered as a plus for the product. For wall use only.

## LAYOUTS



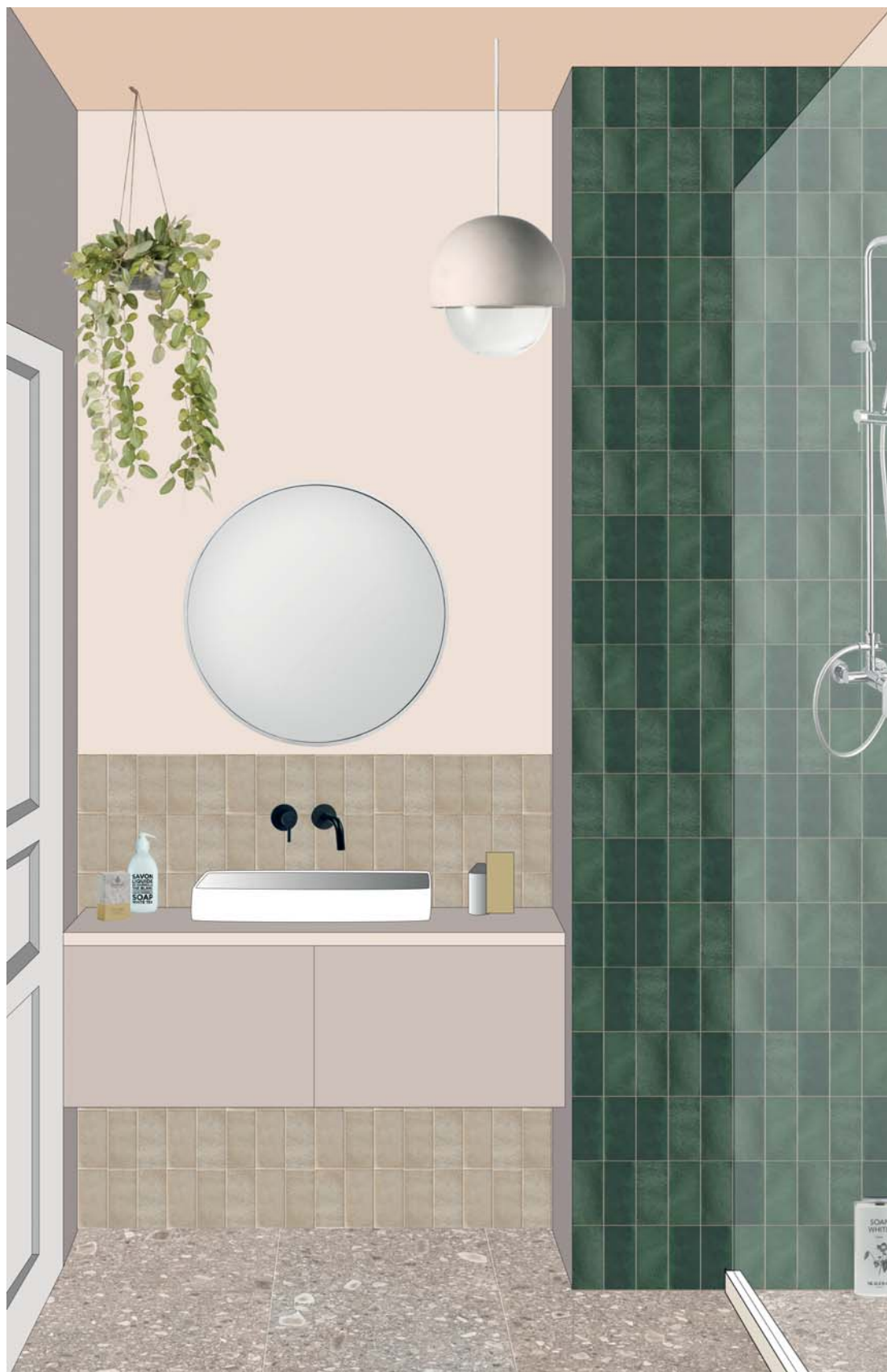
## INFO TECH

DECORS & TECH.FEATURES

### UNI EN14411:2016 App. L. (BIII Group)

| NORMA STANDARD              | CARATTERISTICHE FEATURES                     | VALORI LIMITI PREVISTI ESTABLISHED LIMITS | VALORI RILEVATI MEASURED VALUES |
|-----------------------------|--|---|---------------------------------|
| ISO 10545.3<br>ASTM C373    | Assorbimento d'acqua<br>Water absorption     | > 10%                                     | > 10%                           |
| ISO 10545.14<br>ASTM CC1378 | Resistenza alle macchie<br>Stains Resistance | ≥ Classe 3<br>≥ Class 3                   | ≥ Classe 3<br>≥ Class 3         |

| FORMATO SIZE   | PZ-MQ PCS-SQM | PZ-SCAT. PCS-BOX | MQ-SCAT. SQM-BOX | SCAT.-PAL. BOX-PAL. | KG-SCAT. KG-BOX | KG-PAL. KG-PAL. | MQ-PAL. SQMS-PAL. |
|----------------|---------------|------------------|------------------|---------------------|-----------------|-----------------|-------------------|
| 7,5x15   3"x6" | 0,01125       | 30               | 0,3375           | 161                 | 5,178           | 833,658         | 54,3375           |
| Ø 11   Ø 4"    | 0,078         | 10               | 0,78             | 225                 | 1,47            | 330,75          | 175,5             |



SL6060G STILE LIBERO GRAY 60X60 | 24"X24" FLOOR  
 HU715S SAND 7,5X15 | 3"X6", HU715B BRITISH 7,5X15 | 3"X6" WALL



GO2020RG ROMAN 20x20 | 8"x8" FLOOR  
 HU11C COBALT Ø 11 | Ø 4" WALL

## Credits /

ORNAMENTA®  
News 2019  
© Gamma Due S.p.A.

Via Mosca, 1  
41049 Sassuolo (MO)  
Italy

+39 0536 867411  
info@ornamenta.com  
ornamenta.com

PI/CF: 00831670369

Art Direction:  
D-SEGNO STUDIO  
di Davide Tonelli

via V. Veneto 91/93  
41042 Fiorano Modenese (MO)  
Italy

Davide Tonelli  
+39 348 8744890  
info@d-segno.com  
PI: 02651960359

La diffusione, distribuzione  
e/o copiatura del docu-  
mento trasmesso da parte  
di qualsiasi soggetto diver-  
so dal destinatario è proi-  
bita, sia ai sensi dell'art.  
616 c.p., che ai sensi del  
D.Lgs. n. 196/2003.

The dissemination, distri-  
bution and / or copying of  
the document transmitted  
by any person other than  
the recipient is prohibi-  
ted, both pursuant to art.  
616 c.p., which pursuant  
to Legislative Decree no.  
196/2003.

09.2019

<sup>IT/</sup> Nata come impresa artigiana, creando ceramiche decorative attraverso il processo del terzo fuoco, negli anni si è trasformata in una moderna impresa industriale. Oggi questa azienda è riconosciuta come un punto di riferimento internazionale nel campo delle applicazioni di progettazione ceramica. Dalla pianificazione alla produzione, dalla grafica all'assistenza tecnica, dalla consulenza di marketing alla comunicazione, ogni aspetto di Gamma Due lavora insieme per garantire che vengano soddisfatti i requisiti del cliente. La posizione di prestigio raggiunta da Gamma Due in quaranta anni di attività è il risultato di un ambizioso sforzo imprenditoriale. Uno sforzo ispirato ai principi di eccellenza ed evoluzione permanente. Ornamenta è stata fondata nel 2013 da Davide Tonelli come sub-brand di Gamma Due specializzata nella produzione di superfici decorative, in continua evoluzione. La sua precisa identità si basa sul coraggio di rimanere un passo avanti, di rischiare e sperimentare. Ciò che rende unica questa azienda è la precisa e perfetta coesistenza tra tecnica e artigianalità, solitamente forze opposte che in questo caso sono parallele. Processi industriali all'avanguardia combinati con un'attenta lavorazione per creare collezioni uniche. Passione per la tecnologia e senso per il materiale, professionalità e competenza, libertà creativa e un approccio su misura, profonda sensibilità e tracciabilità assoluta definiscono la forza di Ornamenta.

<sup>ENG/</sup> Born as a craftsman's venture, creating decorative ceramics through the third-fire process, over the years it has transformed into a modern industrial enterprise. Today this business is recognized as an international point of reference in the realm of ceramic design applications. From planning to production, from graphic to technical assistance, from marketing advice to communication, every aspect of Gamma Due works together to ensure that the requirements of the client are met. The position of prestige achieved by Gamma Due in forty years of activity is the result of an ambitious entrepreneurial effort. An effort inspired by the principles of excellence and permanent evolution. Ornamenta was founded in 2013 by Davide Tonelli as sub-brand of Gamma Due specialized in the production of decorative surfaces, in constant evolution. Its precise identity is based on the courage to stay one step ahead, to take risks and experiment. What makes this company unique is the precise, and perfect coexistence between technique and craftsmanship, usually opposing forces that in this case are parallel. Avant-garde industrial processes combine with painstaking workmanship to create unique collections. Passion for technology and a sense for material, professionalism and expertise, creative freedom and a tailor-made approach, deep sensitivity and absolute traceability define the force of Ornamenta.

CERSAIE 2019

ORNAMENTA®  
@ornamentaceramics  
#ornamentanews2019