

MANUFATTO

ORNAMENTA.COM

Ø 23//
6 DESIGNS//
6 PLAIN COLORS//
WHITE BODY//

ORNAMENTA®

ENERGY COLORS

*multiple combinations
to break the rules.*

SUMMARY

COLOURS

pag. 4 | 5

THE COLLECTION

pag. 6 | 15

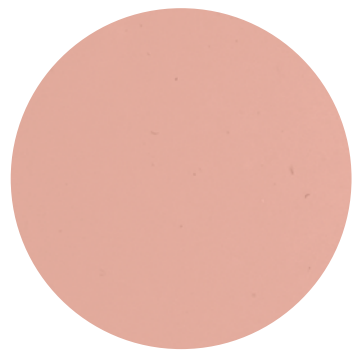
TECHNICAL INFO

pag. 17 | 21

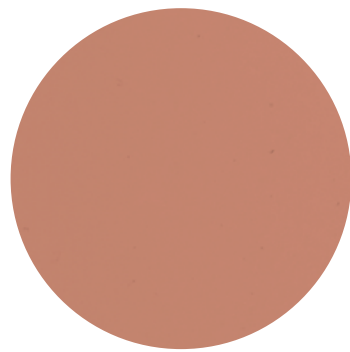
ORNAMENTA.COM



white



blush



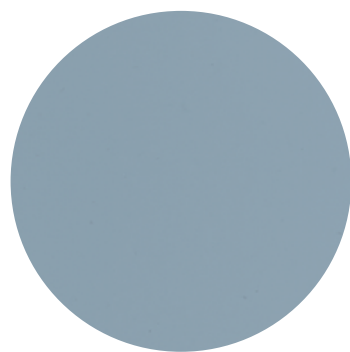
terracotta



greige



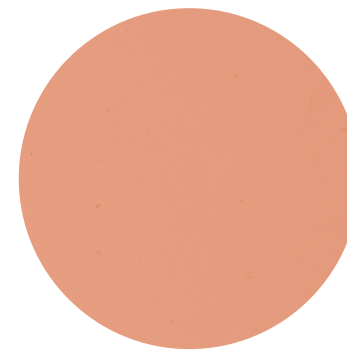
celadon



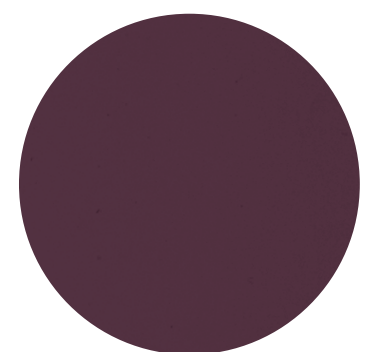
dusty blue



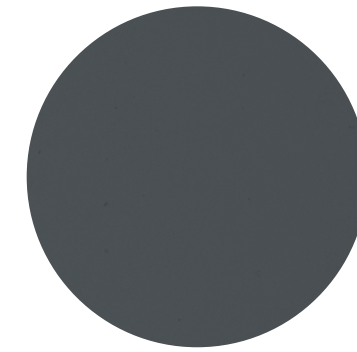
cotton grey



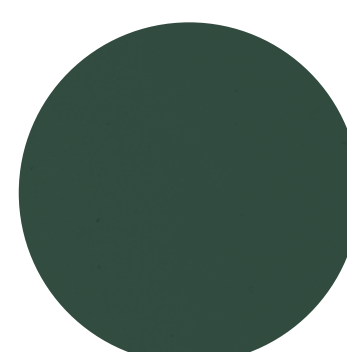
cantaloupe



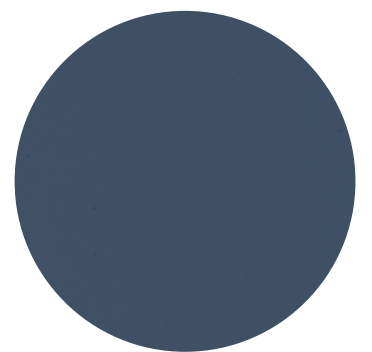
burgundy



ocean storm



park green



blue night

*I colori e le caratteristiche estetiche dei materiali illustrati nel presente catalogo sono da ritenersi puramente indicativi.
Colours and aesthetical features of the materials as illustrated in this catalogue are to be regarded as mere indications.

White

PLAIN

7,5x30 | 3"x12"

Nasce dal bagaglio delle esperienze ceramiche passate di produzione artigianale e le fa proprie in un prodotto riproducibile su larga scala con una ripetizione sequenziale che non ne annulla l'antica forza ma la esalta. È piastrella fatta di materia e colore. Così Manufatto è una collezione che si compone di dodici colori declinati in due forme, liscia e diamantata, per creare infinite possibilità compositive.

Born from the baggage of the past ceramics experiences of artisanal production and makes them his own in a product reproducible on a large scale with a sequential repetition that does not cancel the ancient strength but exalts it. It is a tile made of material and color. So Manufatto is a collection that consists of twelve colors declined in two shapes, smooth and diamond-cut, to create infinite compositional possibilities.



White

DIAMOND

7,5x30 | 3"x12"



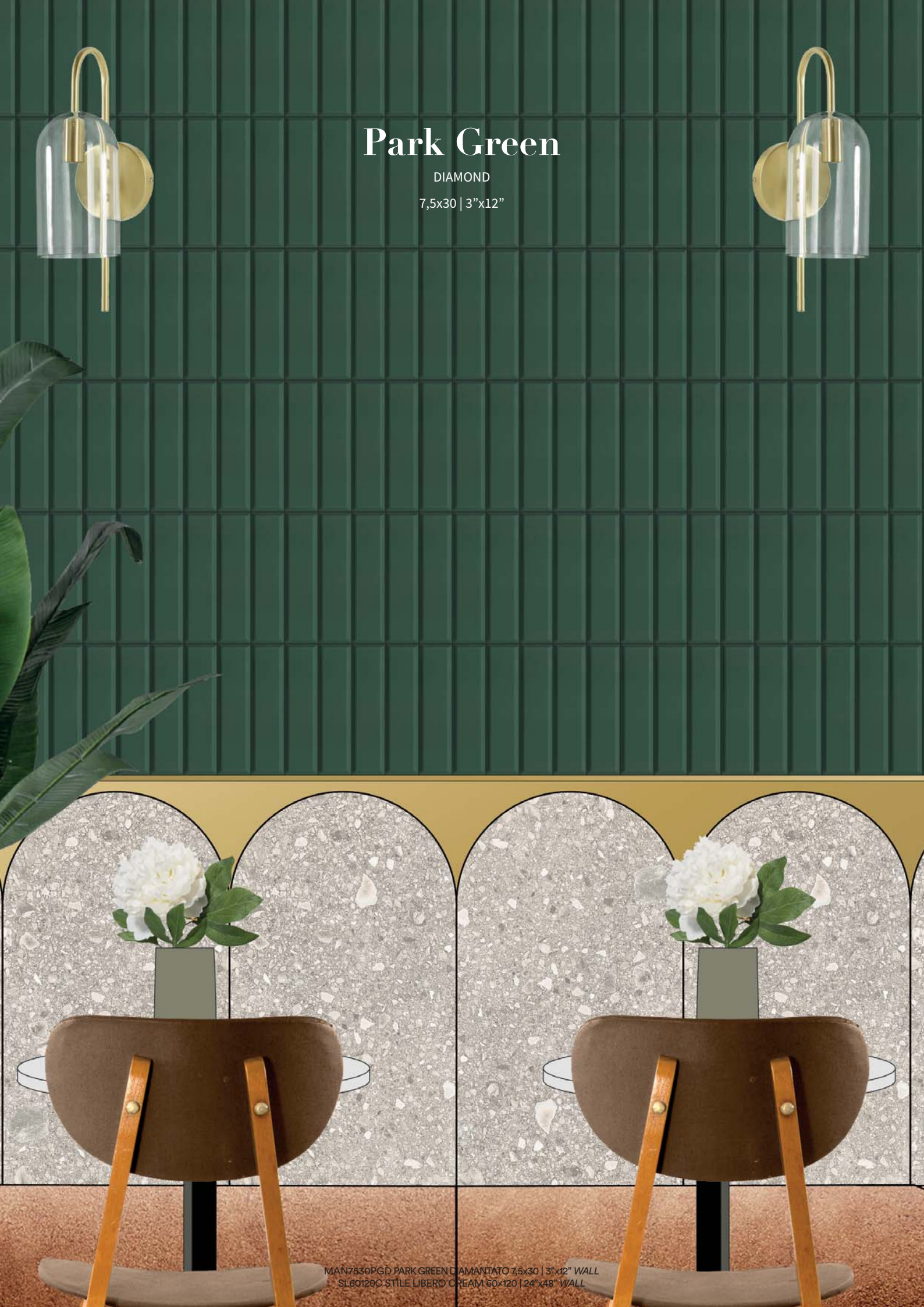
Blush

PLAIN

7,5x30 | 3"x12"

Park Green

DIAMOND
7,5x30 | 3"x12"



MAN7530PGD PARK GREEN DIAMANTATO 7,5x30 | 3"x12" WALL
SL60120C STILE LIBERO CREAM 60x120 | 24"x48" WALL

Cotton Grey

PLAIN
7,5x30 | 3"x12"



TE6060B BLUSH 60x60 | 24"x24" FLOOR
MAN7530CGL COTTON GREY LISCIO 7,5x30 | 3"x12" WALL

Blue Night

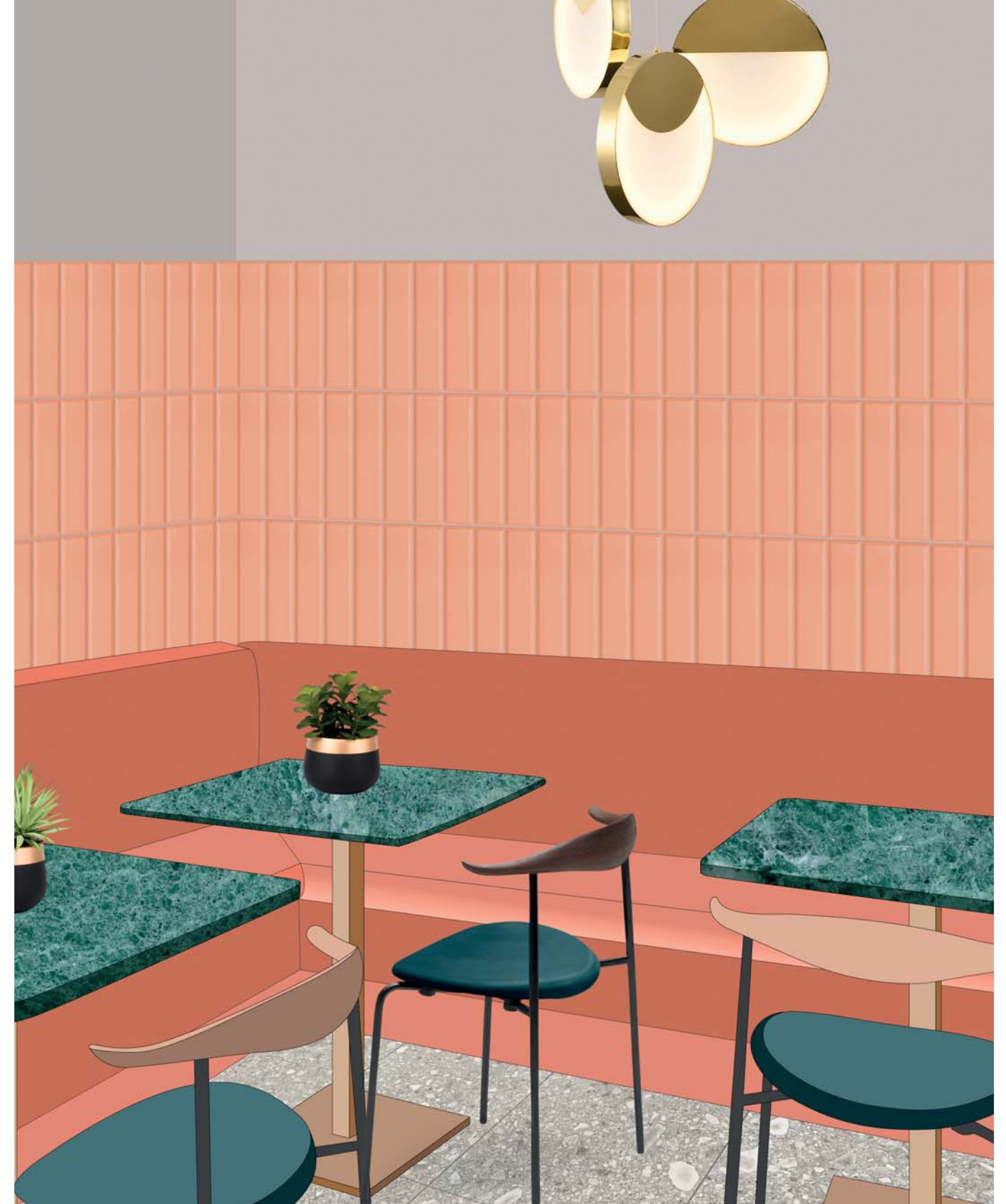
DIAMOND
7,5x30 | 3"x12"



TE6060G GREY 60x60 | 24"x24" FLOOR
MAN7530BND BLUE NIGHT DIAMANTATO 7,5x30 | 3"x12" WALL

Cantaloupe

DIAMOND
7,5x30 | 3"x12"



SL6060C STILE LIBERO CREAM 60x60 | 24"x24" FLOOR
MAN7530CAD CANTALOUPE DIAMANTATO 7,5x30 | 3"x12" WALL



Ocean Storm

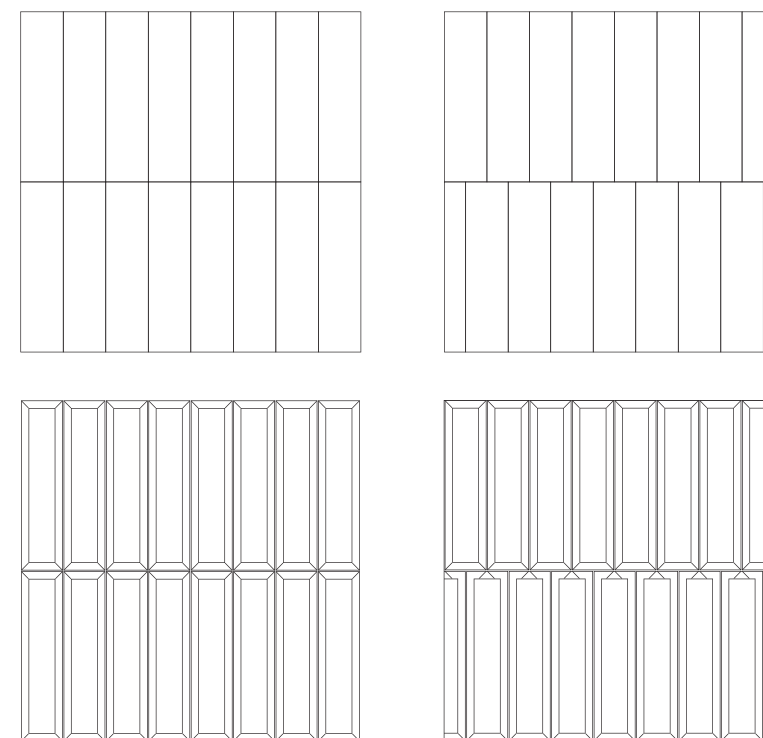
DIAMOND

7,5x30 | 3"x12"

TECHNICAL INFO

| | | |
|--|---|--|
|  |  |  |
| MAN730WL WHITE LISCIO 7,5X30 3"x12" | MAN730BL BLUSH LISCIO 7,5X30 3"x12" | MAN730TL TERRACOTTA LISCIO 7,5X30 3"x12" |
|  |  |  |
| MAN730GL GREIGE LISCIO 7,5X30 3"x12" | MAN730CL CELADON LISCIO 7,5X30 3"x12" | MAN730DBL DUSTY BLUE LISCIO 7,5X30 3"x12" |
|  |  |  |
| MAN7530CAL CANTALOUPE LISCIO 7,5x30 3"x12" | MAN7530CGL COTTON GREY LISCIO 7,5x30 3"x12" | MAN7530PGL PARK GREEN LISCIO 7,5x30 3"x12" |
|  |  |  |
| MAN7530BUL BURGUNDY LISCIO 7,5x30 3"x12" | MAN7530OSL OCEAN STORM LISCIO 7,5x30 3"x12" | MAN7530BNL BLUE NIGHT LISCIO 7,5x30 3"x12" |
|  |  |  |
| MAN730WD WHITE DIAMANTATO 7,5X30 3"x12" | MAN730BD BLUSH DIAMANTATO 7,5X30 3"x12" | MAN730TD TERRACOTTA DIAMANTATO 7,5X30 3"x12" |
|  |  |  |
| MAN730GD GREIGE DIAMANTATO 7,5X30 3"x12" | MAN730CD CELADON DIAMANTATO 7,5X30 3"x12" | MAN730DBD DUSTY BLUE DIAMANTATO 7,5X30 3"x12" |
|  |  |  |
| MAN7530CAD CANTALOUPE DIAMANTATO 7,5x30 3"x12" | MAN7530CGD COTTON GREY DIAMANTATO 7,5x30 3"x12" | MAN7530PGD PARK GREEN DIAMANTATO 7,5x30 3"x12" |
|  |  |  |
| MAN7530BUD BURGUNDY DIAMANTATO 7,5x30 3"x12" | MAN7530OSD OCEAN STORM DIAMANTATO 7,5x30 3"x12" | MAN7530BND BLUE NIGHT DIAMANTATO 7,5x30 3"x12" |

SCHEMI DI POSA / LAYOUT SETTINGS



Si consiglia di posare il prodotto utilizzando un distanziale da 2mm.
We suggest to lay the product by using a spacer of 2mm.

MISURE E PESI

weight and dimensions

poids et dimensions

größe und gewichte

medidas y pesos

| Dimensione | | | |
|-----------------------------|-----------|--------------|--|
| Size | 7,5x30 | 7,5x30 | |
| Format | 3”x12” | 3”x12” | |
| Format | (liscio) | (diamantato) | |
| Tamaño | | | |
| Spessore | | | |
| Thickness | | | |
| Épaisseur | 7 mm | 7 mm | |
| Stärke | | | |
| Espesor | | | |
| Peso | | | |
| Weight | | | |
| Poids | 0,32 kg | 0,38 kg | |
| Gewicht | | | |
| Peso | | | |
| Pezzi per scatola | | | |
| Pieces per carton | | | |
| Pièces par carton | 22 | 18 | |
| Stück pro Karton | | | |
| Unidades por caja | | | |
| Quantità per scatola | | | |
| Quantity per carton | | | |
| Quantité par carton | 0,495 sqm | 0,405 sqm | |
| Quantität pro Karton | | | |
| Cantidad por caja | | | |
| Peso per scatola | | | |
| Weight per carton | | | |
| Poids par carton | 7,137 kg | 6,847kg | |
| Gewicht pro Karton | | | |
| Peso por caja | | | |
| Scatole per paletta | | | |
| Boxes per pallet | | | |
| Cartons par palette | 132 | 132 | |
| Karton pro palette | | | |
| Cajas por paleta | | | |
| Quantità per paletta | | | |
| Quantity per pallet | | | |
| Quantité par palette | 65,34 sqm | 53,46 sqm | |
| Quantität pro palette | | | |
| Cantidad por paleta | | | |
| Peso per paletta | | | |
| Weight per pallet | | | |
| Poids par palette | 962 kg | 923,8 kg | |
| Gewicht pro palette | | | |
| Peso por paleta | | | |

| Giunto | | Stucchi | | Grado di variazione cromatica | |
|---------------|------|-------------------|---|--------------------------------------|-------------|
| Joint | | Grouts | 103 Bianco Luna - Moon White | Colour shade variation | ASTM C137.1 |
| Joint | 2 mm | Joints | 141 Caramel -Caramel | Degré de variation chromatique | V0 - V4 |
| Fugenbreite | | Fugenmassen | 143 Terracotta | Grad Der Farbabweichung | V01 |
| Junta | | Pasta de rejuntar | 136 Fango - Mud | Grado De Variación Cromatica | |
| | | | 182 Tormalina-Tourmaline | | |
| | | | 170 Celeste Crocus - Crocus Blue | | |

Avvertenze

Non saranno accolte contestazioni per danni visibili prima della posa. I colori dei materiali illustrati nel presente catalogo sono da ritenersi puramente indicativi. I dati presenti nella tabella “Misure e Pesi” sono aggiornati al momento della stampa del catalogo, pertanto i dati elencati possono subire variazioni.

Advice

Claims on items which have already been laid will not be accepted for any damage visible before laying. Colours of the materials as illustrated in this catalogue are to be regarded as mere indications. The details present in the table “Weight and Dimensions” are updated at the time the catalogue is printed, therefore the datas may change.

Avertissements

Ils ne seront pas acceptées les réclamations pour dommages visibles avant l’installation. Les couleurs des matériaux illustrés dans ce catalogue sont purement indicatives. Les données dans le tableau «poids et mesures» est correcte au moment de l’impression du catalogue, pourquoi les données peuvent être modifiées.

Warnungen

Sie werden nicht vor der Installation akzeptiert Ansprüche auf sichtbare Beschädigungen werden. Die Farben der Materialien, die in diesem Katalog dargestellt sind rein indikativ. Die Daten in der Tabelle “Maße und Gewichte” ist korrekt zum Zeitpunkt der Druck des Katalogs, deshalb werden die aufgelisteten Daten geändert werden können.

Advertencias

No se aceptarán reclamaciones por daños visibles antes de la instalación. Los colores de los materiales descritos en este catálogo son meramente indicativos. Los datos de los “Pesos y Medidas” tabla es correcta en el momento de imprimir el catálogo, por lo tanto, los datos enumerados pueden ser alterados.

CARATTERISTICHE TECNICHE

technical features

caractéristiques techniques

technische eigenschaften

características técnicas

| | NORMA STANDARD | VALORI LIMITI PREVISTI ESTABLISHED LIMITS VALEURS LIMITES PRÉVUES VORGESEHENE GRENZWERTE VALORES LIMITE PREVISTOS | VALORI RILEVATI MEASURED VALUES VALEURS MESUREES MESSWERTE VALOR MEDIDO |
|---|-----------------------------|--|--|
| Lunghezza e larghezza Lenght and width Longueur et largeur Länge und Breite Longitud y anchura | ISO 10545.2 | ± 0,6% | ± 0,6% |
| Rettilineità degli spigoli Straightness of sides Rectitude des arêtes Geradlinigkeit der Kanten Rectitud de los cantos | ISO 10545.2 | ± 0,5% | ± 0,5% |
| Planarità Flatness Planéité Ebenflächigkeit Planeidad | ISO 10545.2 | ± 0,5% | ± 0,5% |
| Assorbimento d’acqua Water absorption Absorption d’eau Wasseraufnahme Absorción de agua | ISO 10545.3 ASTM C373 | > 10% | > 10% |
| Resistenza agli sbalzi termici Thermal shock Choc thermique Thermoschock Choque termal | ISO 10545.9 ASTM C484 | Resistente Resistant Résistant Beständig Resistente | Resistente Resistant Résistant Beständig Resistente |
| Resistenza agli attacchi chimici Chemical resistance Résistance chimique Chemische Resistenz Resistencia química | ISO 10545.13 ASTM C650 | Conforme Complies with the standards Conforme aux normes Anforderungenerf erfüllt Conforme con las normas | Conforme Complies with the standards Conforme aux normes Anforderungenerf erfüllt Conforme con las normas |
| Resistenza alle macchie Stains Resistance Résistance aux taches Fleckenbeständigkeit Resistencia a las manchas | ISO 10545.14 ASTM CC1378 | ≥ Classe 3 ≥ Class 3 ≥ Classe 3 ≥ Klasse 3 ≥ Categoria 3 | Classe 5 Class 5 Classe 5 Klasse 5 Categoria 5 |
| Resistenza al gelo Frost resistant Résistant au gel Frostbeständig Resistente a las heladas | ISO 10545.12 ASTM C1026 | Conforme Complies with the standards Conforme aux normes Anforderungenerf erfüllt Conforme con las normas | Conforme Complies with the standards Conforme aux normes Anforderungenerf erfüllt Conforme con las normas |
| Resistenza alla rottura Breaking strenght Résistance à la rupture Biegezugfestigkeit Resistencia a flexión | ISO 10545.4 | ≥ 28 N/mm ² | Conforme Complies with the standards Conforme aux normes Anforderungenerf erfüllt Conforme con las normas |

ORNAMENTA®

A.D. Davide Tonelli

Art direction

D-SEGNO STUDIO

Via V. Veneto 91/93,
41042 Fiorano (MO) - Italy
info@d-segno.com
+39 348 8744890

Company

ORNAMENTA® Headquarter
Via Mosca, 1 - 41049
Sassuolo - (MO) Italia
T. +39 0536 867411
F. +39 0536 803937
info@ornamenta.com
IT 00831670369
Gamma Due S.p.A.

ORNAMENTA® Production unit
via Stradone Secchia 29,
42014 Roteglia - (RE) Italia
T. +39 0536 867411

Communication & Pr.

ORNAMENTA Press Office
press@ornamenta.com

ornamenta.com

@ornamentaceramics