

# OPLUS<sup>+</sup>

ORNAMENTA.COM

CAPRICIOUS ARRAY  
OF “+” SIGNS  
100X100 //  
SLIM LAMINATED  
GRES PORCELAIN //

ORNAMENTA<sup>®</sup>

**DESIGN IN LARGE SIZE**

*new forms of positivism*

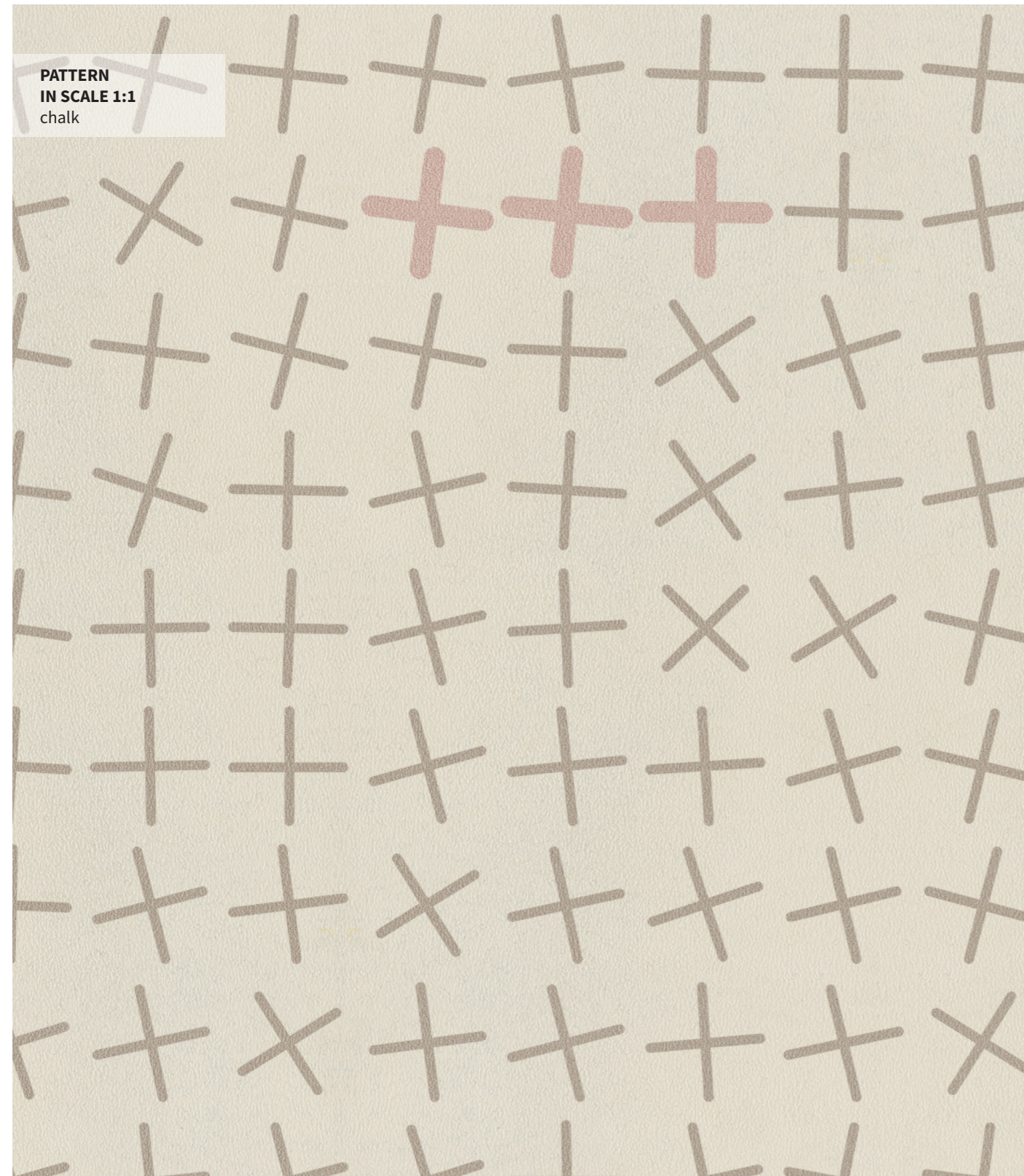
Il concept OPLUS+ rappresenta una maglia regolare di segni che definiscono, nel loro insieme, una texture "a mosaico". La semantica che compone la texture è originata "in negativo" dalla ri-definizione delle fughe tradizionalmente presenti tra le tessere e sintetizzata in un "array capriccioso" di segni "+". Infatti seppur la griglia

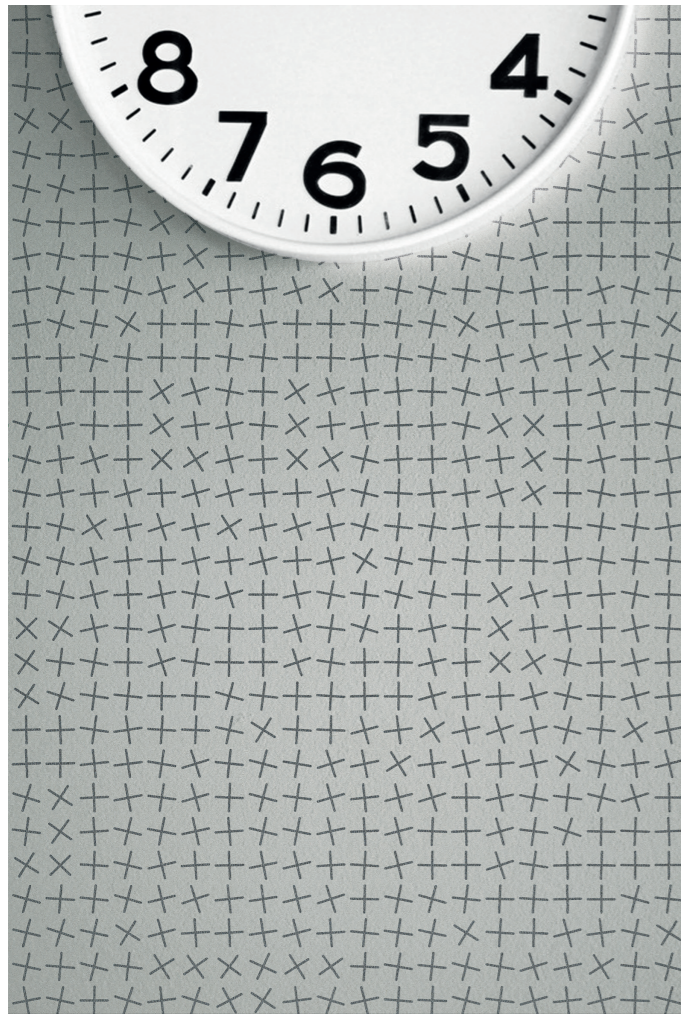
si presenti regolare, i singoli segni che la compongono sono ruotati rispetto al loro centro con angoli differenti, come se l'intera composizione avesse subito un "flicker". In alcuni, pochissimi casi, i segni "+" sono evidenziati con una colorazione in contrasto, quasi a determinare una costellazione di piccoli punti di riferimento che conferiscono

all'intera texture un pizzico di vivacità.

*The OPLUS+ concept represents a regular stitch of signs that define, in their ensemble, a "mosaic" texture. The semantic composing the texture is originated "in negative" from the re-definition of traditionally present joints among the tesserae and synthesized in a capricious*

*array of "+" signs. Actually, even if the grid looks regular, the single signs composing it are turned with different angles in comparison with their centre, like as the entire composition got a "flicker". In some rare cases, the "+" signs are pointed out with a contrast coloration, almost determining a constellation of little points of reference, that give the entire texture a little bit of vivacity.*

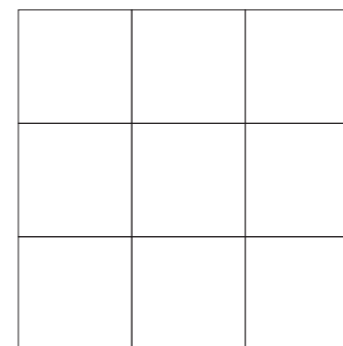




**CODICI / CODES**

OP100100CH CHALK 100x100   40"x40"	OP100100CH CHALK 100x100   40"x40"	OP100100CH CHALK 100x100   40"x40"	OP100100ST SIMPLY TAUPE 100x100   40"x40"	OP100100ST SIMPLY TAUPE 100x100   40"x40"	OP100100ST SIMPLY TAUPE 100x100   40"x40"
OP100100P PEANUT 100x100   40"x40"	OP100100P PEANUT 100x100   40"x40"	OP100100P PEANUT 100x100   40"x40"	OP100100C CAROB 100x100   40"x40"	OP100100C CAROB 100x100   40"x40"	OP100100C CAROB 100x100   40"x40"
OP100100CL CLOUD 100x100   40"x40"	OP100100CL CLOUD 100x100   40"x40"	OP100100CL CLOUD 100x100   40"x40"	OP100100S SMOKE 100x100   40"x40"	OP100100S SMOKE 100x100   40"x40"	OP100100S SMOKE 100x100   40"x40"

**SCHEMI DI POSA / LAYOUT SETTINGS**



Si consiglia di posare il prodotto utilizzando un distanziale da 2mm.  
We suggest to lay the product by using a spacer of 2mm.

## MISURE E PESI

weight and dimensions

poids et dimensions

größe und gewichte

medidas y pesos

<b>Dimensione</b>		
Size	100x100	
Format	40”x40”	
Format		
Tamaño		
<b>Spessore</b>		
Thickness	3 mm	
Épaisseur	3,5 mm (with a sheet of fiberglass)	
Stärke		
Espesor		
<b>Peso</b>		
Weight	8 kg	
Poids		
Gewicht		
Peso		
<b>Pezzi per scatola</b>		
Pieces per carton	3	
Pièces par carton		
Stück pro Karton		
Unidades por caja		
<b>Quantità per scatola</b>		
Quantity per carton	3 sqm	
Quantité par carton		
Quantität pro Karton		
Cantidad por caja		
<b>Peso per scatola</b>		
Weight per carton	24,1 kg	
Poids par carton		
Gewicht pro Karton		
Peso por caja		
<b>Scatole per paletta</b>		
Boxes per pallet	25	
Cartons par palette		
Karton pro palette		
Cajas por paleta		
<b>Quantità per paletta</b>		
Quantity per pallet	75 sqm	
Quantité par palette		
Quantität pro palette		
Cantidad por paleta		
<b>Peso per paletta</b>		
Weight per pallet	602,5 kg	
Poids par palette		
Gewicht pro palette		
Peso por paleta		

		<b>100</b> Bianco - White		
<b>Giunto</b>		<b>110</b> Manhattan 2000 - Manhattan	<b>Grado di variazione cromatica</b>	
Joint		Grouts	Colour shade variation	ASTM C137.1
Joint	2 mm	Joints	Degré de variation chromatique	V0 - V4
Fugenbreite		Fugenmassen	Grad Der Farbabweichung	<b>V01</b>
Junta		Pasta de rejuntar	Grado De Variación Cromatica	
		<b>111</b> Grigio Argento - Silver Grey		
		<b>133</b> Sabbia - Sand		
		<b>114</b> Antracite - Anthracite		

#### Avvertenze

Non saranno accolte contestazioni per danni visibili prima della posa. I colori dei materiali illustrati nel presente catalogo sono da ritenersi puramente indicativi. I dati presenti nella tabella “Misure e Pesi” sono aggiornati al momento della stampa del catalogo, pertanto i dati elencati possono subire variazioni.

#### Advice

Claims on items which have already been laid will not be accepted for any damage visible before laying. Colours of the materials as illustrated in this catalogue are to be regarded as mere indications. The details present in the table “Weight and Dimensions” are updated at the time the catalogue is printed, therefore the datas may change.

#### Avertissements

Ils ne seront pas acceptées les réclamations pour dommages visibles avant l’installation. Les couleurs des matériaux illustrés dans ce catalogue sont purement indicatives. Les données dans le tableau «poids et mesures» est correcte au moment de l’impression du catalogue, pourquoi les données peuvent être modifiées.

#### Warnungen

Sie werden nicht vor der Installation akzeptiert Ansprüche auf sichtbare Beschädigungen werden. Die Farben der Materialien, die in diesem Katalog dargestellt sind rein indikativ. Die Daten in der Tabelle “Maße und Gewichte” ist korrekt zum Zeitpunkt der Druck des Katalogs, deshalb werden die aufgelisteten Daten geändert werden können.

#### Advertencias

No se aceptarán reclamaciones por daños visibles antes de la instalación. Los colores de los materiales descritos en este catálogo son meramente indicativos. Los datos de los “Pesos y Medidas” tabla es correcta en el momento de imprimir el catálogo, por lo tanto, los datos enumerados pueden ser alterados.

## CARATTERISTICHE TECNICHE

technical features

caractéristiques techniques

technische eigenschaften

características técnicas

	NORMA STANDARD	VALORI LIMITI PREVISTI ESTABLISHED LIMITS VALEURS LIMITES PRÉVUES VORGESEHENE GRENZWERTE VALORES LIMITE PREVISTOS	VALORI RILEVATI MEASURED VALUES VALEURS MESUREES MESSWERTE VALOR MEDIDO
<b>Lunghezza e larghezza</b> Lenght and width Longueur et largeur Länge und Breite Longitud y anchura	ISO 10545.2	± 0,6%	± 0,6%
<b>Rettilineità degli spigoli</b> Straightness of sides Rectitude des arêtes Geradlinigkeit der Kanten Rectitud de los cantos	ISO 10545.2	± 0,5%	± 0,2%
<b>Planarità</b> Flatness Planéité Ebenflächigkeit Planeidad	ISO 10545.2	± 0,5%	± 0,5%
<b>Assorbimento d’acqua</b> Water absorption Absorption d’eau Wasseraufnahme Absorción de agua	ISO 10545.3 ASTM C373	< 0,5%	< 0,5%
<b>Resistenza agli sbalzi termici</b> Thermal shock Choc thermique Thermoschock Choque termal	ISO 10545.9 ASTM C484	<b>Resistente</b> Resistant Résistant Beständig Resistente	<b>Resistente</b> Resistant Résistant Beständig Resistente
<b>Resistenza agli attacchi chimici</b> Chemical resistance Résistance chimique Chemische Resistenz Resistencia química	ISO 10545.13 ASTM C650	<b>Conforme</b> Complies with the standards Conforme aux normes Anforderungenerf erfüllt Conforme con las normas	<b>Conforme</b> Complies with the standards Conforme aux normes Anforderungenerf erfüllt Conforme con las normas
<b>Resistenza all’abrasione</b> Deep resistance Résistance à l’abrasion Abriebfestigkeit Resistencia a la abrasión	ISO 10545.7 ASTM 1027	100 PEI 0 150 PEI I 600 PEI II 750 - 1500 PEI III 2100 - 6000 - 12000 PEI IV > 12000 PEI V	PEI III
<b>Resistenza alle macchie</b> Stains Resistance Résistance aux taches Fleckenbeständigkeit Resistencia a las manchas	ISO 10545.14 ASTM CC1378	<b>≥ Classe 3</b> ≥ Class 3 ≥ Classe 3 ≥ Klasse 3 ≥ Categoria 3	<b>Classe 5</b> Class 5 Classe 5 Klasse 5 Categoria 5
<b>Resistenza allo scivolamento</b> Antislip value Résistance au glissement Rutschhemmung Resistencia al deslizamiento	DIN 51130	<b>da R9 a R10</b> from R9 to R10 de R9 à R10 von R9 bis R10 de R9 a R10	R9
	D-COF	≥ 0,42	≥ 0,52
<b>Resistenza al gelo</b> Frost resistant Résistant au gel Frostbeständig Resistente a las heladas	ISO 10545.12 ASTM C1026	<b>Conforme</b> Complies with the standards Conforme aux normes Anforderungenerf erfüllt Conforme con las normas	<b>Conforme</b> Complies with the standards Conforme aux normes Anforderungenerf erfüllt Conforme con las normas
<b>Resistenza alla rottura</b> Breaking strenght Résistance à la rupture Biegezugfestigkeit Resistencia a flexión	ISO 10545.4	≥ 28 N/mm <sup>2</sup>	≥ 35 N/mm <sup>2</sup>

## OPLUS<sup>+</sup>

# ORNAMENTA®

A.D. Davide Tonelli

## Art direction

d-segno studio  
di davide Tonelli  
d.tonelli@d-segno.com  
linkedin.com/in/davidetonelli/

## Company

ORNAMENTA® Headquarter  
Via Mosca, 1 - 41049  
Sassuolo - (MO) Italia  
T. +39 0536 867411  
F. +39 0536 803937  
info@ornamenta.com  
IT 00831670369  
Gamma Due S.p.A.

ORNAMENTA® Production unit  
via Stradone Secchia 29,  
42014 Roteglia - (RE) Italia  
T. +39 0536 867411

## Communication & Pr.

ORNAMENTA Press Office  
press@ornamenta.com

[ornamenta.com](http://ornamenta.com)

@ornamentaceramics